



Vegas

D700

Vegas

This guide shows you how to set up the D700 in Vegas. All pictures provided were taken with Vegas 20 but it is also applicable to most other Vegas versions.

All files mentioned in this guide can be found on the USB drive, in the Asparion Configurator installation folder or on our website.

If you are having trouble with anything in this guide, please contact us via our website www.asparion.de/contact and we'll immediately help you.

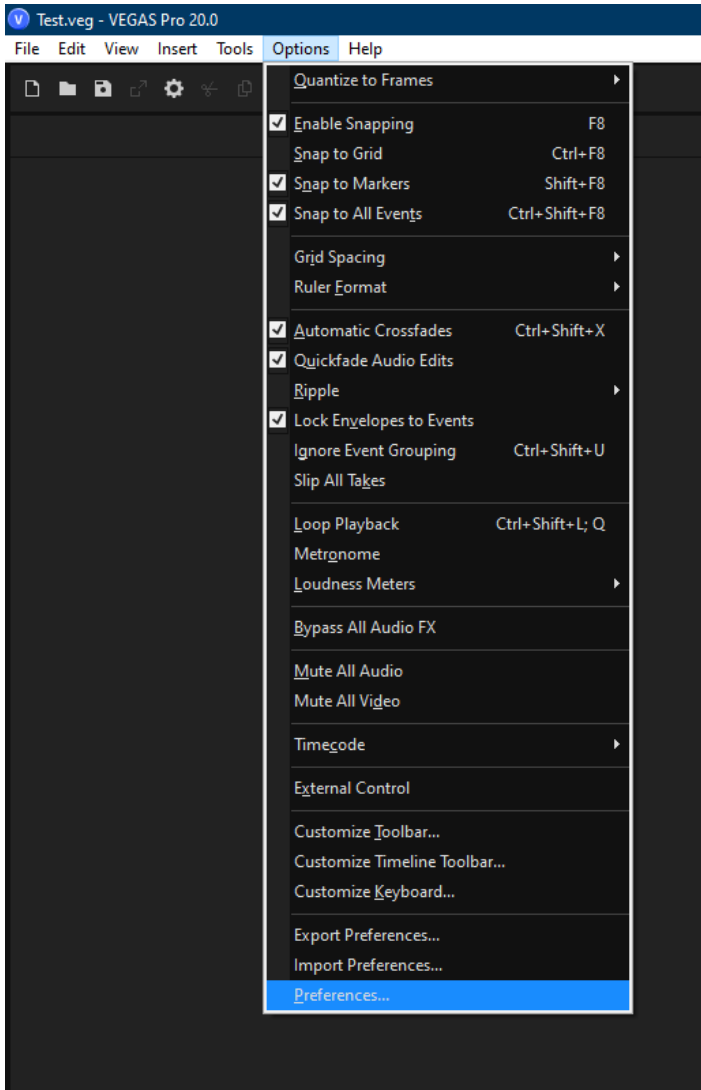
Step 1:

- Select the Vegas preset

How to select a preset is described in the main manual.

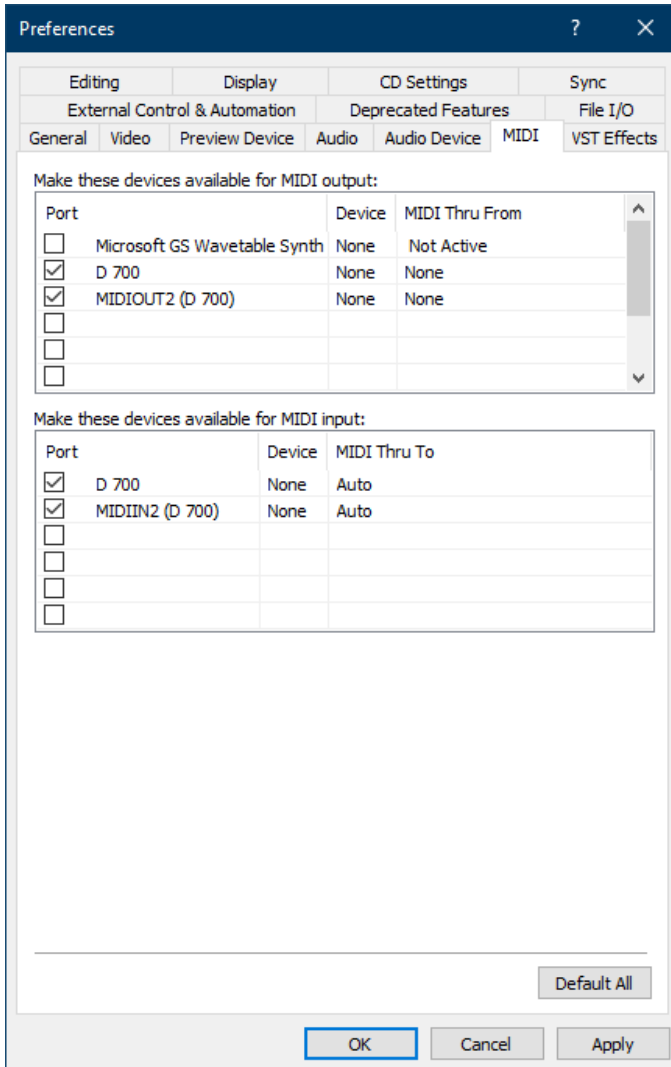
Step 2:

- Open Vegas
- Click on **Options->Preferences...**



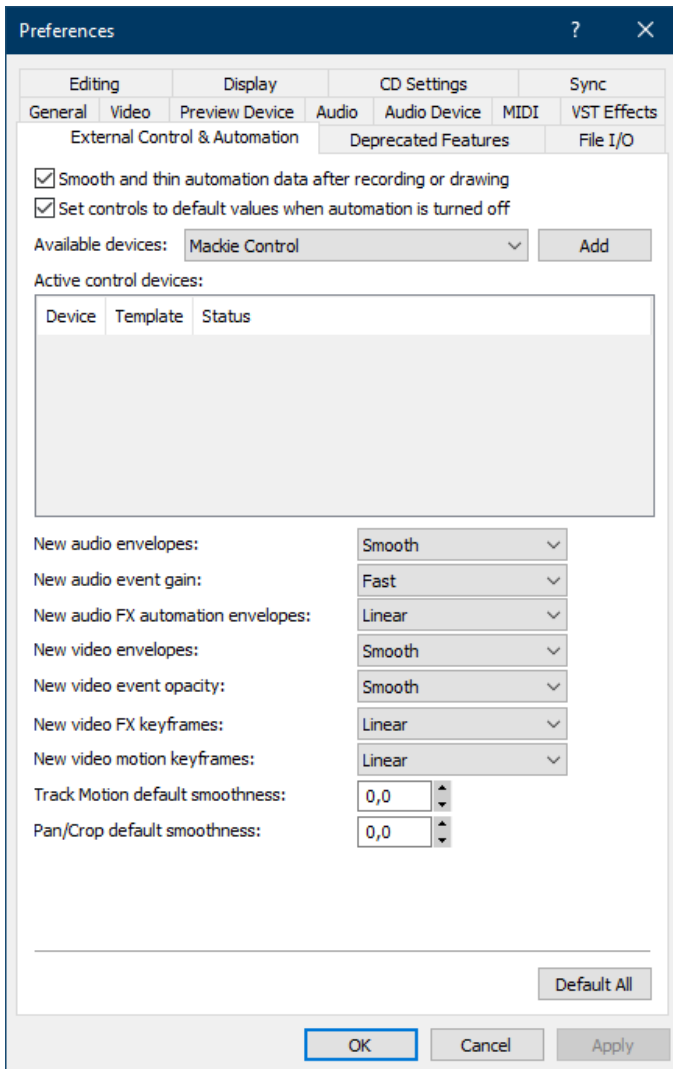
Step 3:

- Go to **MIDI**
- Check all devices containing **D700**
- Press **Apply**



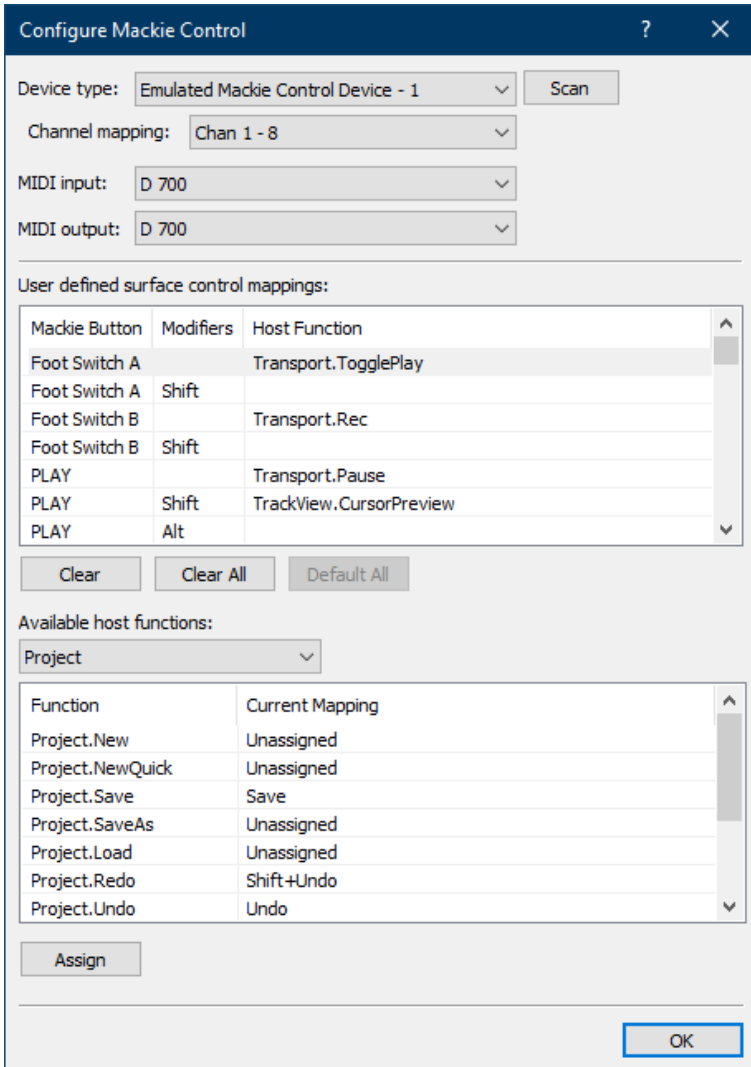
Step 4:

- Go to **External Control & Automation**
- Press **Add**



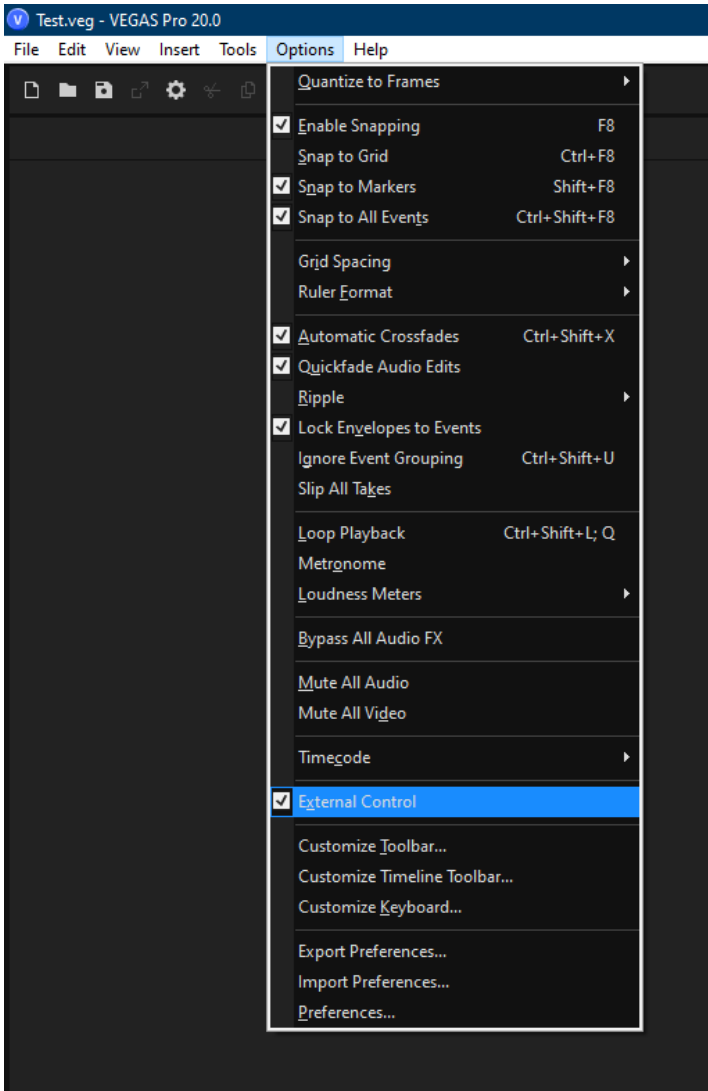
Step 5:

- Click **Add Emulated Mackie Control Device** in the list
- Select **Emulated Mackie Control Device**
- Select **D700** as input and output



Step 6:

- Check **External Control** as shown below



Step 7: (optional)

- If you want to connect more than one extension, you should redo step 3 and 5 but select **D700 (2)** and **Emulated Mackie Extender**

If there is only one D700 showing up, you need to enable the extensions first. How you can do that is described in the main manual.

Configure Mackie Control
?
×

Device type: Emulated Mackie Extender - 1 Scan

Channel mapping: Chan 9 - 16

MIDI input: MIDIIN2 (D 700)

MIDI output: MIDIOUT2 (D 700)

User defined surface control mappings:

Mackie Button	Modifiers	Host Function
Foot Switch A		Transport.TogglePlay
Foot Switch A	Shift	
Foot Switch B		Transport.Rec
Foot Switch B	Shift	
PLAY		Transport.Pause
PLAY	Shift	
PLAY	Alt	

Clear
Clear All
Default All

Available host functions:

Project

Function	Current Mapping
Project.New	Unassigned
Project.NewQuick	Unassigned
Project.Save	Save
Project.SaveAs	Unassigned
Project.Load	Unassigned
Project.Redo	Shift+Undo
Project.Undo	Undo

Assign

OK

Step 8: (optional)

- You can assign the Magic * button and the master volume encoder click as you desire by selecting the button given below and clicking **Assign**
- In the factory preset these are the corresponding keys:

D700	Vegas
Magic *	Foot Switch A
Volume Click	Foot Switch B

Configure Mackie Control

Device type: Emulated Mackie Extender - 1

Channel mapping: Chan 9 - 16

MIDI input: MIDIIN2 (D 700)

MIDI output: MIDIOUT2 (D 700)

User defined surface control mappings:

Mackie Button	Modifiers	Host Function
Foot Switch A		Transport.TogglePlay
Foot Switch A	Shift	Transport.TogglePlay
Foot Switch B		Transport.Rec
Foot Switch B	Shift	Transport.Rec
PLAY		Transport.Pause
PLAY	Shift	Transport.Pause
PLAY	Alt	Transport.Pause

Available host functions:

Project

Function	Current Mapping
Project.New	Unassigned
Project.NewQuick	Unassigned
Project.Save	Save
Project.SaveAs	Unassigned
Project.Load	Unassigned
Project.Redo	Shift+Undo
Project.Undo	Undo



For more information
visit www.asparion.de