



Studio One

D700

Studio One

This guide shows you how to set up the D700 in Studio One. All pictures provided were taken with Studio One 3 but it is also applicable to most other Studio One versions.

All files mentioned in this guide can be found on the USB drive, in the Asparion Configurator installation folder or on our website.

If you are having trouble with anything in this guide, please contact us via our website www.asparion.de/contact and we'll immediately help you.

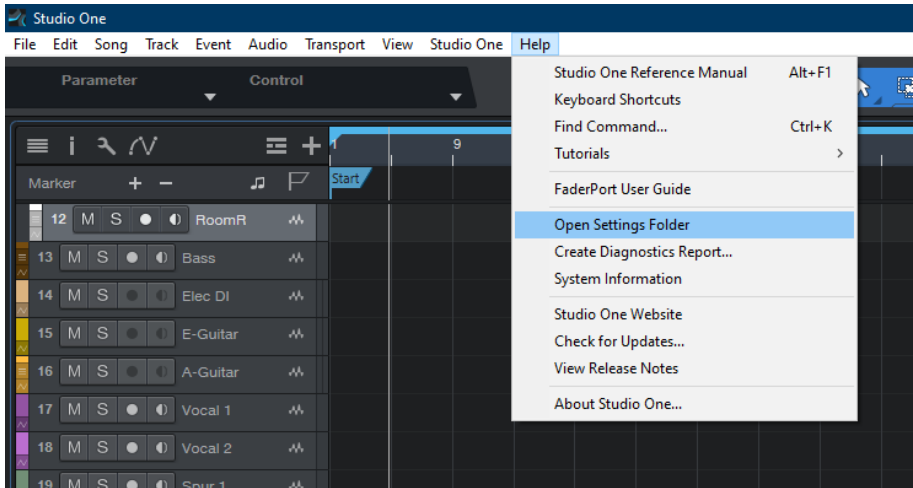
Step 1:

- **Select the Studio One preset**

How to select a preset is described in the main manual.

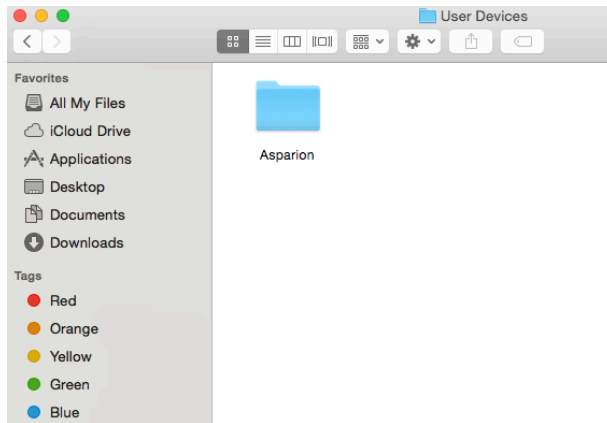
Step 2:

- Open Studio One
- Click on **Help->Open Settings Folder**



Step 3:

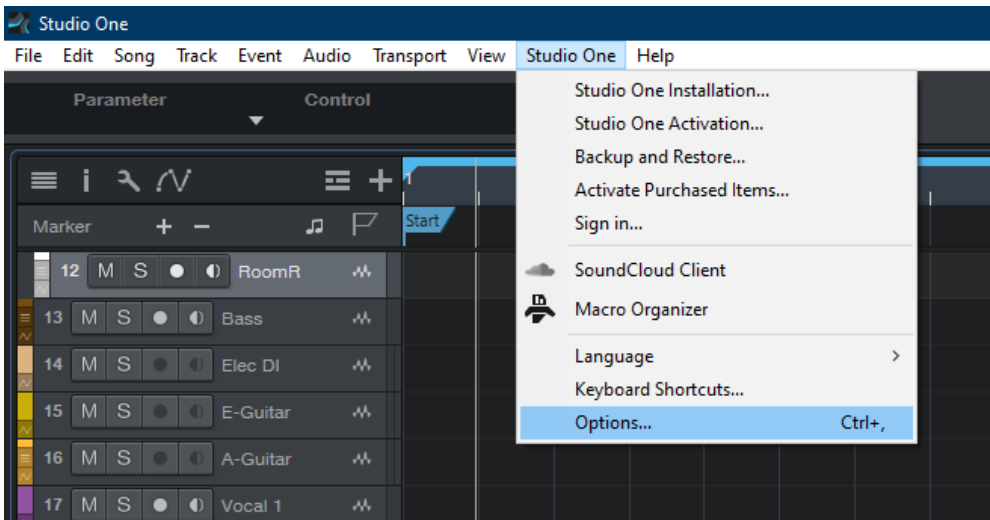
- Copy the contents of the file **Studio One Asparion D700.zip** to the folder **User Devices**



If there is no folder named "User Devices" you should create one first

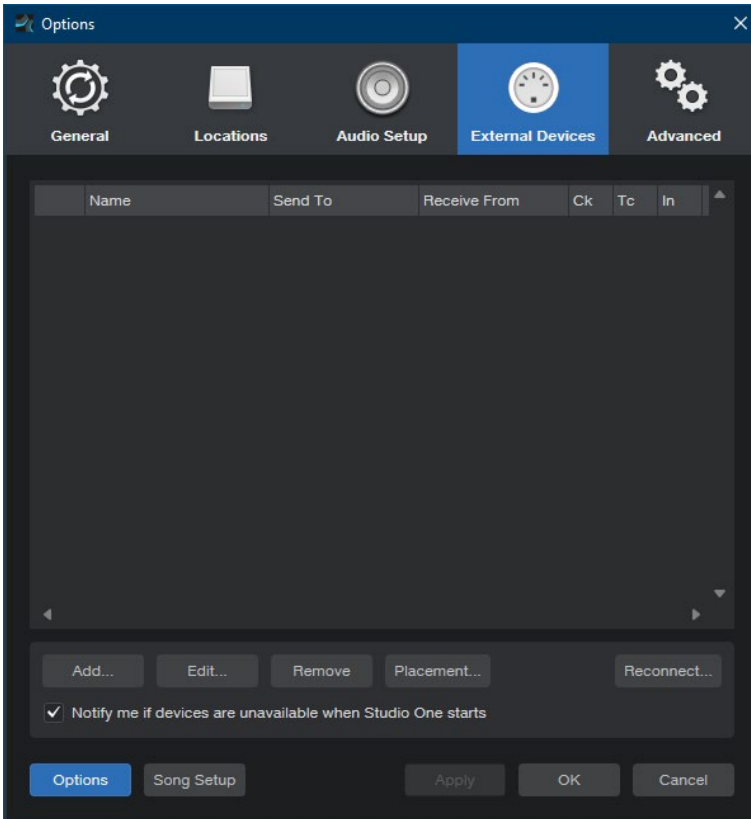
Step 4:

- Restart Studio One
- Click on **Studio One->Preferences...**



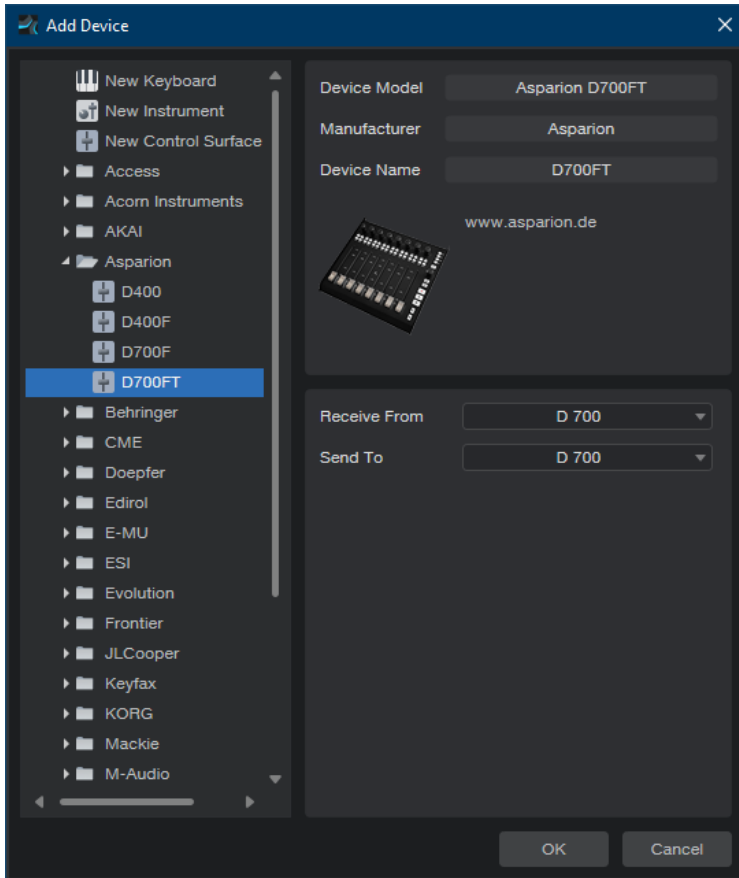
Step 5:

- Go to **External Devices**
- Click **Add...**



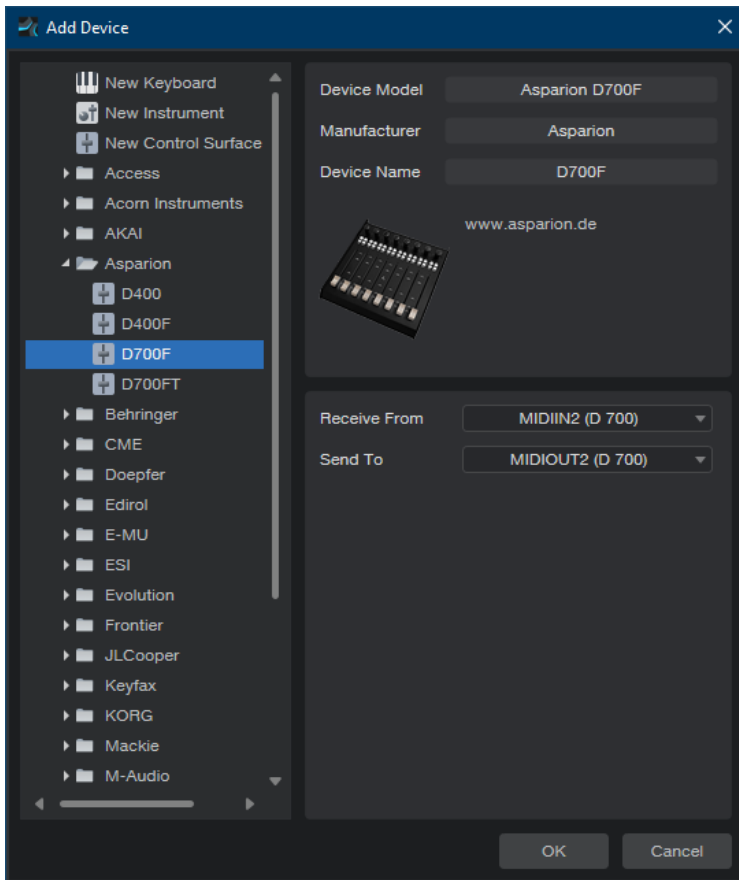
Step 6:

- Select **Asparion D700** from the list
- Select **D700 Port 1 (resp. D700)** as shown below
- Click **OK**



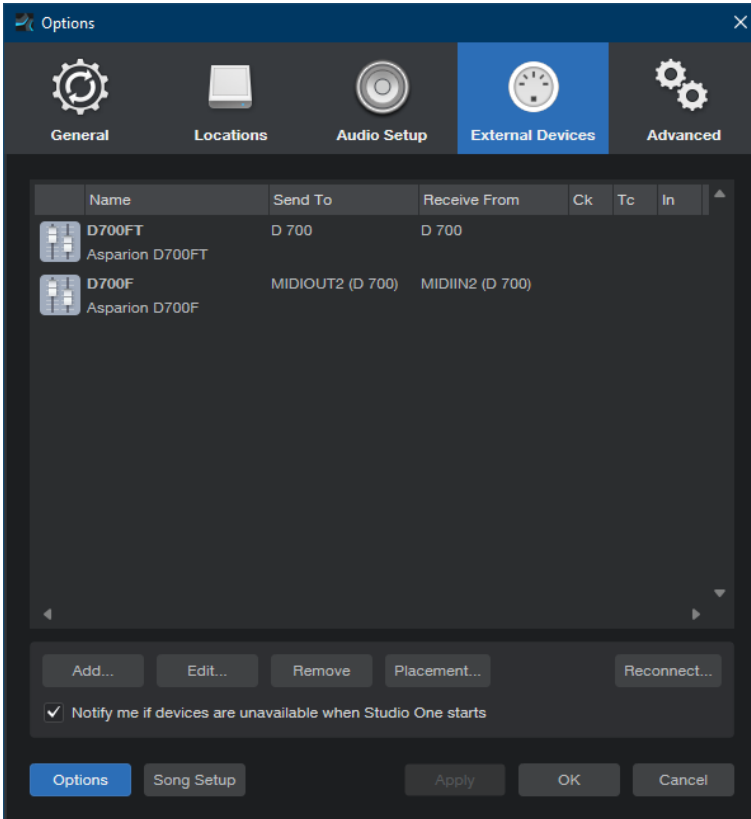
Step 7: (optional)

- If you want to connect more than one extension, you should redo step 5 and 6 but select **D700 Port 2 (resp. D700(2))** and **Asparion D700F**
If there is only one D700 showing up, you need to enable the extensions first. How you can do that is described in the main manual.



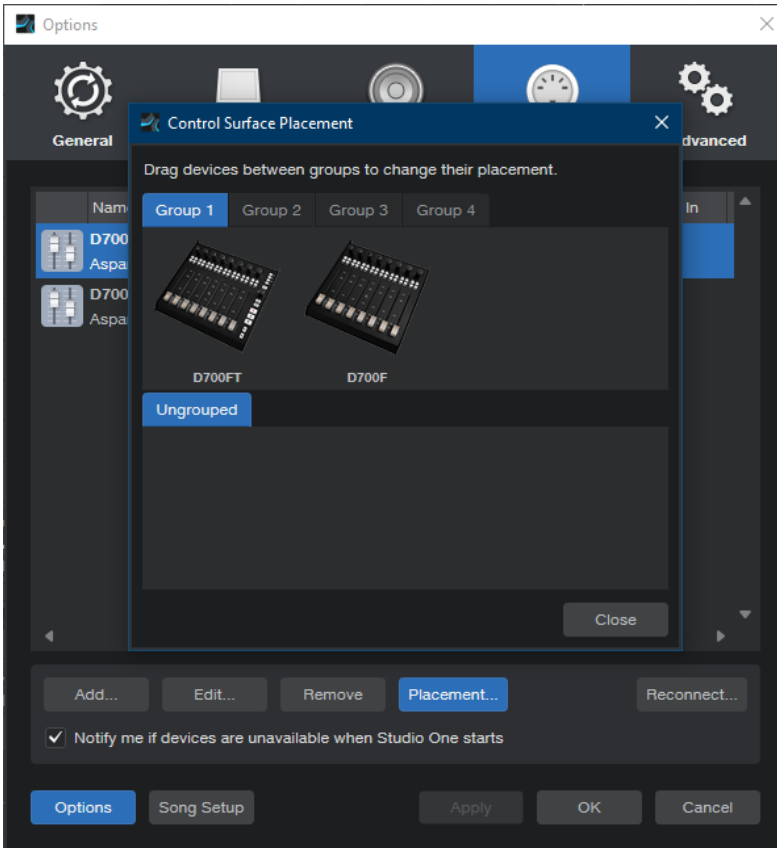
Step 8: (optional)

- Go to **Placement...**



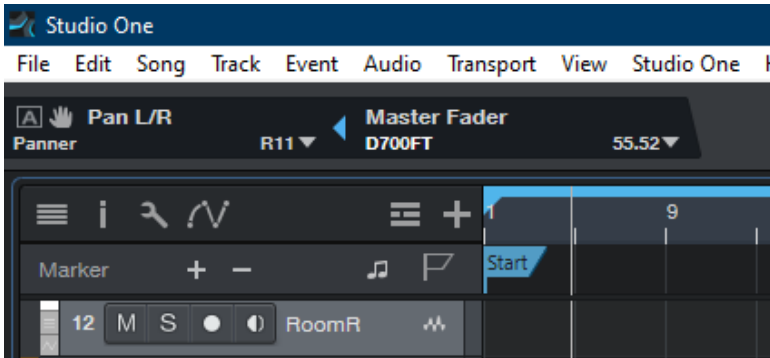
Step 9: (optional)

- Group all devices in the desired order



Step 10: (optional)

- All knobs can be assigned freely. To do that, e.g., rotate an encoder on the D700 and afterwards one in Studio One. With the blue arrow you can connect them



- A yellow arrow connects in an active window



- In addition to that it is possible to connect elements in the **External Devices** window via right click and **Assign Command...**



If you are having trouble with this, you should have a look at the manual of your DAW.

Hints:

- With the knobs **Pan**, **EQ**, **Send** and **FX**, you can assign a function to the encoders
- In **FX** mode the encoders can be freely assigned. See **Step 10**



For more information
visit www.asparion.de