



Samplitude

D700

Samplitude

This guide shows you how to set up the D700 in Samplitude. All pictures provided were taken with Samplitude Pro X7 but it is also applicable to most other Samplitude versions.

All files mentioned in this guide can be found on the USB drive, in the Asparion Configurator installation folder or on our website.

If you are having trouble with anything in this guide, please contact us via our website www.asparion.de/contact and we'll immediately help you.

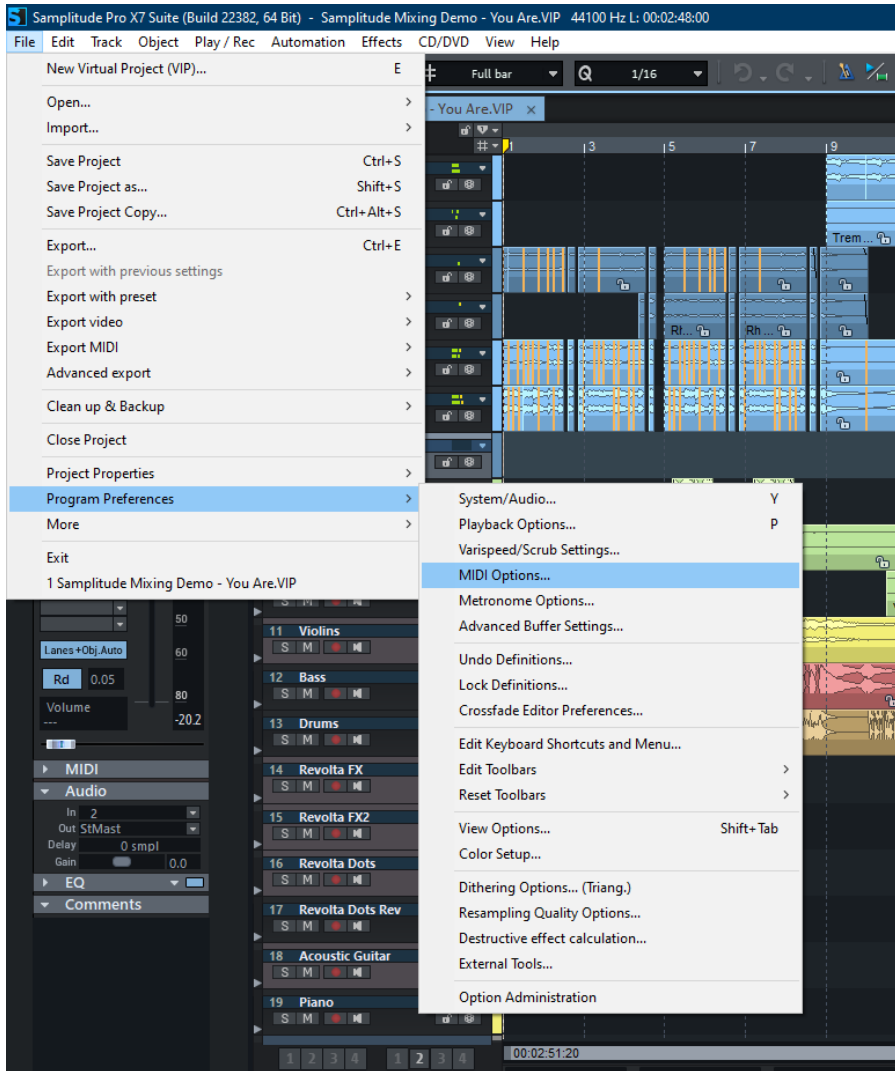
Step 1:

- **Select the Samplitude preset**

How to select a preset is described in the main manual.

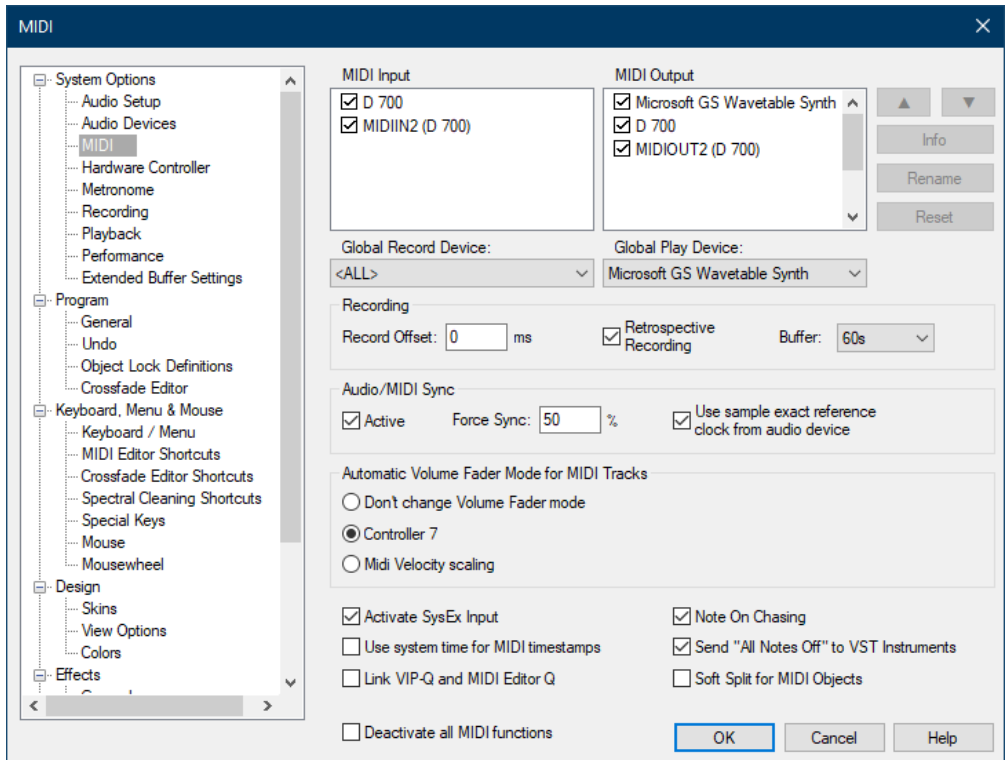
Step 2:

- Open Samplitude
- Click on **File->Program Preferences->MIDI Options...**



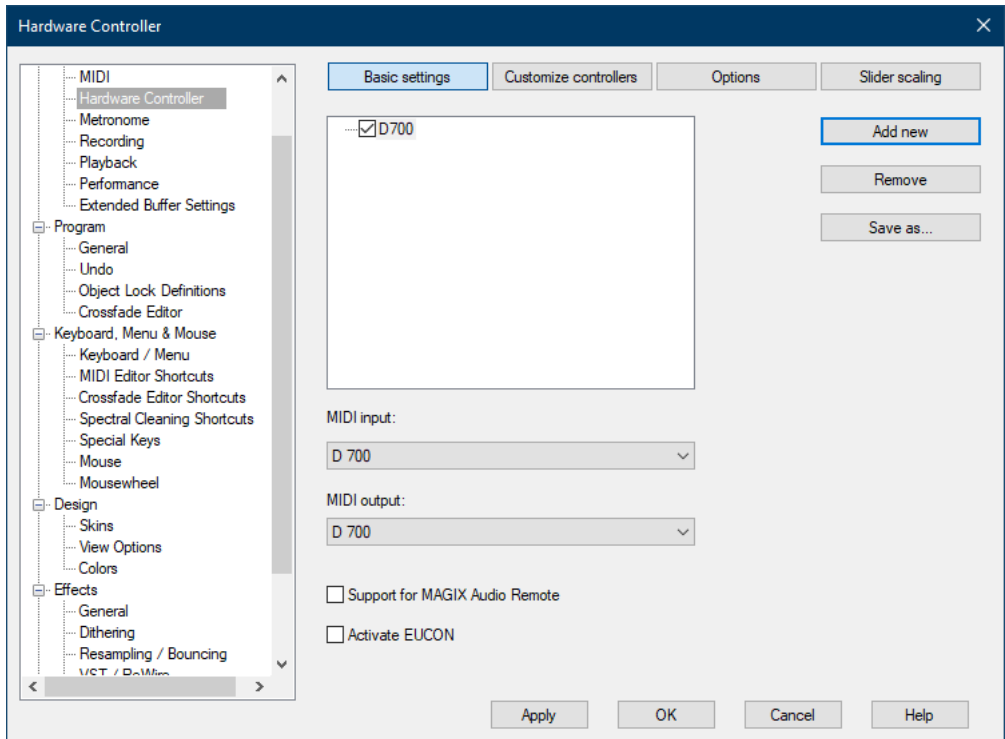
Step 3:

- Check all devices containing **D700**
- Make sure **Activate SysEx Input** is checked



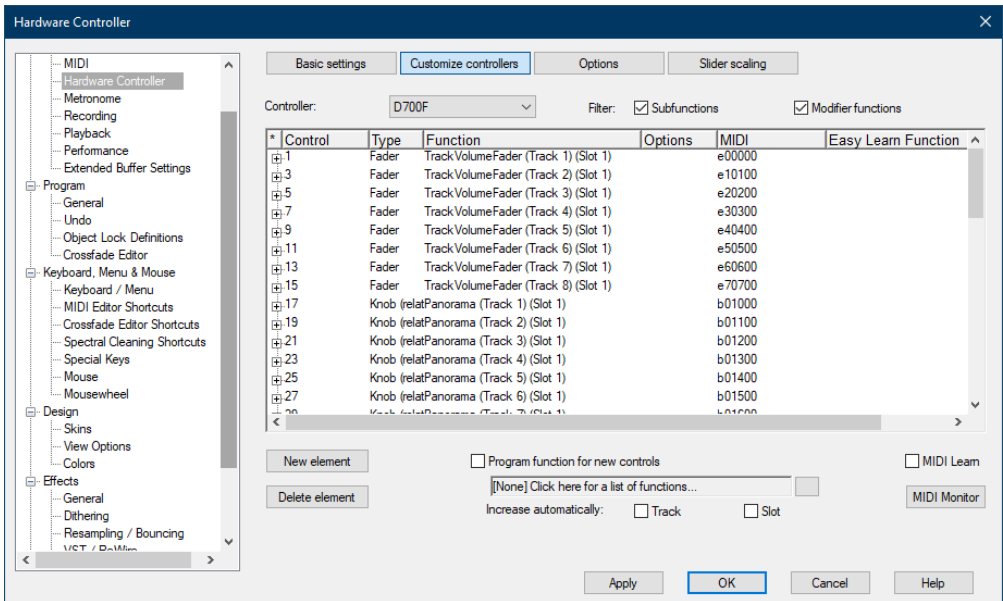
Step 4:

- Go to **Hardware Controller**
- Click on **Add new** and choose the file **D700.cpsxml**
- Select **D700** as **input** and **output**



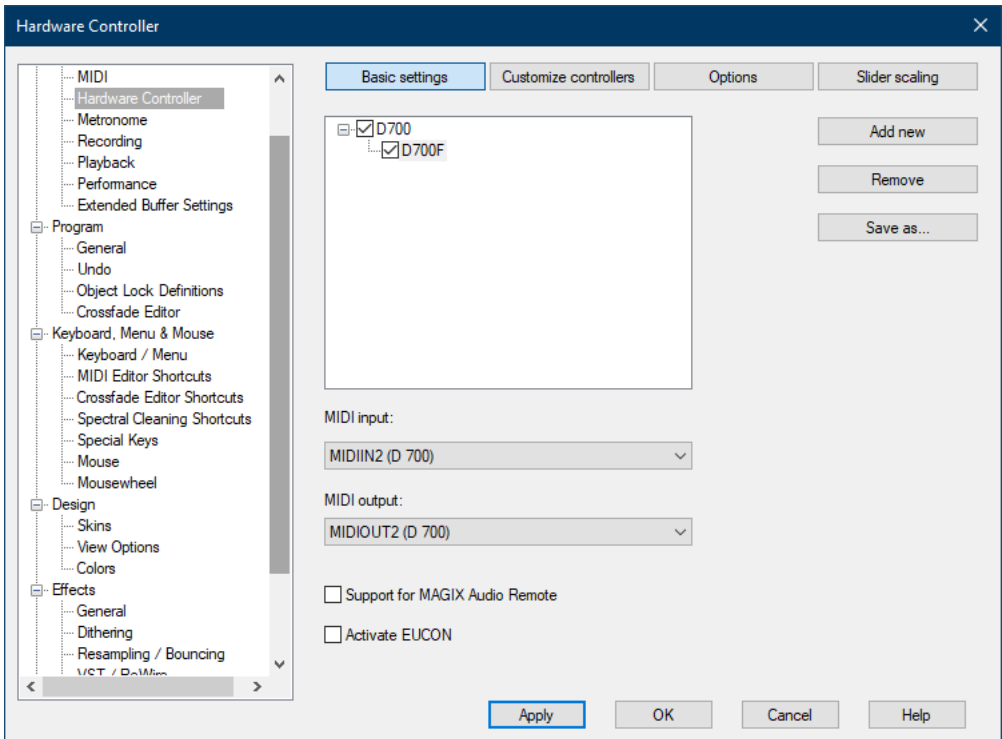
Step 5: (optional)

- Go to **Customize controllers**
- Here you can assign functions to every button as you desire



Step 6: (optional)

- If you want to connect more than one extension, you should redo step 3 and 4 but select **D700 (2)** as **input** and **output** and the file **D700 Extension.cpsxml**
If there is only one D700 showing up, you need to enable the extensions first. How you can do that is described in the main manual.





For more information
visit www.asparion.de