



Reason

D700

Reason

This guide shows you how to set up the D700 in Reason. All pictures provided were taken with Reason 12 but it is also applicable to most other Reason versions.

All files mentioned in this guide can be found on the USB drive, in the Asparion Configurator installation folder or on our website.

If you are having trouble with anything in this guide, please contact us via our website www.asparion.de/contact and we'll immediately help you.

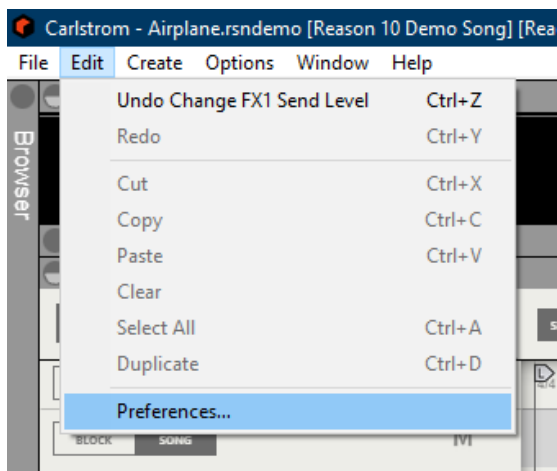
Step 1:

- **Select the Reason preset**

How to select a preset is described in the main manual.

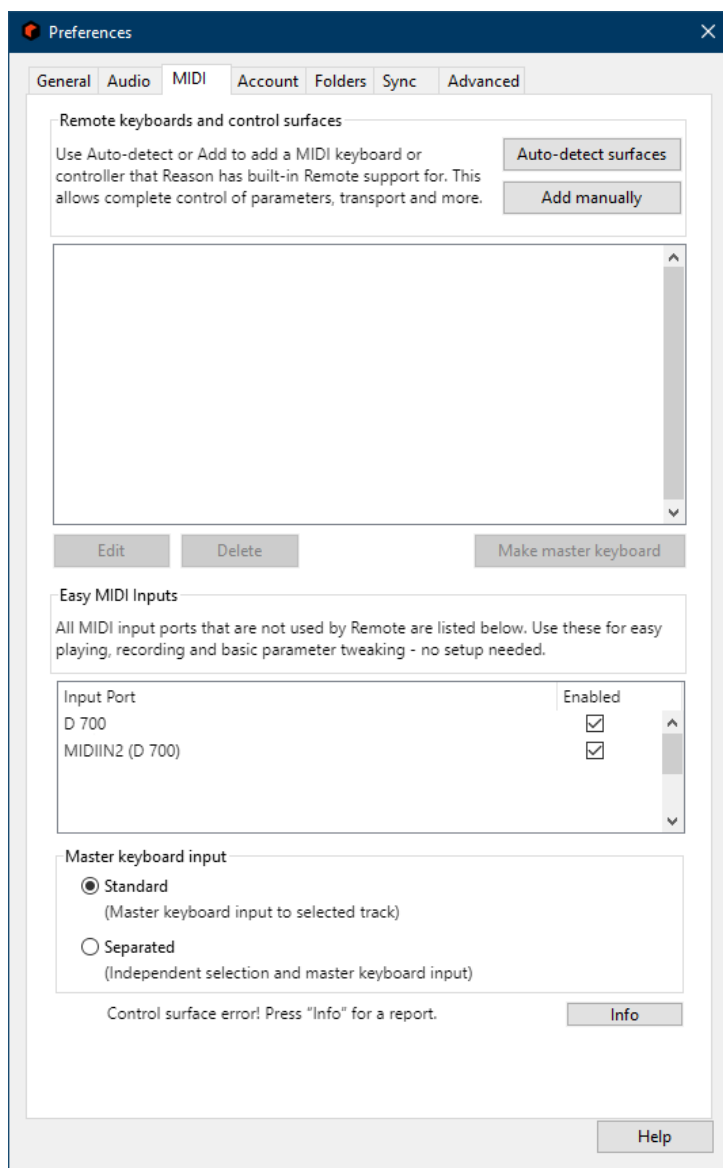
Step 2:

- Open Reason
- Click on **Edit->Preferences...**



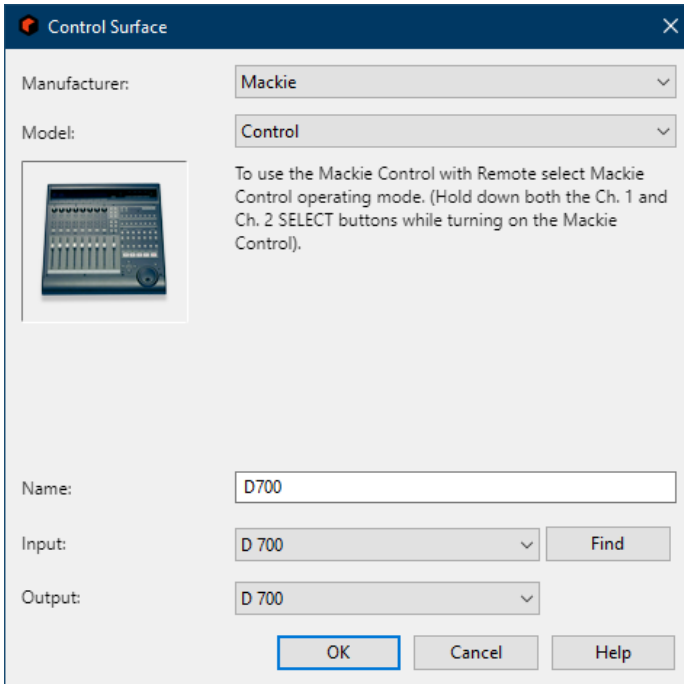
Step 3:

- Go to **Control Surfaces**
- Click **Add**



Step 4:

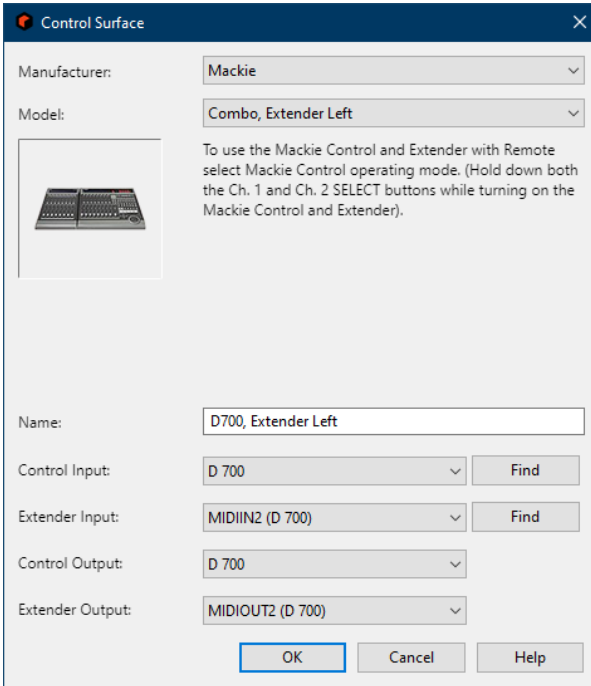
- Select **Mackie** and **Control** and **D700** as shown below
- Click **OK**



The screenshot shows the 'Control Surface' configuration window. The 'Manufacturer' dropdown is set to 'Mackie' and the 'Model' dropdown is set to 'Control'. A small image of the Mackie D700 control surface is displayed on the left. To the right of the image, there is a text box with the following instructions: 'To use the Mackie Control with Remote select Mackie Control operating mode. (Hold down both the Ch. 1 and Ch. 2 SELECT buttons while turning on the Mackie Control)'. The 'Name' field contains 'D700'. The 'Input' dropdown is set to 'D 700' and has a 'Find' button next to it. The 'Output' dropdown is also set to 'D 700'. At the bottom, there are three buttons: 'OK', 'Cancel', and 'Help'. The 'OK' button is highlighted with a blue border.

Step 5: (optional)

- If you want to connect more than one extension, you should redo step 3 and 4 but select the options as shown below
If there is only one D700 showing up, you need to enable the extensions first. How you can do that is described in the main manual.

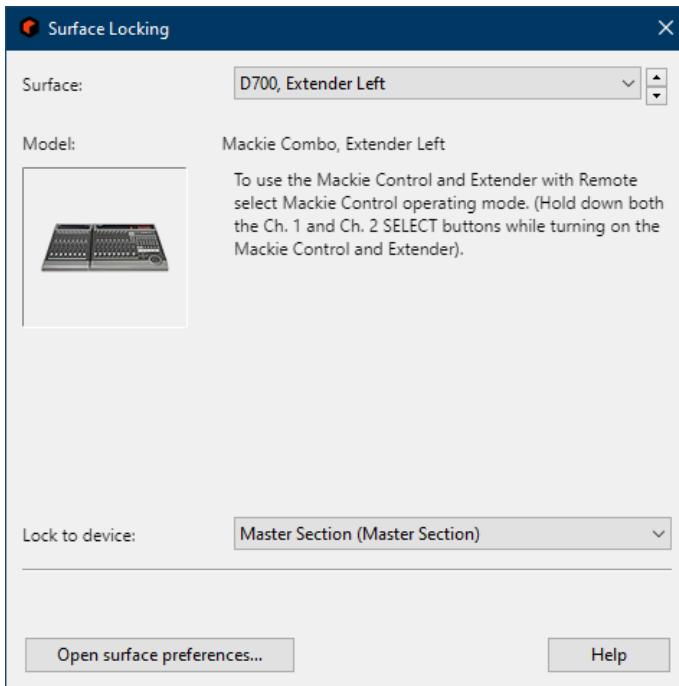


The screenshot shows the 'Control Surface' configuration window. The 'Manufacturer' is set to 'Mackie' and the 'Model' is 'Combo, Extender Left'. A small image of the Mackie D700 Extender Left is shown. Below the image, there is a text box with the following text: 'To use the Mackie Control and Extender with Remote select Mackie Control operating mode. (Hold down both the Ch. 1 and Ch. 2 SELECT buttons while turning on the Mackie Control and Extender)'. The 'Name' field is 'D700, Extender Left'. The 'Control Input' is 'D 700', 'Extender Input' is 'MIDIIN2 (D 700)', 'Control Output' is 'D 700', and 'Extender Output' is 'MIDIOUT2 (D 700)'. There are 'Find' buttons next to the 'Control Input' and 'Extender Input' dropdowns. At the bottom, there are 'OK', 'Cancel', and 'Help' buttons.

Manufacturer:	Mackie	
Model:	Combo, Extender Left	
Name:	D700, Extender Left	
Control Input:	D 700	Find
Extender Input:	MIDIIN2 (D 700)	Find
Control Output:	D 700	
Extender Output:	MIDIOUT2 (D 700)	

Hints:

- In the **Options->Surface Locking** window you can choose which parameters the device controls





For more information
visit www.asparion.de