



Reaper DrivenByMoss

**D700**

# Reaper DrivenByMoss

This guide shows you how to set up the D700 in Reaper. All pictures provided were taken with Reaper 7.14 but it is also applicable to most other Reaper versions.

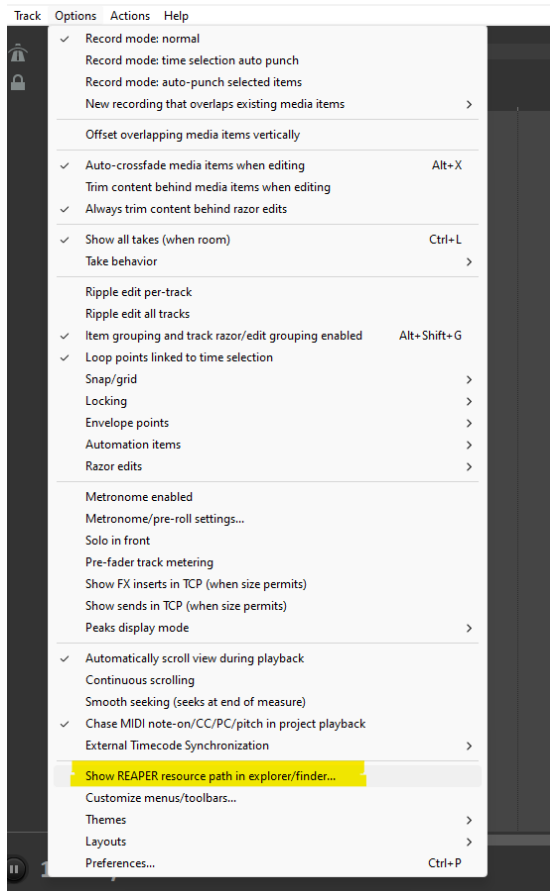
All files mentioned in this guide can be found on the USB drive, in the Asparion Configurator installation folder or on our website.

If you are having trouble with anything in this guide, please contact us via our website [www.asparion.de/contact](http://www.asparion.de/contact) and we'll immediately help you.

*Instead of connecting the D700 via the integrated Reaper function, it is also possible to connect the D700 via DrivenByMoss. This a third-party-plugin which offers a wider range of functions.*

## Step 1:

- Extract the DrivenByMoss files to Reaper  
<https://www.mossgrabers.de/Software/Reaper/Reaper.html>
- The folder for the files can be opened from the Reaper menu. Press **Options->Show REAPER resource path...**
- Place all the files and folders from the .zip in the opened folder in **UserPlugins** and close Reaper

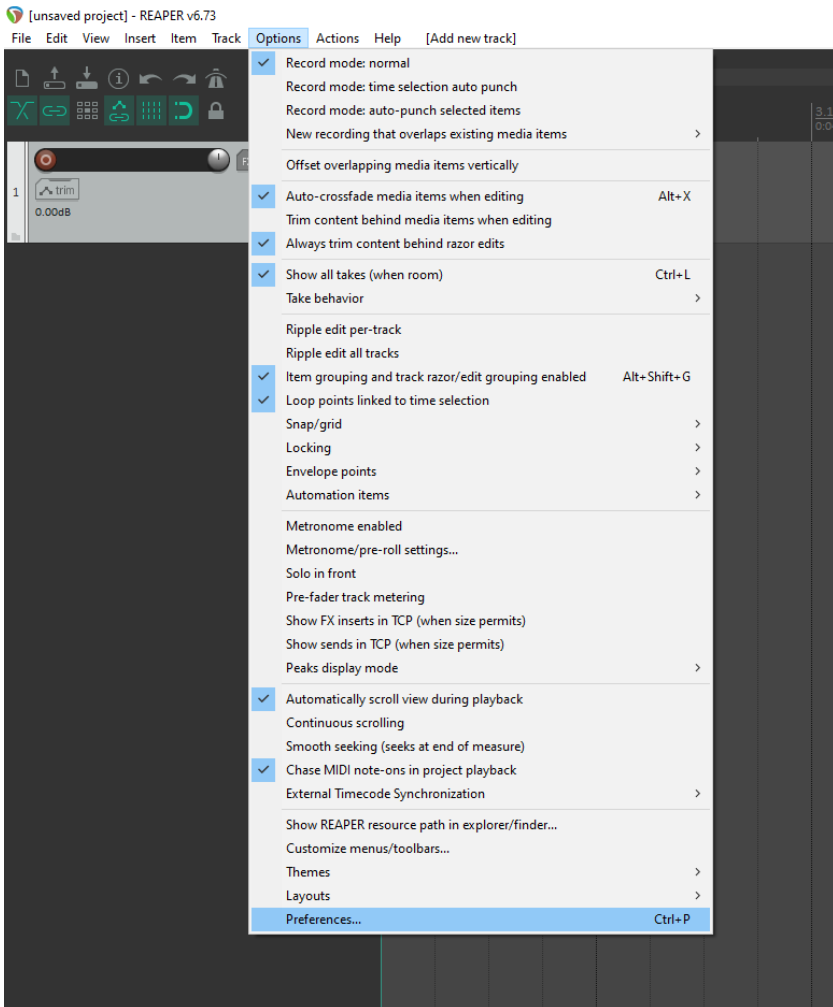


## Step 2:

- **Select the Reaper DrivenByMoss preset**  
*How to select a preset is described in the main manual.*

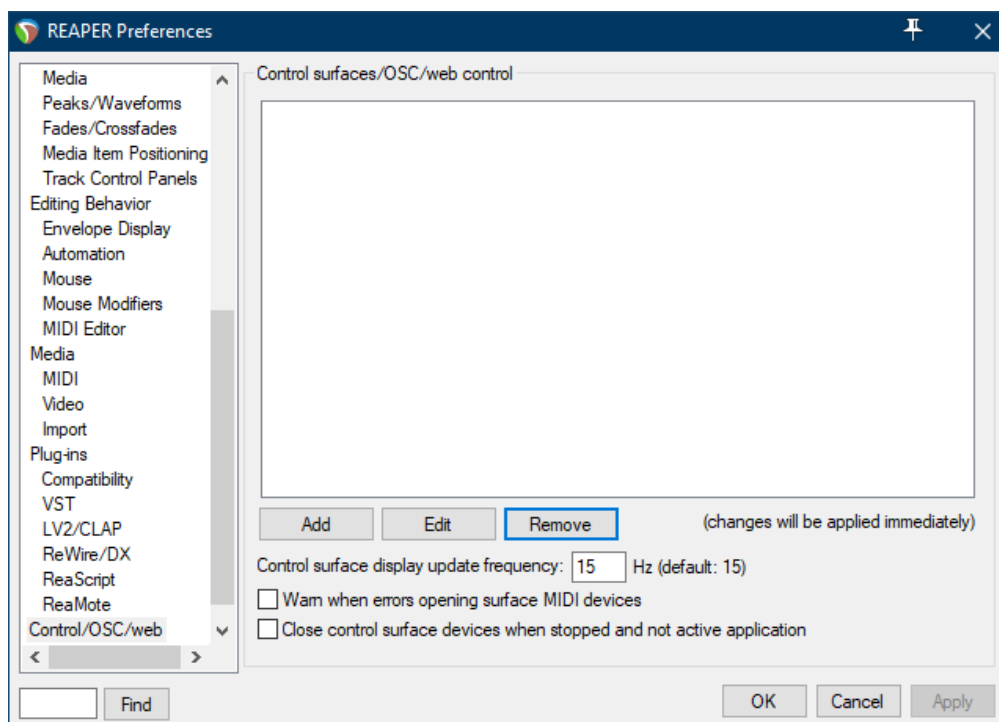
## Step 3:

- Open Reaper
- Click on **Options->Preferences...**



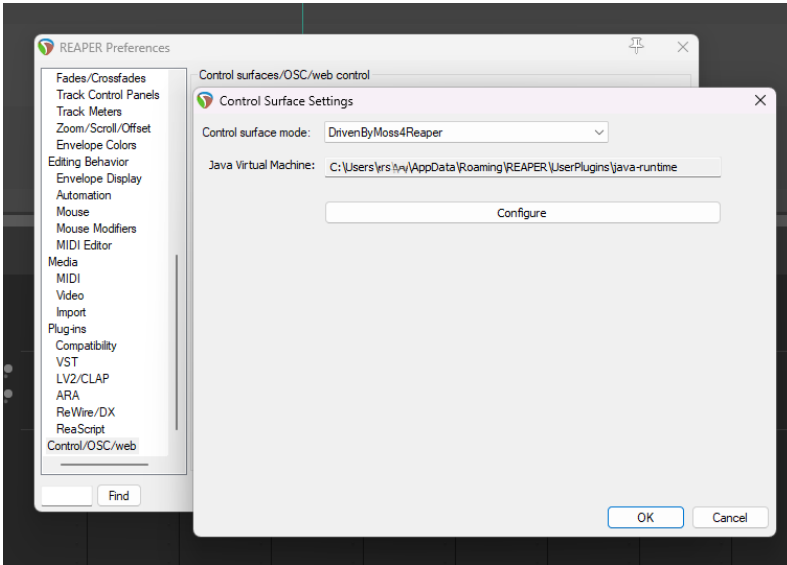
## Step 4:

- Go to **Control Surfaces**
- Click **Add**



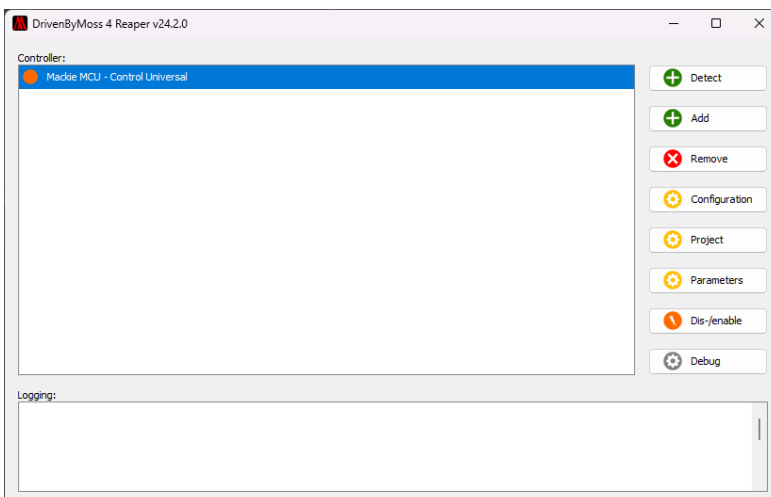
## Step 5:

- Select **DrivenByMoss** from the list



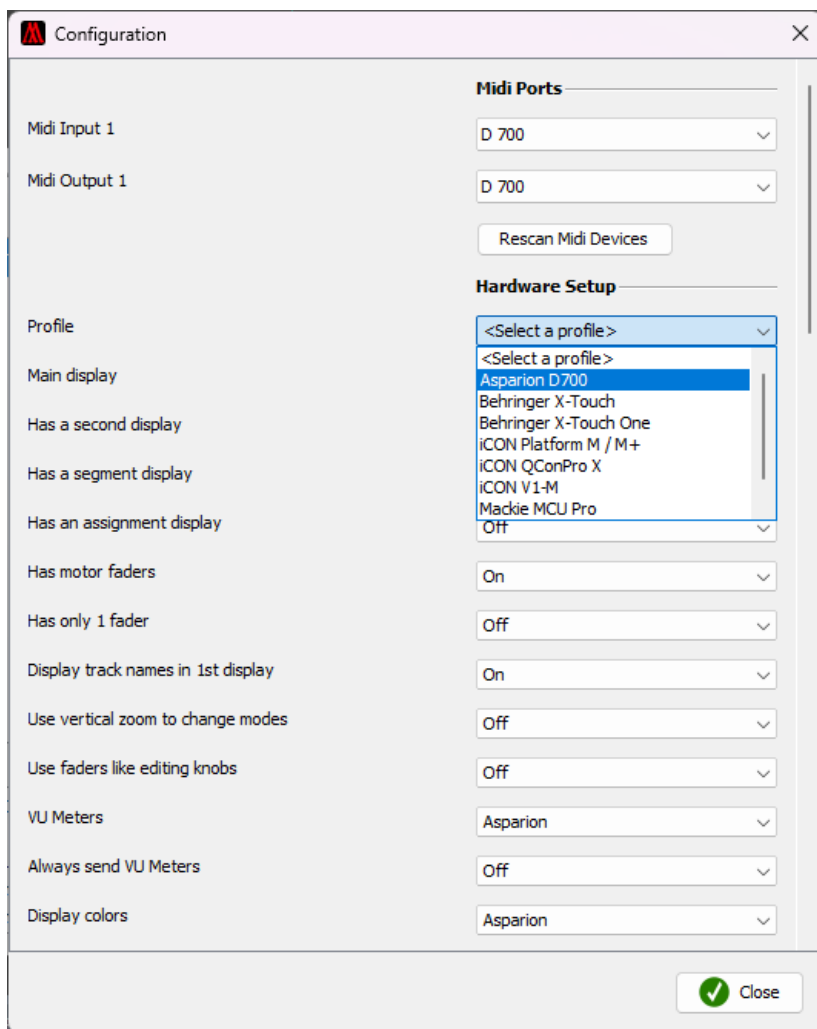
5

- Press **Add** and add **Mackie MCU**



## Step 6:

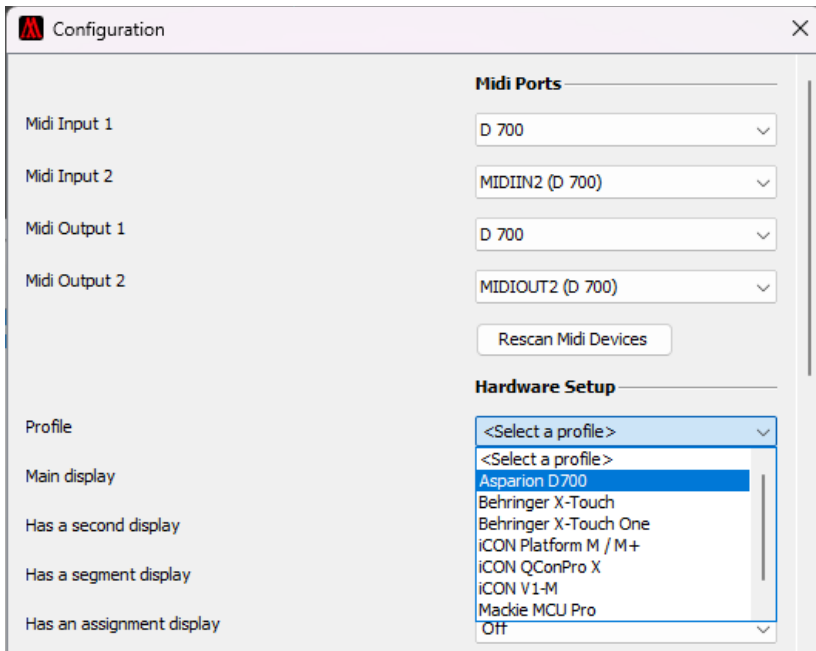
- Press **Configuration** and select **Asparion D700** as shown below



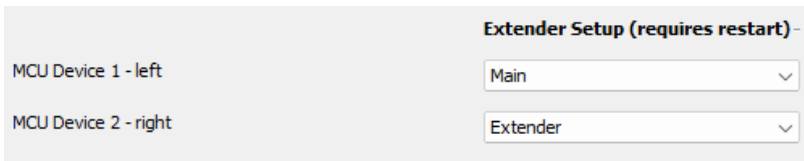
## Step 7: (optional)

- If you want to connect more than one extension you should redo step 5 and 6 but select **D700 (2)** and **MCU + 1 Extender**

*If there is only one D700 showing up, you need to enable the extensions first. How you can do that is described in the main manual.*



- Make sure to always set **left** to **Main**. No matter where it actually is





## Hints:

- With the knobs **Pan**, **EQ**, **Send** and **FX** you can assign a function to the encoders. With a click on the encoder, you can reset the parameter
- With a double click on the **Bank** knobs, you can move through single channels, or in FX and EQ mode through different parameter pages
- For more information about the DrivenByMoss plugin, visit:  
<https://www.mossgrabbers.de/>



For more information  
visit [www.asparion.de](http://www.asparion.de)