



Reaper CSI

**D700**

# Reaper CSI

This guide shows you how to set up the D700 in Reaper. All pictures provided were taken with Reaper 6.73 but it is also applicable to most other Reaper versions.

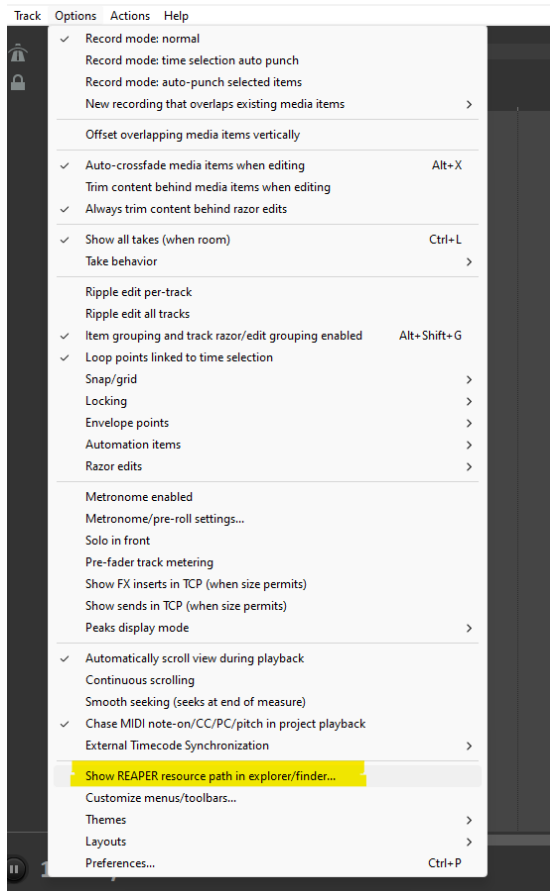
All files mentioned in this guide can be found on the USB drive, in the Asparion Configurator installation folder or on our website.

If you are having trouble with anything in this guide, please contact us via our website [www.asparion.de/contact](http://www.asparion.de/contact) and we'll immediately help you.

Instead of connecting the D700 via the integrated Reaper function, it is also possible to connect the D700 via the Control Surface Integrator (CSI). This is a third-party-plugin which offers a wider range of functions.

## Step 1:

- Download and install CSI. For more information visit: [https://github.com/GeoffAWaddington/CSI\\_Install](https://github.com/GeoffAWaddington/CSI_Install)
- The folder for the CSI files can be opened from the Reaper menu. Press **Options->Show REAPER resource path...**
- Place the CSI files in the folder and close Reaper



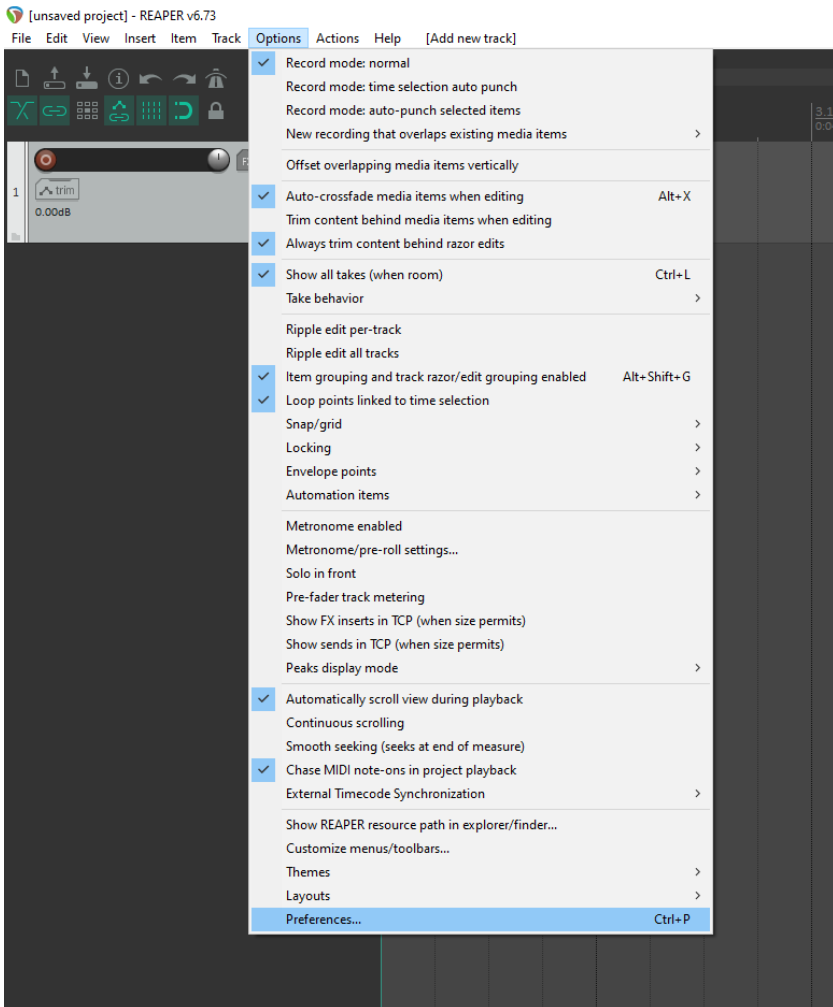
## Step 2:

- **Select the Reaper CSI preset**

*How to select a preset is described in the main manual.*

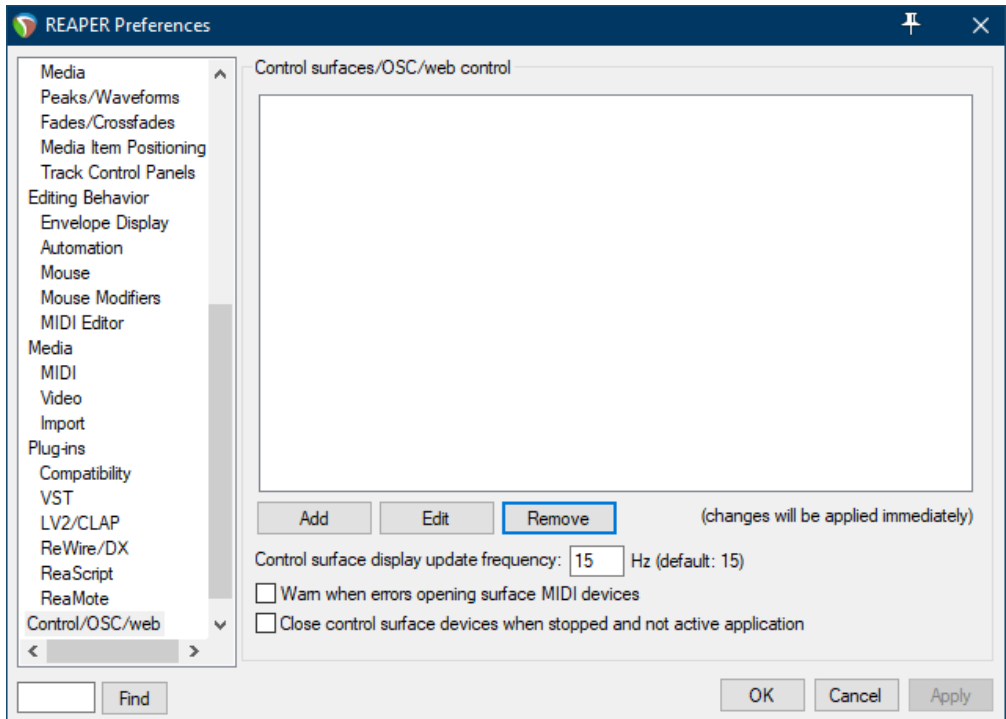
## Step 3:

- Open Reaper
- Click on **Options->Preferences...**



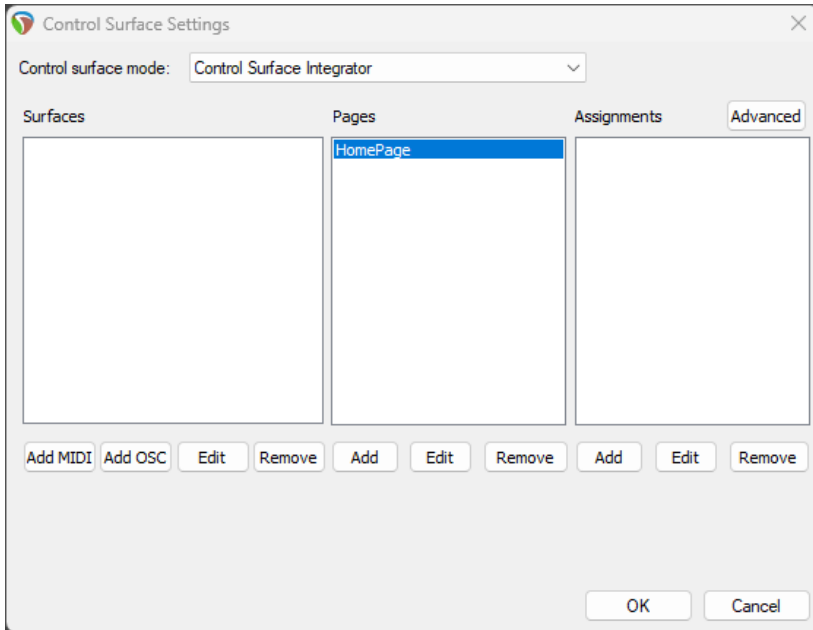
## Step 4:

- Go to **Control Surfaces**
- Click **Add**



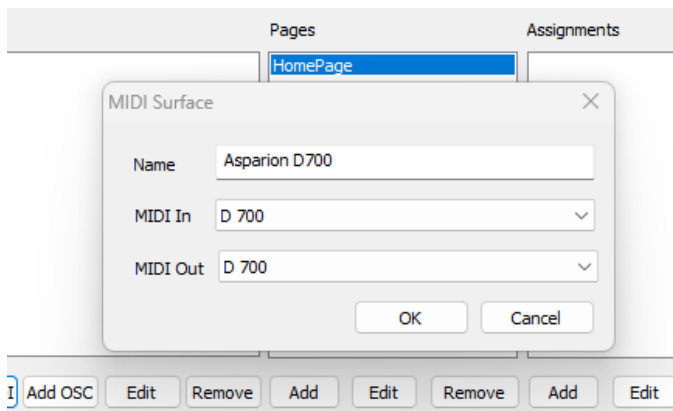
## Step 5:

- Select **Control Surface Integrator** from the list



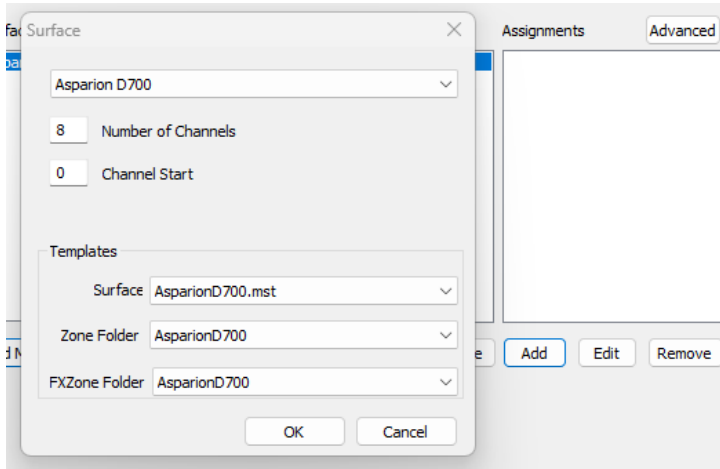
5

- Press **Add MIDI** and select **D700** as shown below



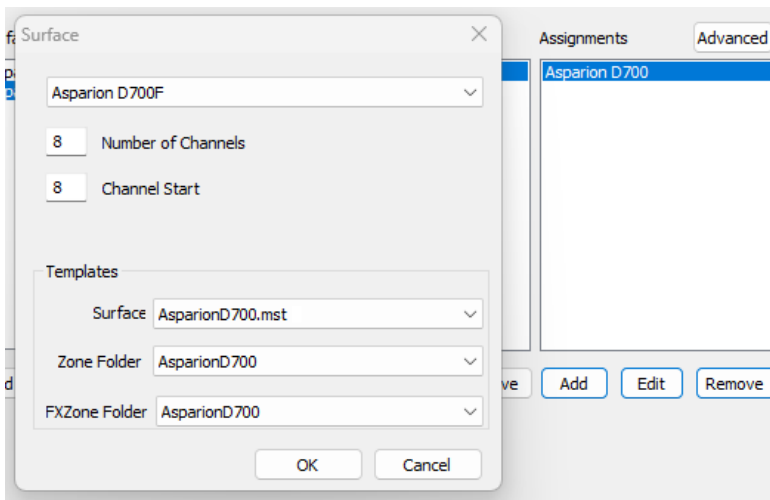
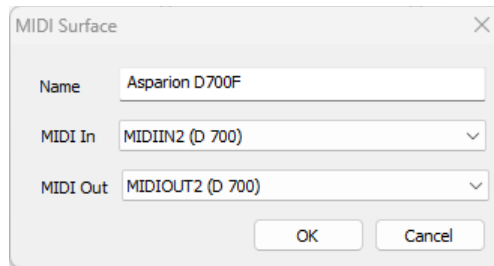
## Step 6:

- Press **Add** and select all options as shown below



## Step 7: (optional)

- If you want to connect more than one extension you should redo step 5 and 6 but select **D700 (2)** and set **Channel Start** to **8** (resp. 16, 24, ...)  
*If there is only one D700 showing up, you need to enable the extensions first. How you can do that is described in the main manual.*





## Hints:

- With the knobs **Pan**, **EQ**, **Send** and **FX** you can assign a function to the encoders. With a click on the encoder, you can reset the parameter
- The **EQ** button will assign the **Receive** channels to the encoders. The actual EQ can be controlled via the **FX** button like all other plugins
- Activate the **\***-Button to get an alternative function via the **Pan**, **EQ**, **Send** and **FX** knobs



For more information  
visit [www.asparion.de](http://www.asparion.de)