



Pro Tools

D700

Pro Tools

This guide shows you how to set up the D700 in Pro Tools. All pictures provided were taken with Pro Tools 2022 but it is also applicable to most other Pro Tools versions.

All files mentioned in this guide can be found on the USB drive, in the Asparion Configurator installation folder or on our website.

If you are having trouble with anything in this guide, please contact us via our website www.asparion.de/contact and we'll immediately help you.

Step 1:

- Select the Pro Tools preset

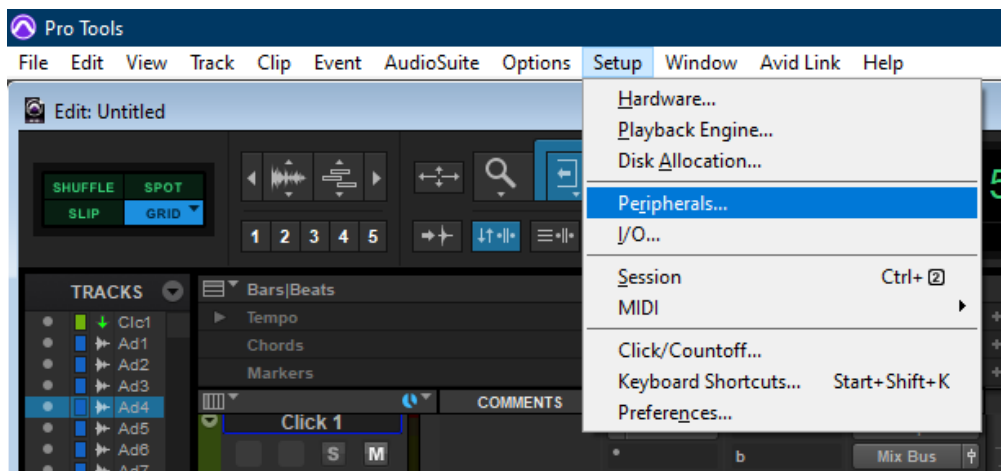
How to select a preset is described in the main manual.

Attention! *Given that the resolution of a LED ring in the HUI protocol is only 11 it might seem like the LED ring jumps.*

Attention! *Given that the HUI protocol has no dedicated master volume control the encoder might not have the desired function.*

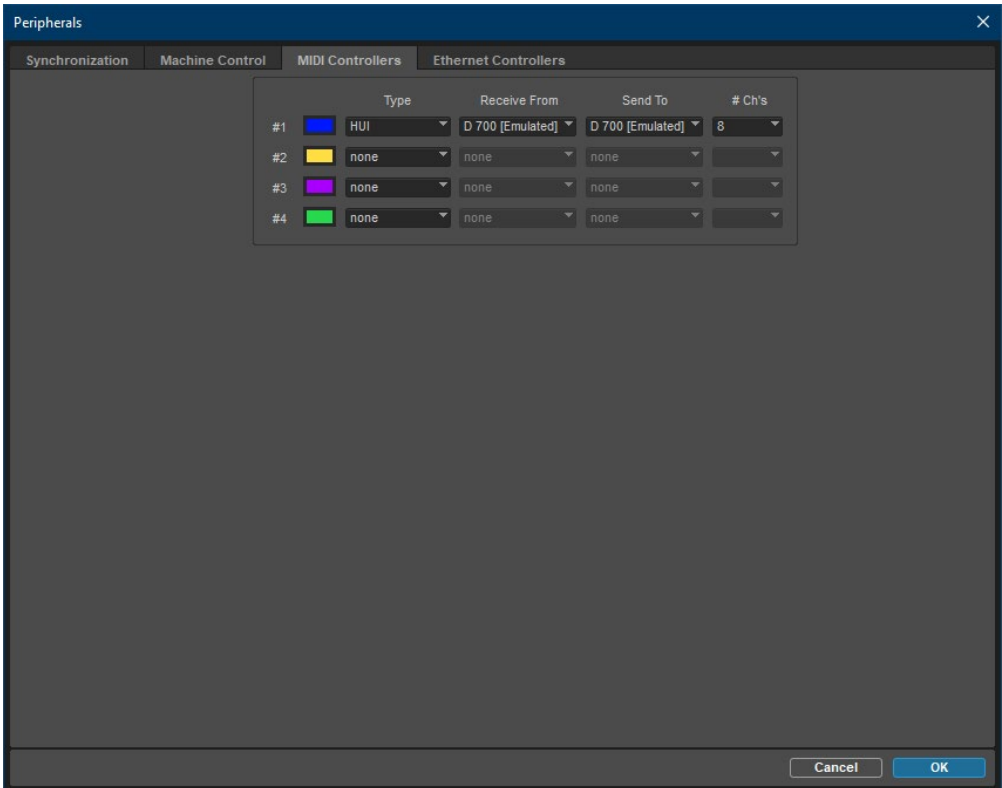
Step 2:

- Open Pro Tools
- Click on **Setup->Peripherals...**



Step 3:

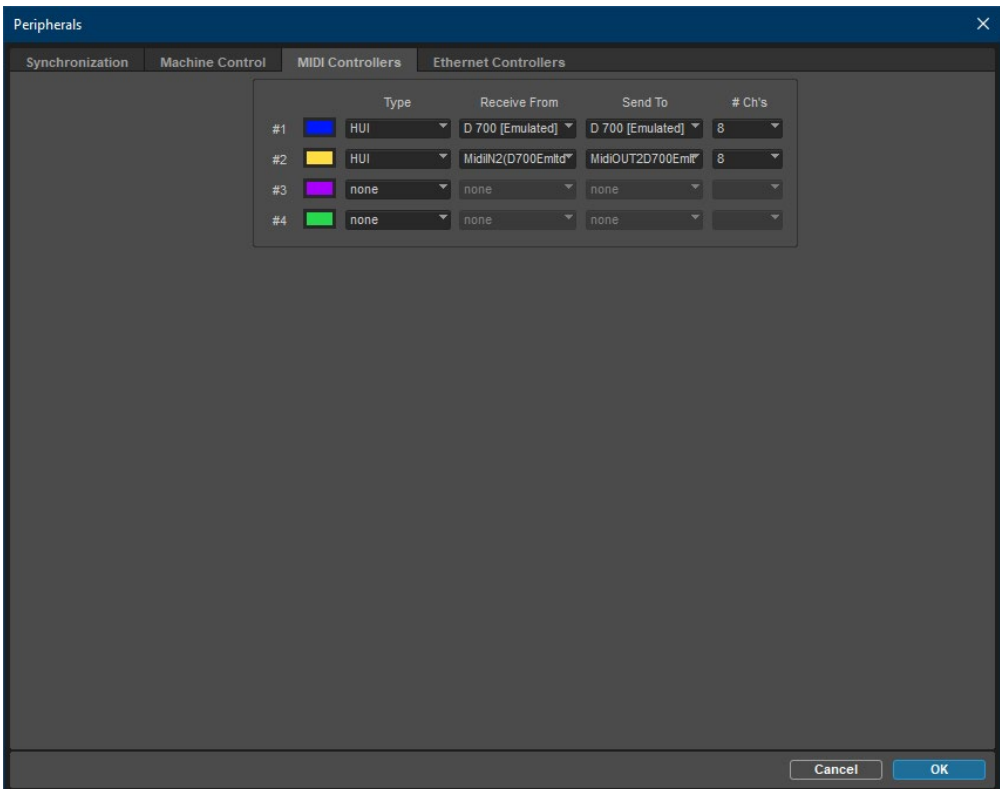
- Go to **Midi Controllers**
- Choose **HUI, D700, D700, 8**



Step 5: (optional)

- If you want to connect more than one extension, you should redo step 3 but select **D700 (2)**

If there is only one D700 showing up, you need to enable the extensions first. How you can do that is described in the main manual.



Hints:

- With the knobs **EQ**, **Send** and **FX** you can assign Send a, b and c to the encoders. Make sure your track actually has a Send defined
- The volume encoder can be used as a jog wheel surrogate. Press **Magic *** to activate **Scrub** mode or click the volume encoder to activate **Shuttle** mode



For more information
visit www.asparion.de