



Premiere Pro

D700

Premiere Pro

This guide shows you how to set up the D700 in Premiere Pro. All pictures provided were taken with Premiere Pro 2023 but it is also applicable to most other Premiere Pro versions.

All files mentioned in this guide can be found on the USB drive, in the Asparion Configurator installation folder or on our website.

If you are having trouble with anything in this guide, please contact us via our website www.asparion.de/contact and we'll immediately help you.

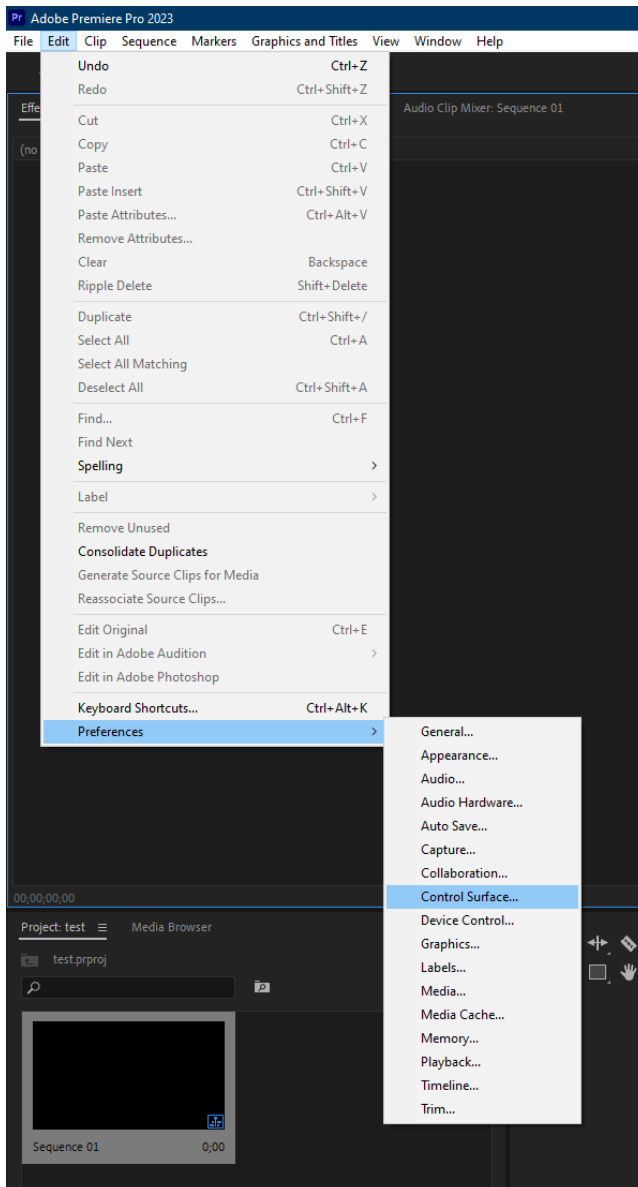
Step 1:

- **Select the Adobe preset**

How to select a preset is described in the main manual.

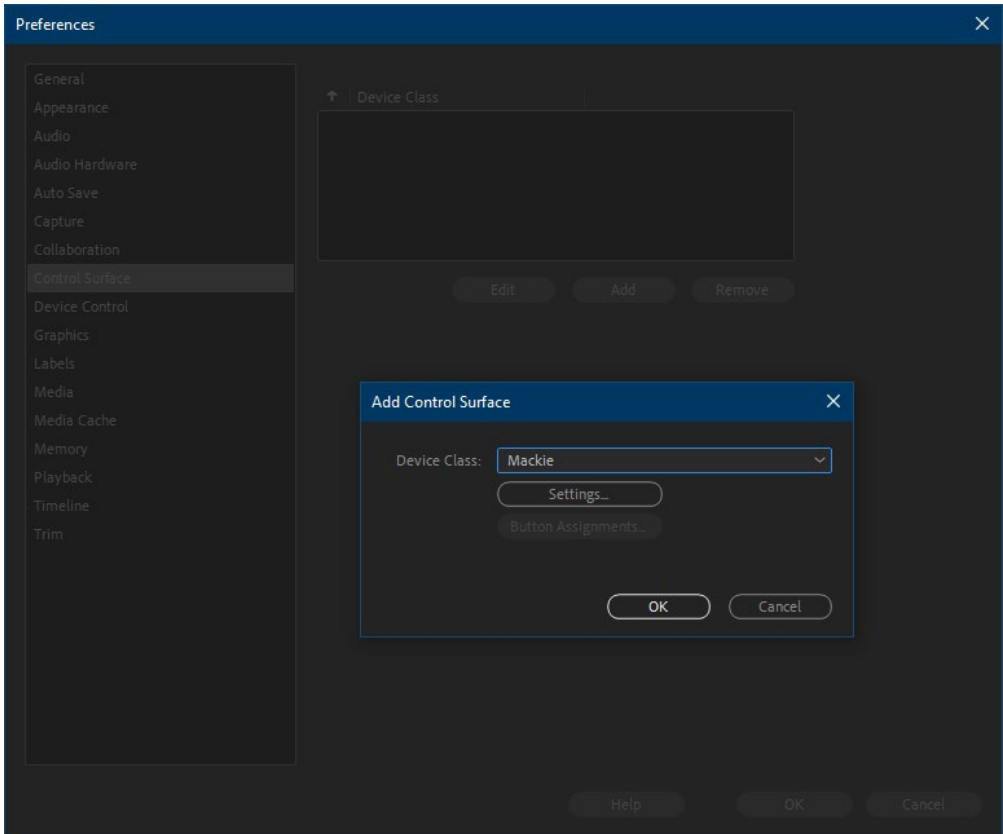
Step 2:

- Open Premiere Pro
- Click on **Edit->Preferences->Control Surface...**



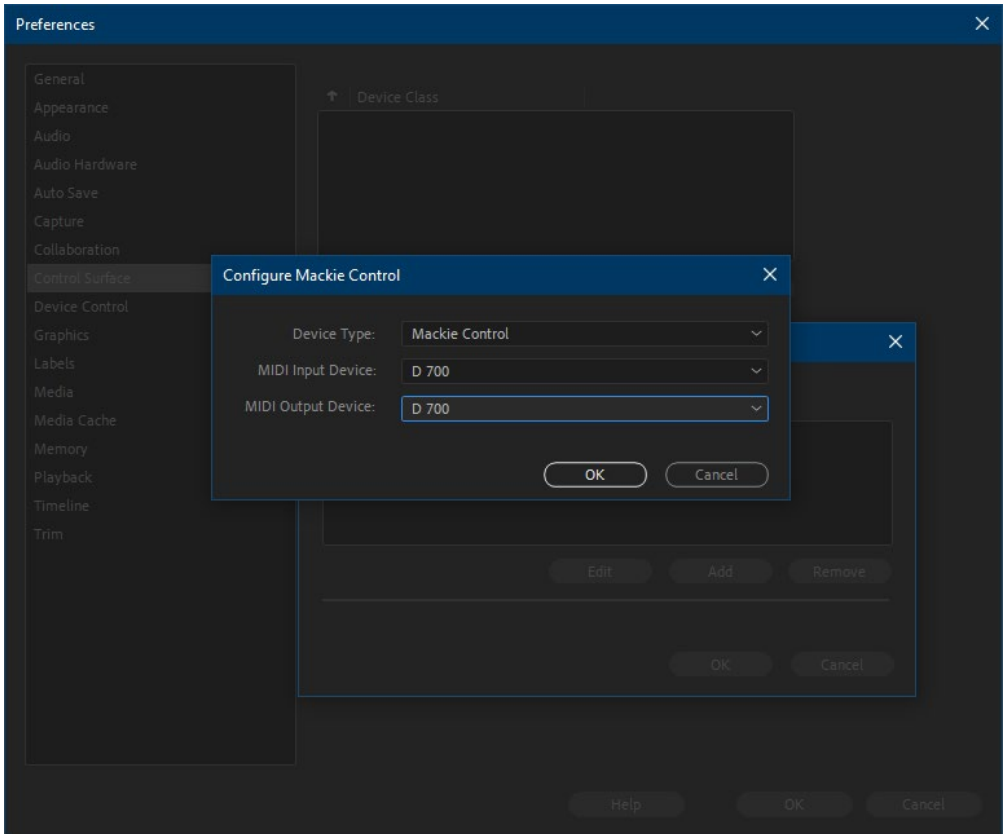
Step 3:

- Press **Add** and select **Mackie**



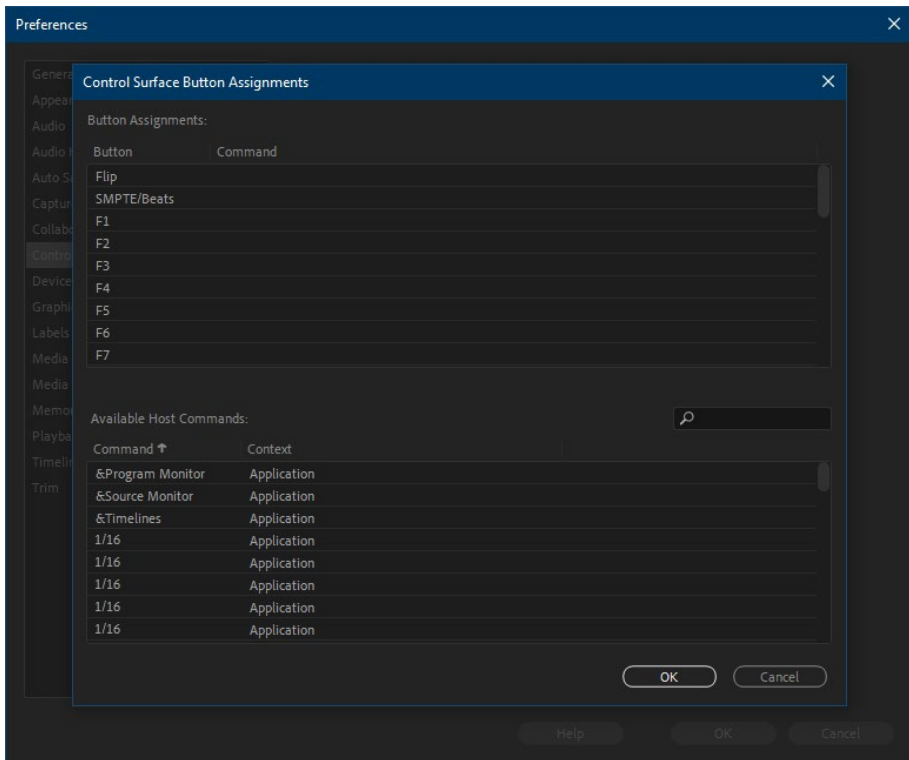
Step 4:

- Press **Settings** and **Add** and select **Mackie Control** and **D700**



Step 5: (optional)

- In the **Button Assignments** window, you can select what your unused buttons should do



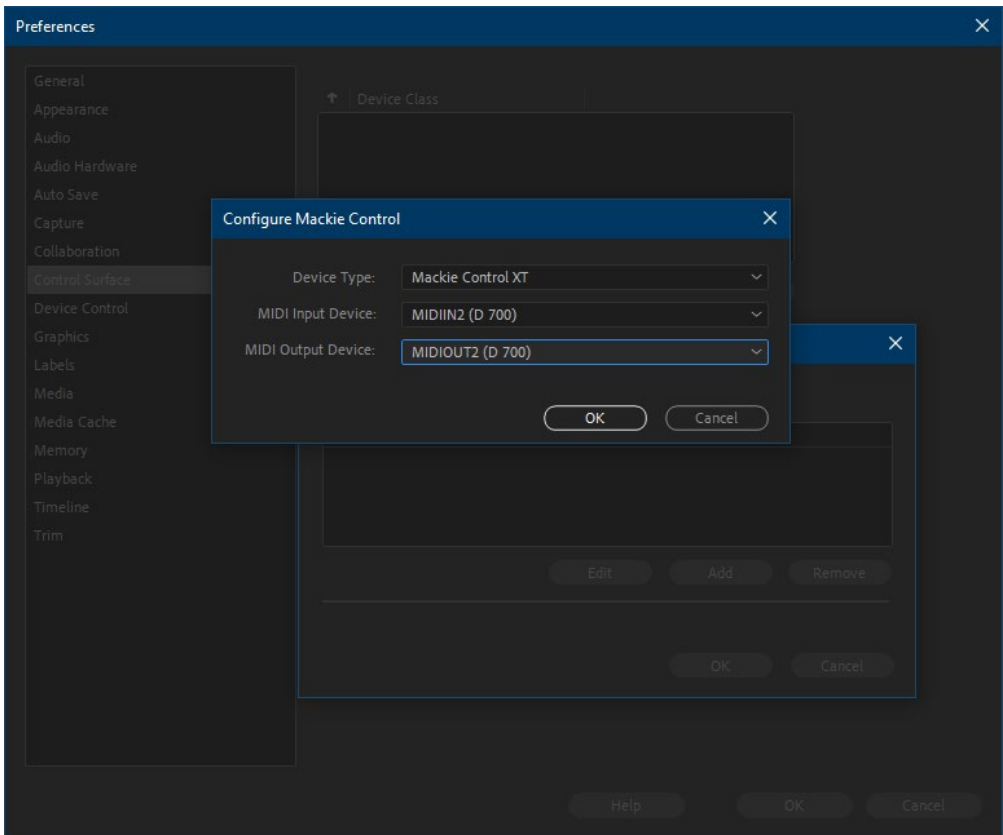
- In the factory preset these are the corresponding keys:

D700	Premiere Pro
Send	F1
FX	F2
Magic *	F3
Volume Click	F4
Metronome	Click
Loop	Loop

Step 6: (optional)

- If you want to connect more than one extension, you should redo step 2 and 3 but select **D700 (2)** as MIDI Input and as MIDI Output and **Mackie Control XT**

If there is only one D700 showing up, you need to enable the extensions first. How you can do that is described in the main manual.



Hints:

- With the knobs **Pan** and **EQ**, you can assign a function to the encoders. With a click on the encoder, you can switch to the next parameter
- **Send** and **FX** are not available here. You can assign other functions to these keys



For more information
visit www.asparion.de