



Mixbus 32C

**D700**

# Mixbus 32C

This guide shows you how to set up the D700 in Mixbus 32C. All pictures provided were taken with Mixbus 32C v9 but it is also applicable to most other Mixbus 32C versions.

All files mentioned in this guide can be found on the USB drive, in the Asparion Configurator installation folder or on our website.

If you are having trouble with anything in this guide, please contact us via our website [www.asparion.de/contact](http://www.asparion.de/contact) and we'll immediately help you.

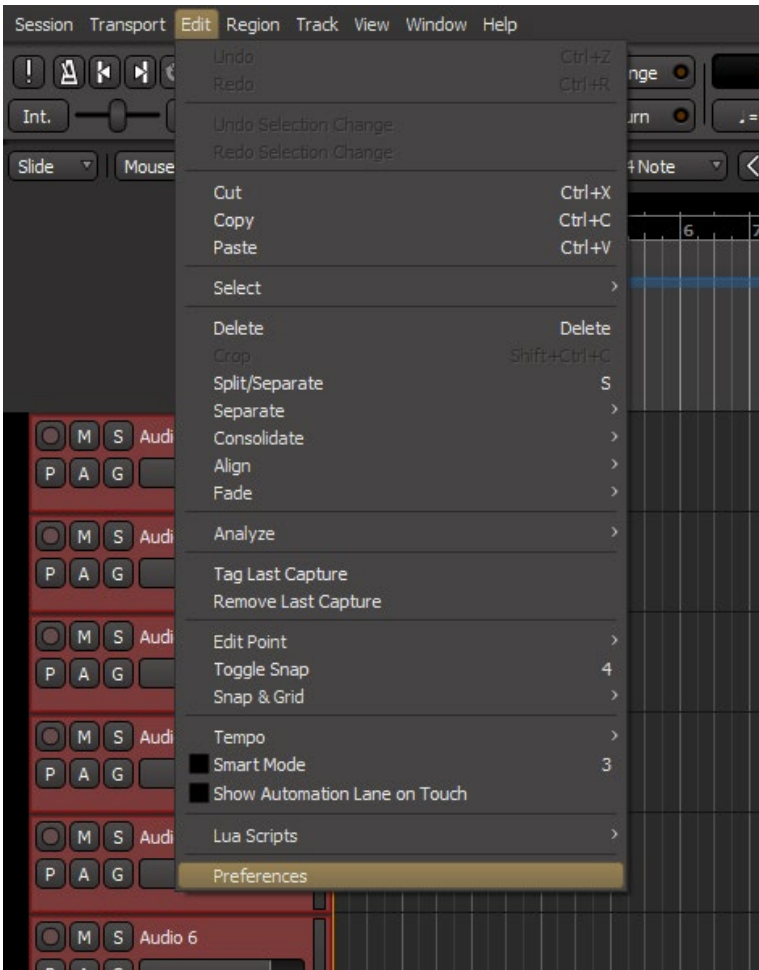
## Step 1:

- Select the Mixbus 32C preset

*How to select a preset is described in the main manual.*

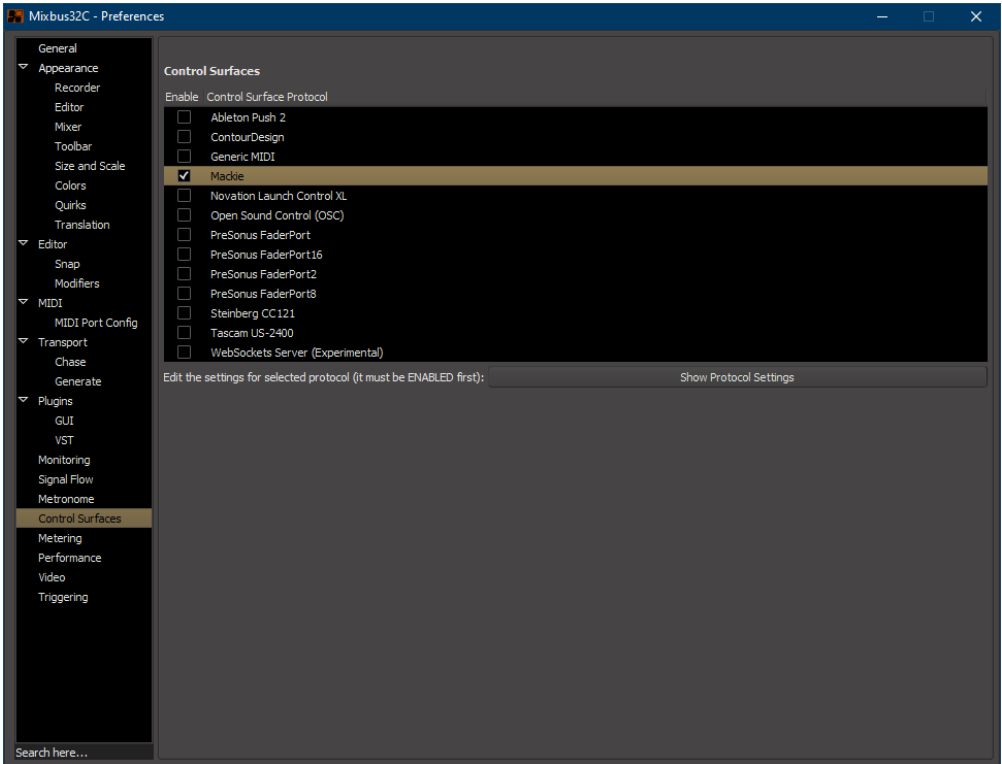
## Step 2:

- Open Mixbus 32C
- Click on **Edit->Preferences**



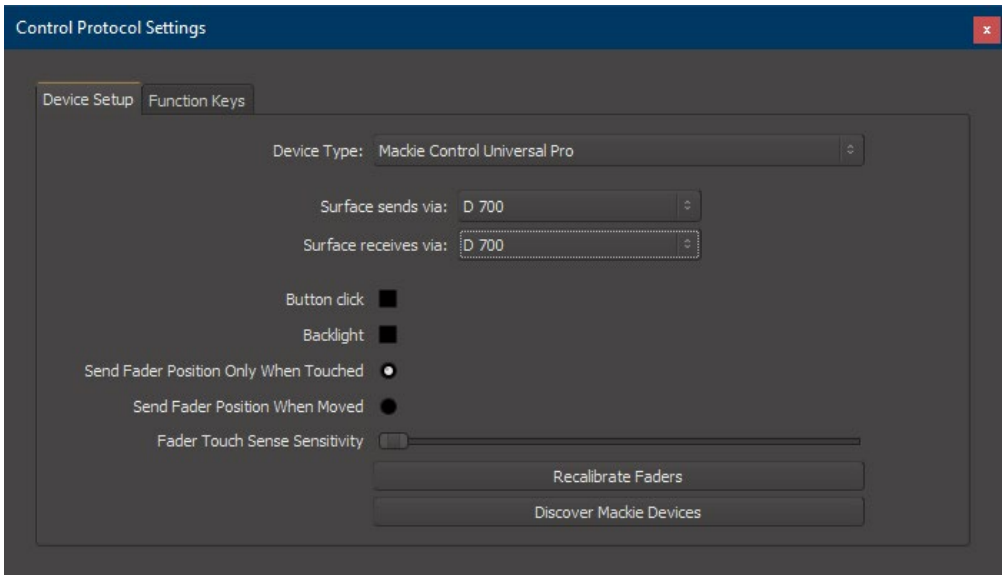
## Step 3:

- Go to **Control Surfaces**
- Check **Mackie**



## Step 4:

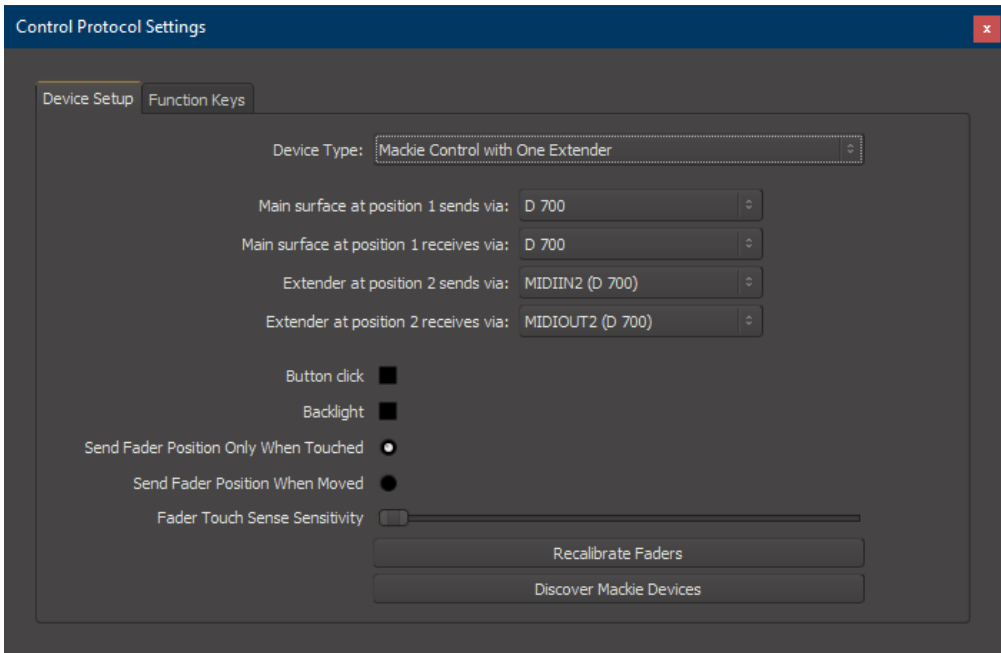
- Click **Show Protocol Settings on Mackie**
- Select **D700** as shown below



## Step 5: (optional)

- If you want to connect more than one extension, go to step 4 and select **Mackie Control with One Extender** (resp. Two Extenders) and select the appropriate Midi inputs as shown below

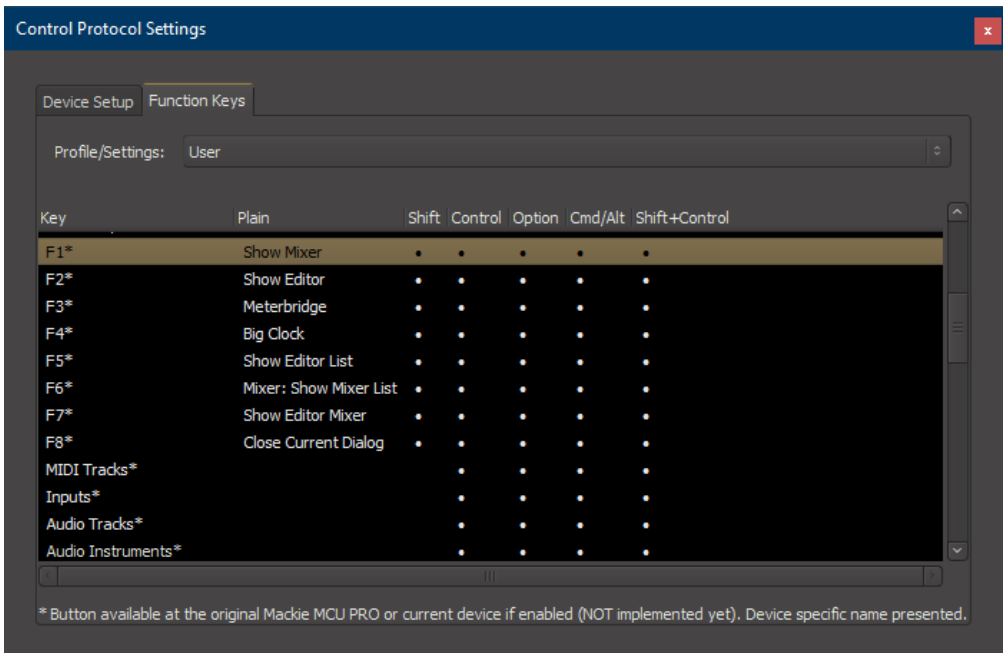
*If there is only one D700 showing up, you need to enable the extensions first. How you can do that is described in the main manual.*



## Step 6: (optional)

- In the window **Function Keys**, it is possible to reassign buttons
- In the factory preset these are the corresponding keys:

D700	Mixbus 32C
Magic *	F1
Volume Click	F3



## Hints:

- Mixbus 32C also contains a Midi-Learn-Function. To use it move the mouse over a control and press Ctrl + Middle mouse button and then operate the control element on the device





For more information  
visit [www.asparion.de](http://www.asparion.de)