



**Manual**

**D700**

# Content

Scope of supply .....	2
Term definition.....	3
Positioning .....	4
Connecting.....	5
Connect elements.....	6
Installation.....	7
Asparion Configurator .....	9
Recommended system requirements .....	9
macOS .....	9
Windows .....	10
Use and possible settings.....	10
Asparion Connector .....	11
Setup.....	11
Operating system controls .....	12
Auto switch presets.....	12
Extensions.....	13
Activate extensions on device .....	13
Activate extensions in DAW program.....	13
Arrange extensions .....	14
Preset.....	15
Choose preset .....	15
Add preset .....	15
Double click.....	16
LED rings / Encoders.....	17
Compatibility .....	18
DAW program .....	18
Operating system .....	18
Expression pedals .....	18
Miscellaneous .....	19
Other questions .....	19
Safety instructions .....	20

## Scope of supply

The following parts are included in the scope of supply respectively:

### D700<sup>FT</sup>

- D700<sup>T</sup>
- USB connection cable C to C
- USB connection cable C to A
- Power supply
- Power cable
- Quickstart guide

### D700<sup>F</sup>

- D700<sup>F</sup>
- Extension link cable short
- Extension link cable long
- Power supply
- Power cable
- 3 connection screws
- Quickstart guide

### D700<sup>S</sup>

- D700<sup>S</sup>
- Quickstart guide

## Term definition

### DAW

Digital Audio Workstation (DAW, DAW program) describes the software that can be controlled with the D700. In most cases this is software for music production but the term is also used here for other similar software like for video or lighting.

### MIDI

Musical Instrument Digital Interface is the interface by which the D700 communicates. Besides the MIDI cables which were widely spread in the past, MIDI commands can also be transmitted over USB like the D700 does. In your DAW program the D700 appears as a normal MIDI device.

### OSC

Open Sound Control (OSC) is a protocol that can transmit commands over the network.

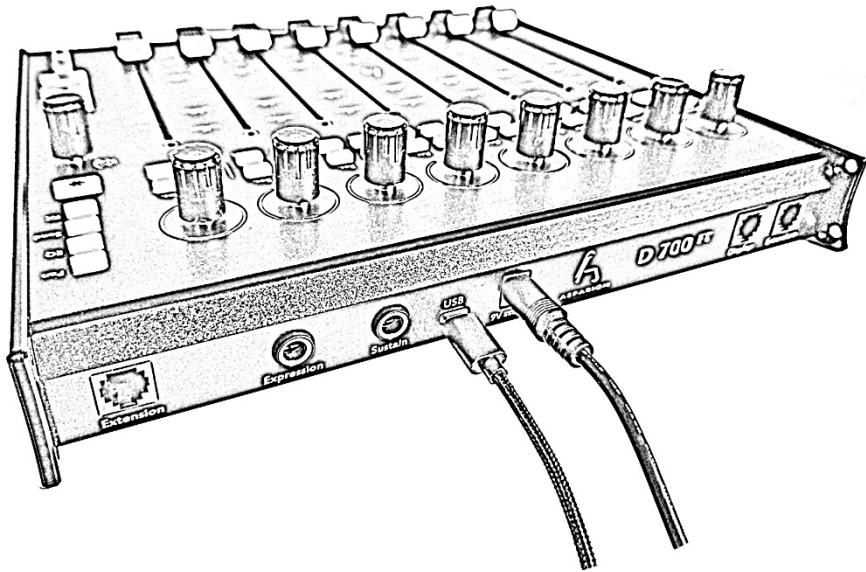
## Positioning

Please note the following hints:

- To allow best functionality you should place the device on a planar surface.
- With the long extensions link cable, it is for example possible to place one part of the device on the left and the other part on the right side of your keyboard. If you do not want that you can screw the elements together with the 3 included screws.

## Connecting

1. First, connect all the elements with the extension link cables as shown in the quick start guides. The order in which you connect the elements or which extension connectors you use does not matter.
2. Afterwards, connect the power supply to the device and plug it in a socket.
3. Finally, connect the USB cable with your computer.



**Attention!** You must never plug in another device in one of the ports.

**Attention!** To connect to an iPhone/iPad you need the Apple Lightning to USB Camera Adapter

## Connect elements

With the 3 included screws you can connect the single elements. The order in which you connect the elements is up to you. There is no need to screw the elements together if you do not wish to.

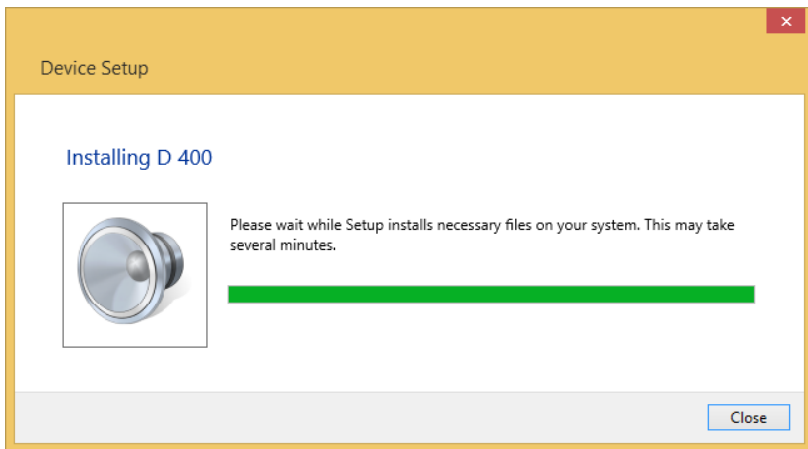
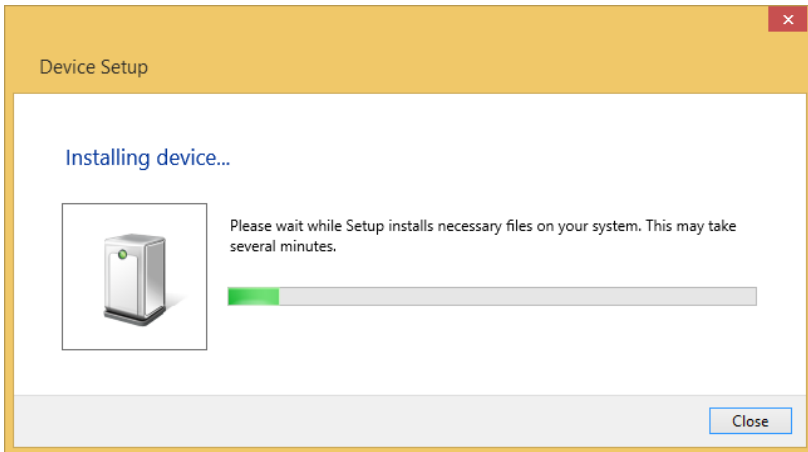
*The required screw driver is a PH1 cross slot. The screws should be tightened only slightly.*

***Attention!*** *You should not put the screws in until all elements are on the same surface. As soon as all elements are connected you must not lift them anymore because there is a risk that the elements break apart.*

## Installation

### Windows

As soon as you plug your device in your Windows computer for the first time, the following dialog will appear:



Please wait for a few minutes until the dialog closes by itself.

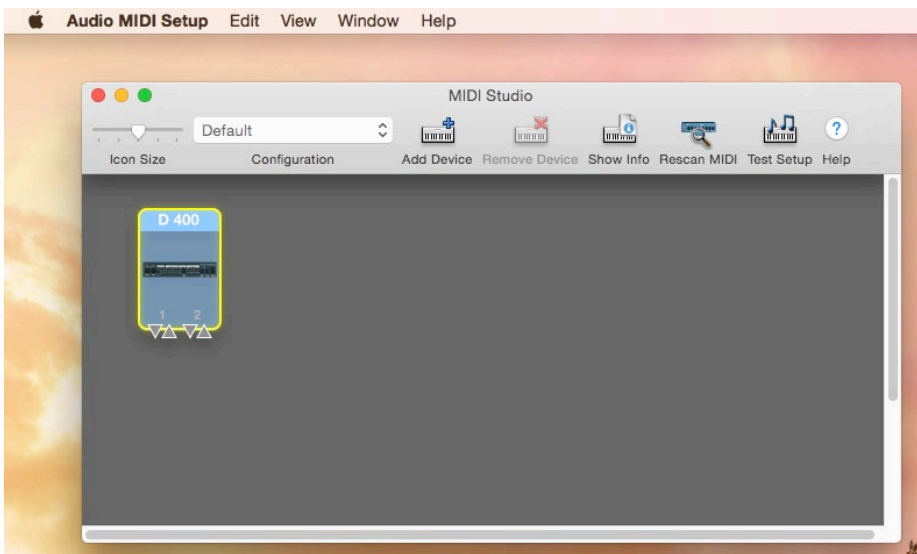
Now your device is ready for use.



## macOS

You can use your device a few seconds after plugging it in. To check if everything is connected correctly, follow these steps:

1. Go to **Applications -> Utilities -> Audio MIDI Setup**
2. In the menu bar click **Window -> MIDI Studio**



## Common

How you use this device in every single DAW program is described in the respective manual which you can find in the same spot as this one.

After plugging in the device you have to restart your DAW program.

# Asparion Configurator

*This program is not necessarily required. With it you can change various options on the device or add support for programs that are not available ex works.*

## Recommended system requirements

- Windows 7, 8, 10, 11 or higher with .Net Framework 7 or macOS 10.11 or higher
- 100MB free disk space
- Intel i3 with 4GB RAM

## macOS

### Installation

Double click on the installation file "Asparion Configurator Installation.dmg" and then on the newly generated folder "Asparion Configurator Installation". In the following window drag the app icon to your programs folder.

Pay attention to the license agreement in the program folder.

*If you see a security warning which doesn't allow you to install or open the app, go to **System Preferences->Security & Privacy** and select **Anywhere** temporarily*

### Uninstallation

To remove this program from your Mac, go to "Applications" and drag the app to the trash.

## Windows

### Installation

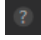
Start the installation file “Asparion Configurator Setup.exe” by double clicking and follow the instructions.

### Uninstallation

To remove this program from your computer, go to “Settings->Add or remove programs” and follow the instructions.

## Use and possible settings

How to use the program is described exactly in the program itself. Just open the program and everything else will fall in place.

Everywhere in the program you can find small question marks: . If you put the mouse over these symbols you will receive detailed information on these settings.

## Asparion Connector

*This program is not necessarily required. With it you can connect the D700 to other programs that do not support midi.*

*For recommended system requirements and installation please refer to the Asparion Configurator.*

The Asparion Connector can transmit all input over the OSC protocol. The OSC protocol is a network protocol that works similarly to the midi protocol. Because the D700 doesn't have an ethernet port this program is required. It will create a virtual ethernet port and translate all messages to and from OSC. For setting up OSC please refer to the separate OSC manual.

Additionally, it is possible to control other things like your smart home or the volume of your operating system and press play and stop in your favorite media player.

The Asparion Connector and Configurator work with each other. In the Asparion Configurator you can change the basic settings of the device. In the Connector you can adjust the actions of each control element.

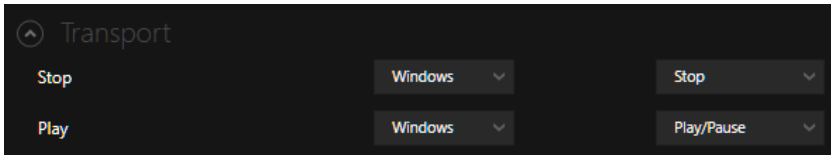
### Setup

To use the Connector with a certain preset, change the mode of that preset to **Connector**. This option can be found in the Configurator in the **Codes** window. This will disable all midi communication of the device.

In case you want to use double clicks or pressed encoder rotates in the Connector, you should activate that in the Configurator first. You can also adjust the screen settings there.

## Operating system controls

All buttons can be used as media keys to control your operating system or favorite media players. To use this functionality, choose your operating system as the functionality of a button and then the desired function.



## Auto switch presets

The Asparion Connector has the ability to automatically choose the right preset. You can find this functionality in the **Options** window. E.g., you can create a preset that controls your operating system when no DAW is active and then automatically switch to the DAW preset when it is started up.

*Please note that the presets of the Asparion Connector are not stored on the device. They are stored on the Computer and can be backed up and distributed with the export/import function.*

## Extensions

### Activate extensions on device

The first D700<sup>F</sup> extension is activated by default. If you want to use more extensions, please follow these steps:

- Keep the three buttons **Pan** **EQ** **Send** pressed for about 5 seconds until both the LED rings (1 and 8) start blinking.
- Now choose how many extensions you want to connect by rotating the left encoder (first, 1 to 8).
- Confirm your selection by clicking the encoder.
- Hereupon you will see the installation dialog as shown in chapter “Installation” again.
- Afterwards you may need to restart your DAW program.

### Activate extensions in DAW program

How to activate more than one extension is described in the respective manual.

In general, each extension will be displayed with a name like this as a separate MIDI device:

- In Windows:
  - MIDIIN2 (D 700), MIDIOUT2 (D 700)
  - MIDIIN3 (D 700), MIDIOUT3 (D 700)
  - MIDIIN4 (D 700), MIDIOUT4 (D 700)
  - MIDIIN5 (D 700), MIDIOUT5 (D 700)
  - MIDIIN6 (D 700), MIDIOUT6 (D 700)
  - MIDIIN7 (D 700), MIDIOUT7 (D 700)
  - MIDIIN8 (D 700), MIDIOUT8 (D 700)

- In macOS:
  - D 700 Port 2
  - D 700 Port 3
  - D 700 Port 4
  - D 700 Port 5
  - D 700 Port 6
  - D 700 Port 7
  - D 700 Port 8

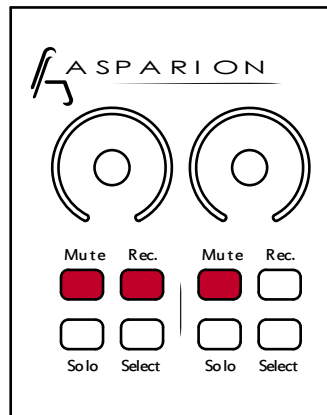
The extension can usually be activated in your DAW program the same way as your original device.

*macOS: If you can't see another extension after following the instructions you should follow these steps:*

1. *Unplug the device from your Mac*
2. *Go to **Applications** -> **Utilities** -> **Audio MIDI Setup***
3. *In the menu bar click **Windows** -> **MIDI Studio***
4. *Select **D700** and **Remove device***
5. *Restart the Mac*
6. *Plug the device back in*

## Arrange extensions

- Plug only the power supply in the extension
- Keep the three buttons marked in red pressed for about 5 seconds until the eight "Select" buttons start blinking.
- Now you can assign a position number to every extension by clicking the equivalent „Select“ button. The button on the left leads to number one etc. You should make sure that you use every number only once!
- After that you can connect all extensions with their link cables to the previous ones.



## Preset

Through the preset you can define how the device behaves. Thereby it is possible to use the device with a lot of different programs. The single presets can be adjusted with the Asparion Configurator.

### Choose preset

To choose a preset, keep the three buttons **Pan** **EQ** **Send** pressed for about 5 seconds until both the LED rings (1 and 8) start blinking. Now select which preset you want to use by rotating the right encoder (last). Confirm your selection by clicking the encoder. Which preset is saved to which number can be seen on the included sheet or if you have changed anything you can see it in the Configurator.

### Add preset

If you are missing a preset ex works you can add this with the Configurator. To do that open the Configurator and choose a preset which you want to override. Then click on **Misc** and choose **Import**.



## Double click

It is possible to activate a double click on every push button. If you press the button two times in a short period of time you can execute a different action than by pressing only one time. A double click on the encoders is also possible.

The labeling on the device shows the action for a double click in small letters and the action for a single click in big letters.

*Attention: If you activate the double click there will be a small delay on each single click!*

## LED rings / Encoders

With the Configurator you can change the appearance of the LED rings.

You can rotate the encoders in normal or in pressed state. In pressed state they are sending a different midi command.

*Attention: This function is not activated for every DAW program by default. You can activate it, if necessary, with the Configurator.*

## Compatibility

### DAW program

To ensure complete compatibility with a DAW program the manufacturer has to directly support the device. Unfortunately, many software manufactures do not take care of this at all or it takes a lot of time. That's why there might be a few small compatibility issues and it may be possible that some functions are not supported. The exact compatibility list can be viewed on our website.

*Normally the compatibility is not an issue if the program supports configuration of all single keys and encoders. Problems may arise if the program only supports a few specific devices and does not allow any configuration beyond that.*

*However, many VST plugins support remote control trough MIDI controllers. This function is independent of the actual DAW.*

### Operating system

This device uses the standardized MIDI USB protocol. Therefore, it is in theory compatible with every operating system and should work without any problem, e.g. Windows and Mac OS. However, the not necessarily required software "Asparion Configurator" and "Asparion Connector" is only available for some specific operating systems. A list of all systems can be viewed on our website.

### Expression pedals

The device is compatible with most expression pedals. Many pedals have a built-in switch with which the connector pin assignment can be changed. With all other pedals you should check that the pedal is described as compatible to Yamaha or Korg.

## Miscellaneous

All trademarks and brand names mentioned in connection to this device are property of the respective companies.

Whenever the word "Mackie" is mentioned in soft- or hardware in any way it is supposed to describe the compatibility to Mackie.

Asparion is not liable for any damage on soft- or hardware or financial losses that arise from using one of our devices or programs.

## Other questions

If you have questions that are not answered in this manual, please do not hesitate to contact us. We will solve your problem asap.

## Safety instructions

Never use this device unattended.

Never get into a position in which you could harm yourself with the device.

If the device does not function properly anymore, immediately remove all cables and have your device checked.

Keep the device out of reach for children.

Do not open the device. There is danger of electric shock.



For more information  
visit [www.asparion.de](http://www.asparion.de)