



LV1

D700

LV1

This guide shows you how to set up the D700 in LV1. All pictures provided were taken with LV1 14.9 but it is also applicable to most other LV1 versions.

All files mentioned in this guide can be found on the USB drive, in the Asparion Configurator installation folder or on our website.

If you are having trouble with anything in this guide, please contact us via our website www.asparion.de/contact and we'll immediately help you.

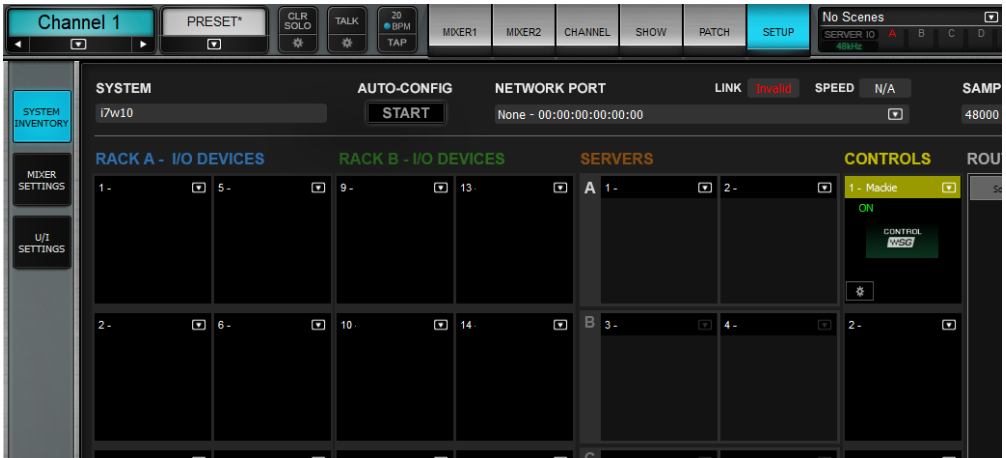
Step 1:

- Select the LV1 preset

How to select a preset is described in the main manual.

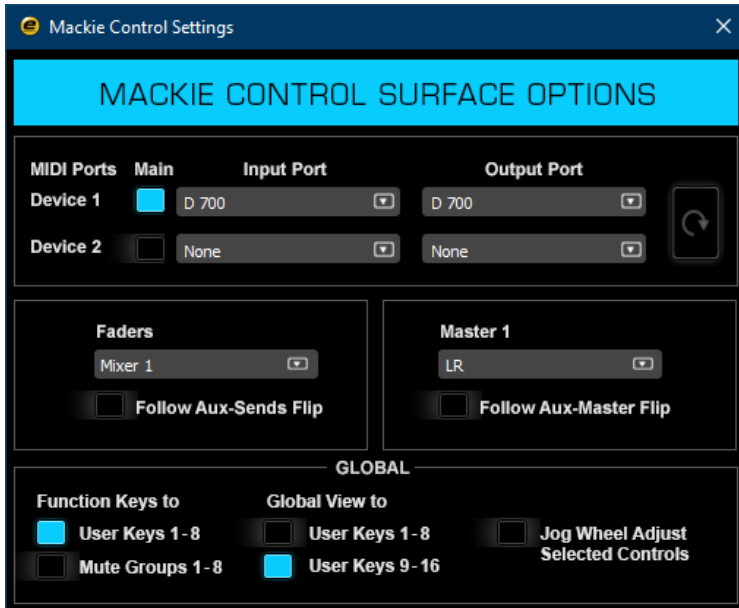
Step 2:

- Open LV1
- Click on **SETUP->SYSTEM INVENTORY**
- Add a **Mackie** to **CONTROLS**



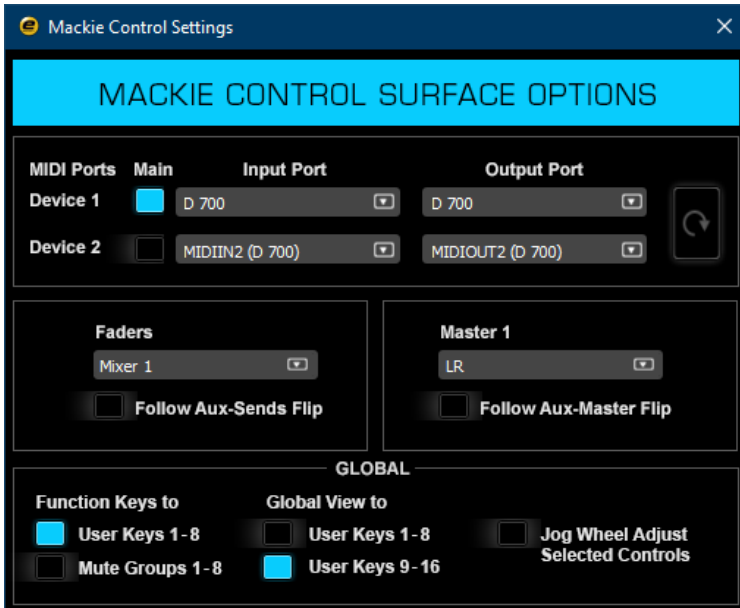
Step 3:

- Go to **Settings** and select **D700** as **Device 1**
- Check **Function Keys to User Keys 1-8**



Step 4: (optional)

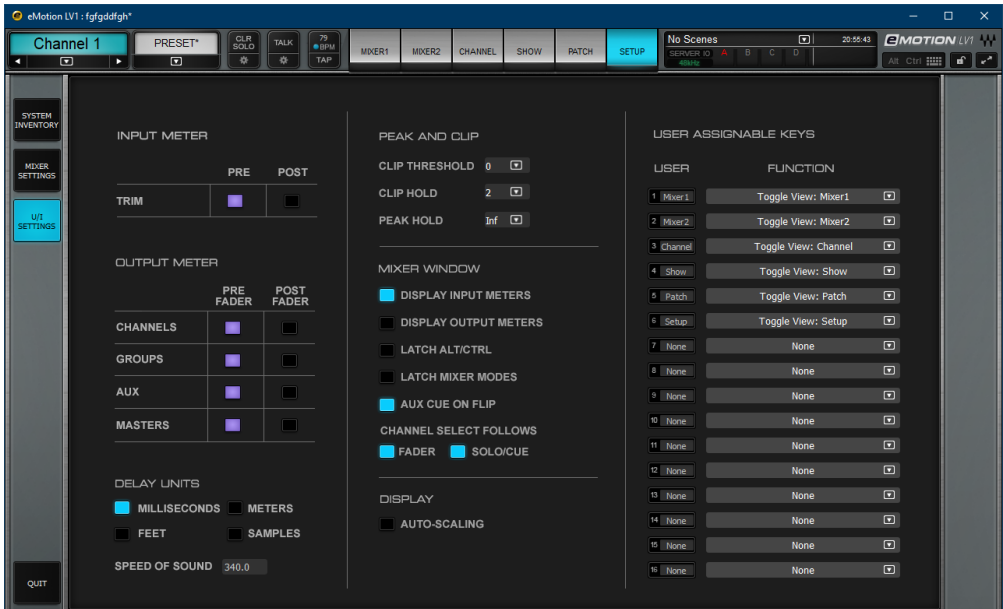
- If you want to connect more than one extension, select **D700** also as **Device 2**
If there is only one D700 showing up, you need to enable the extensions first. How you can do that is described in the main manual.



Step 5: (optional)

- Under **Setup->U/I Settings** you can adjust the key assignments of the D700
- In the factory preset these are the corresponding keys:

D700	LV1
Magic *	1
Metronome	2
Loop	3
Record	4
Play	5
Stop	6



Hints:

- With the knobs **Pan, EQ, Send** and **FX** you can assign a function to the encoders
- In the EQ mode, click a freq encoder to change the mode and a gain encoder to turn on/off
- In Send mode a click activates/deactivates the respective channel
- In the FX mode the encoders control the selected effect of the selected track
- With a double click on the arrow keys, you can switch between the encoder pages
- A click on the master volume encoder mutes the master output
- More instructions can be found in the “eMotion LV1 Tutorial 6.1” and the following



For more information
visit www.asparion.de