



Daslight

**D700**

# Daslight

This guide shows you how to set up the D700 in Daslight. All pictures provided were taken with Daslight 5 but it is also applicable to most other Daslight versions.

All files mentioned in this guide can be found on the USB drive, in the Asparion Configurator installation folder or on our website.

If you are having trouble with anything in this guide, please contact us via our website [www.asparion.de/contact](http://www.asparion.de/contact) and we'll immediately help you.

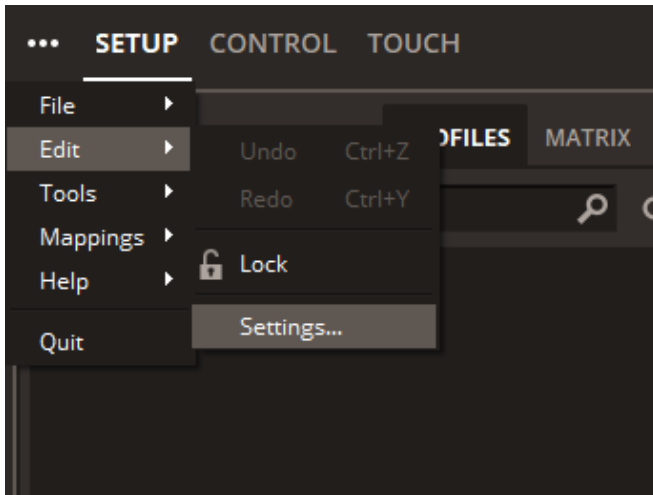
## Step 1:

- Select the Midi CC preset

*How to select a preset is described in the main manual.*

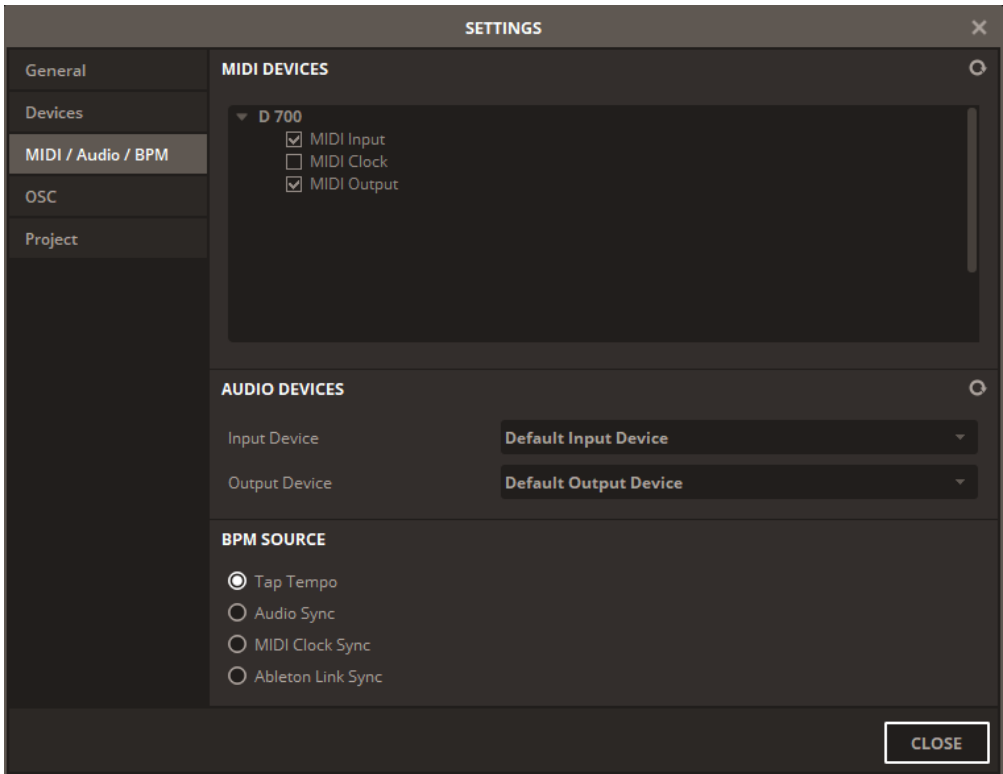
## Step 2:

- Open Daslight
- Click on ...->Edit->Settings...



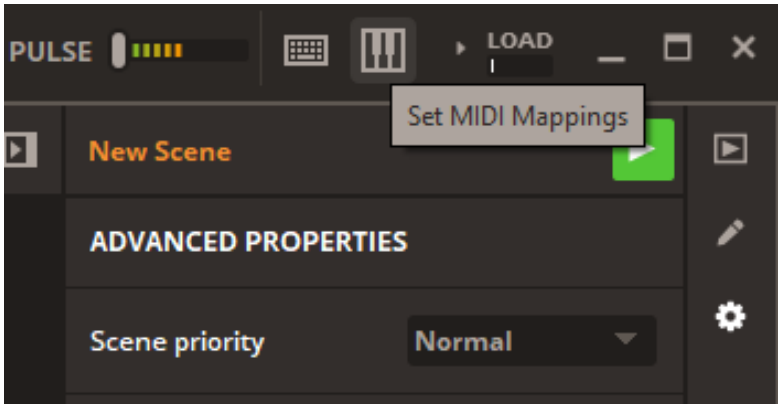
## Step 3:

- Go to **MIDI**
- Check **MIDI Input** and **MIDI Output** of D700



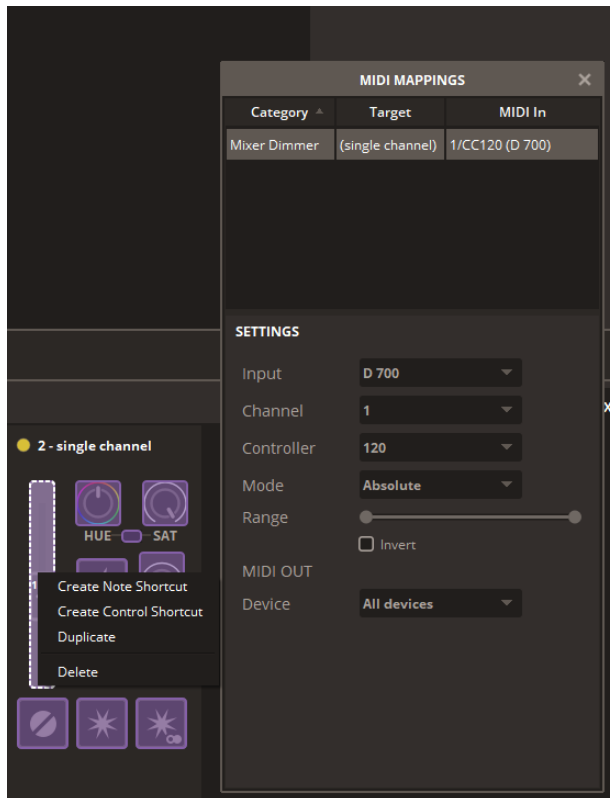
## Step 4:

- At the top right corner press **Set MIDI Mappings**



## Step 5:

- Right click on the highlighted control that you want to bind to the D700 and press **Create Note/Control Shortcut**
- Then move a Fader, rotate an encoder, or click a button to assign it to the selected element



## Hints:

- When connected properly the faders will move with the controls in the program, the led rings will show feedback and the buttons will light up



For more information  
visit [www.asparion.de](http://www.asparion.de)