



Cubase / Nuendo

D700

Cubase / Nuendo

This guide shows you how to set up the D700 in Cubase. All pictures provided were taken with Cubase 12 but it is also applicable to most other Cubase and Nuendo versions.

All files mentioned in this guide can be found on the USB drive, in the Asparion Configurator installation folder or on our website.

If you are having trouble with anything in this guide, please contact us via our website www.asparion.de/contact and we'll immediately help you.

Step 1:

- Select the Cubase preset

How to select a preset is described in the main manual.

1

Step 2:

- Extract and copy the folder "Asparion" to Cubase

Windows:

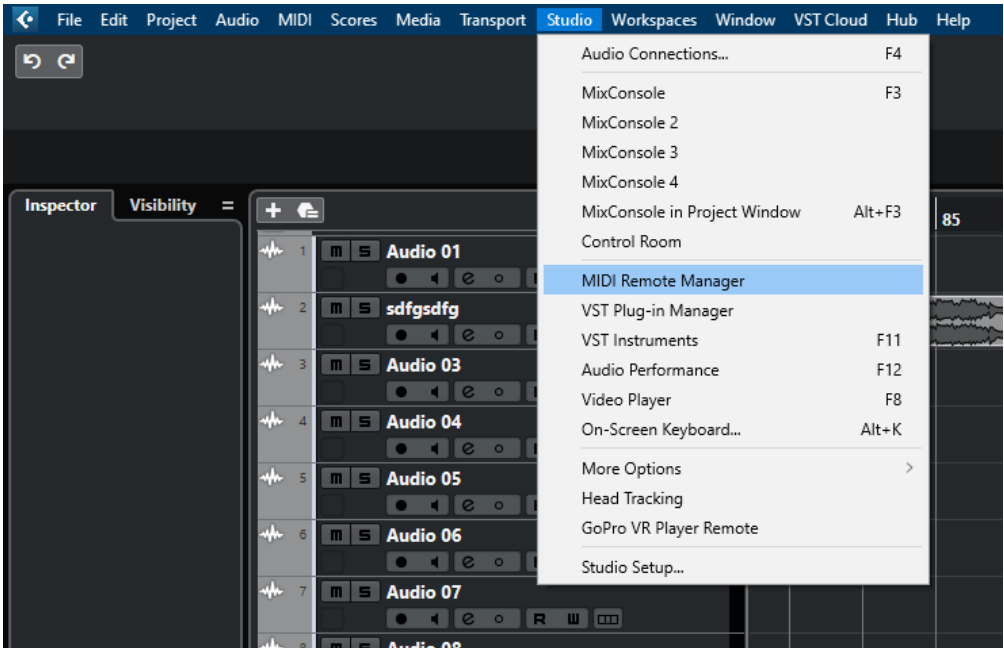
Documents\Steinberg\Cubase\MIDI Remote\Driver Scripts\Local\

Mac:

Documents/Steinberg/Cubase/MIDI Remote/Driver Scripts/Local/

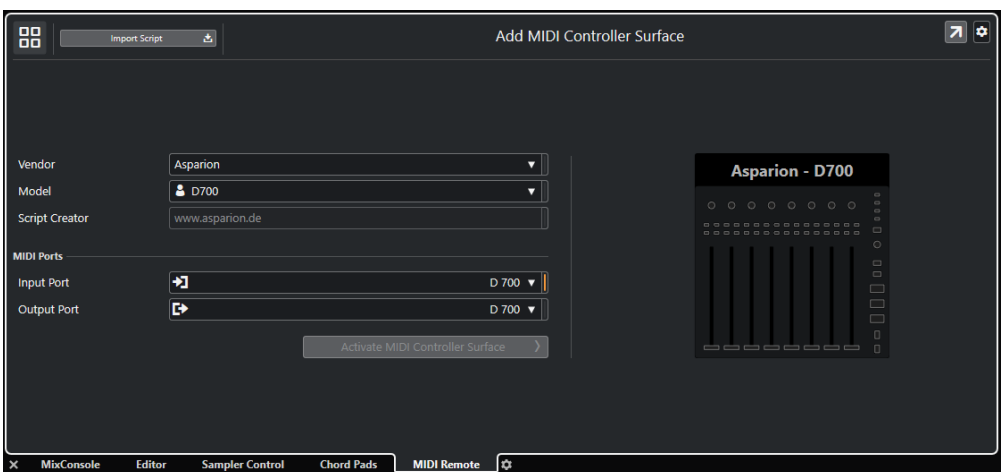
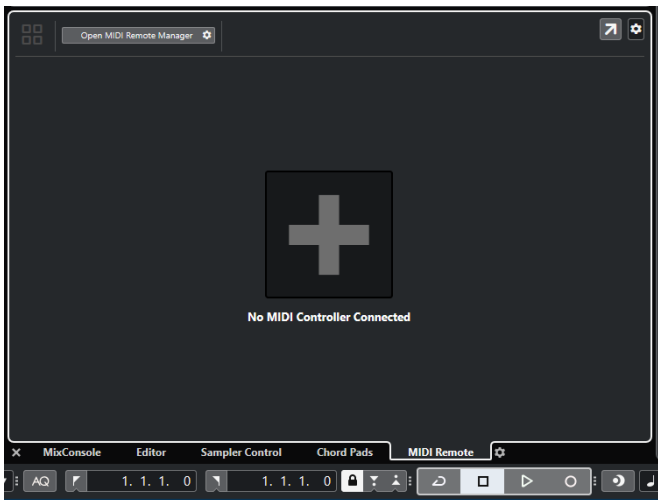
Step 3:

- Open Cubase
- Click on **Studio-> MIDI Remote Manager...**



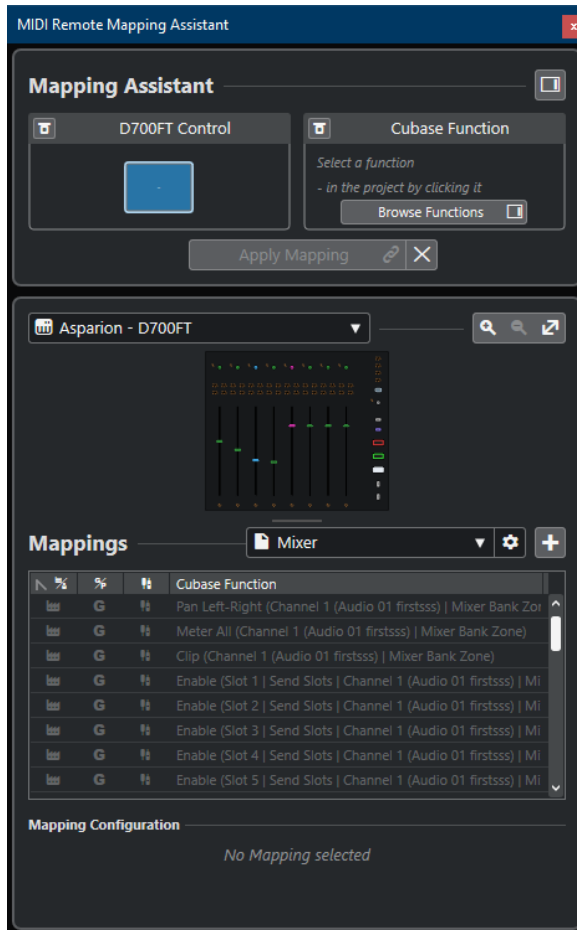
Step 4:

- Press the **+** sign and add **Asparion D700**
 - Select **D700** as Input and as Output as shown below
 - Click on **Activate MIDI Controller Surface**
- If you are lucky Cubase will do all that automatically.*



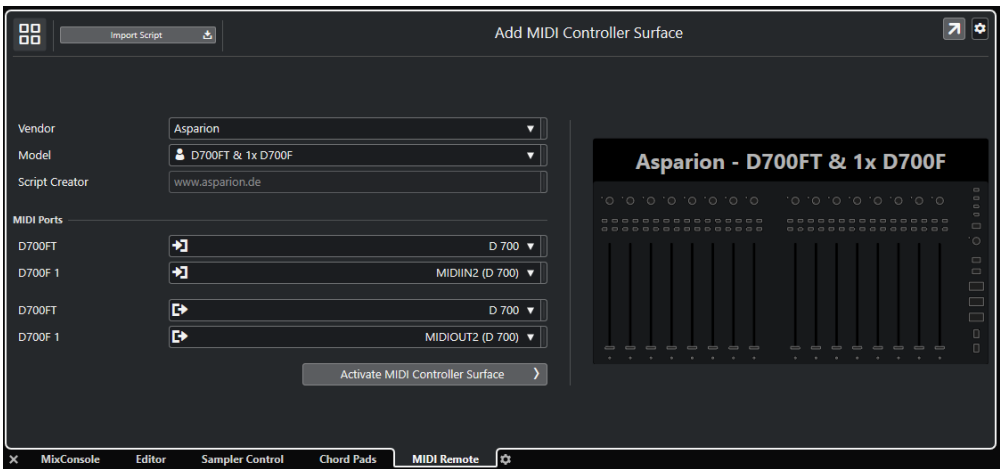
Step 5: (optional)

- If you want to change key assignments, have a look at the **MIDI Remote Mapping Assistant in Cubase**



Step 6: (optional)

- If you want to connect more than one extension, you should go back to step 4 but select **D700FT + 1xD700F** etc. and the ports as shown below
If there is only one D700 showing up, you need to enable the extensions first. How you can do that is described in the main manual.



Hints:

- With the knobs **Pan**, **EQ**, **Send** and **FX** you can assign a function to the encoders. In Cubase **FX** is used for the **Quick Controls**
- A click on a pan encoder resets the value to center
- A click on a send or eq encoder activates/deactivates their respective channel
- The color of the encoders is based on the color of the connected track



For more information
visit www.asparion.de