



Studio One

D400

D400^T

D400^F

Studio One

This guide shows you how to set up the D400 in Studio One. All pictures provided were taken with Studio One 3 but it is also applicable to most other Studio One versions.

All files mentioned in this guide can be found on the USB drive, in the Asparion Configurator installation folder or on our website.

If you are having trouble with anything in this guide, please contact us via our website www.asparion.de/contact and we'll immediately help you.

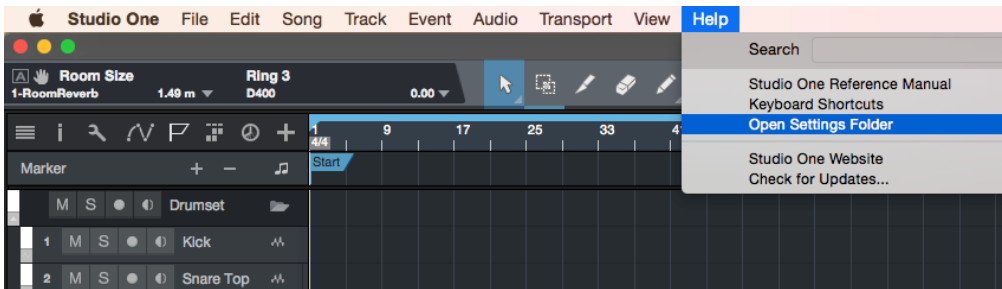
Step 1:

- **Select the Studio One preset**

How to select a preset is described in the main manual.

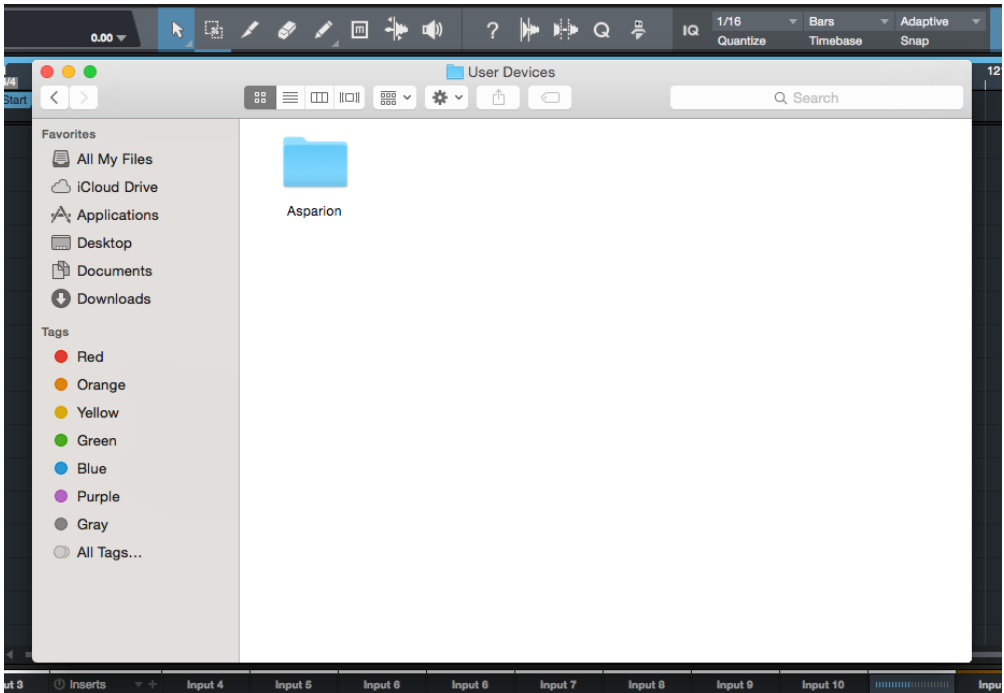
Step 2:

- Open Studio One
- Click on **Help->Open Settings Folder**



Step 3:

- Copy the contents of the file **Studio One User Device D400.zip** to the folder **User Devices**

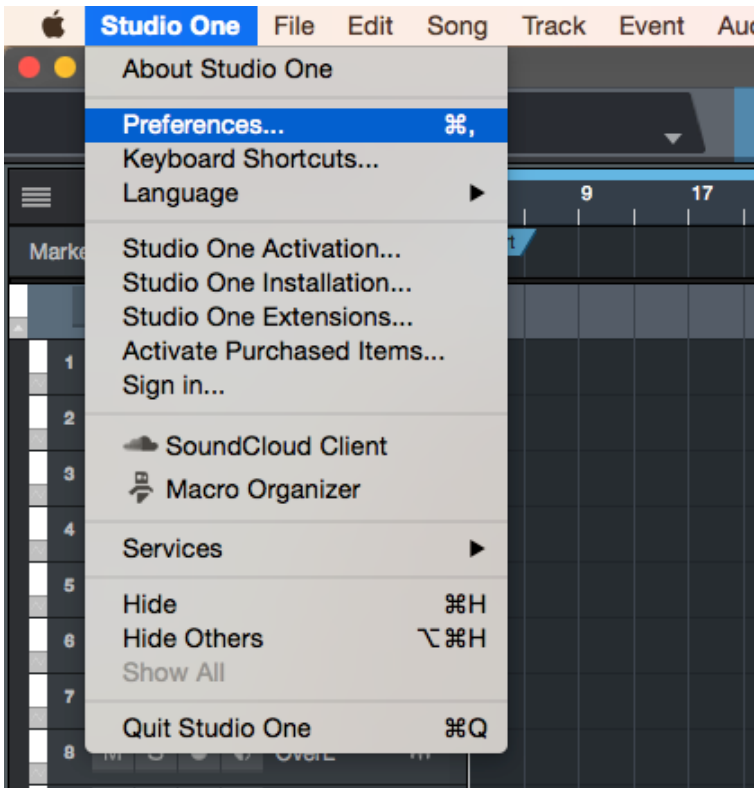


- Now close Studio one

If there is no folder named "User Devices" you should create one first

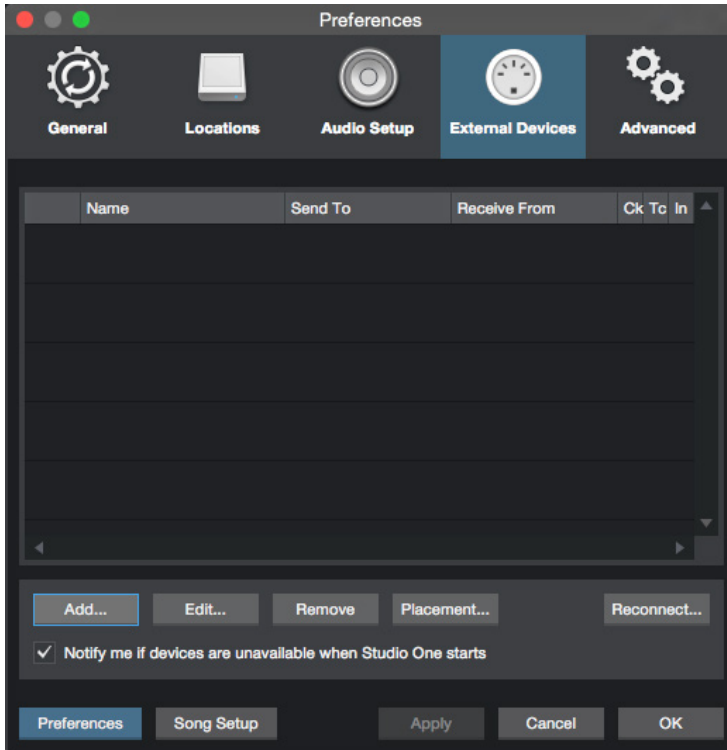
Step 4:

- Open Studio One again
- Click on **Studio One->Preferences...**



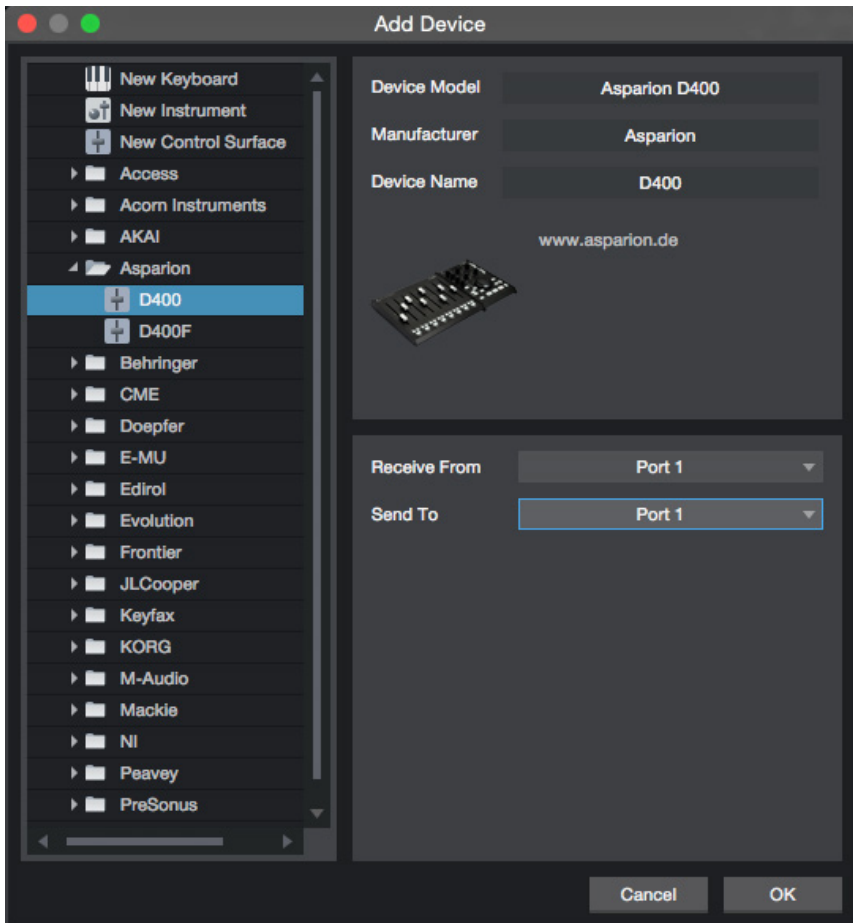
Step 5:

- Go to **External Devices**
- Click **Add...**



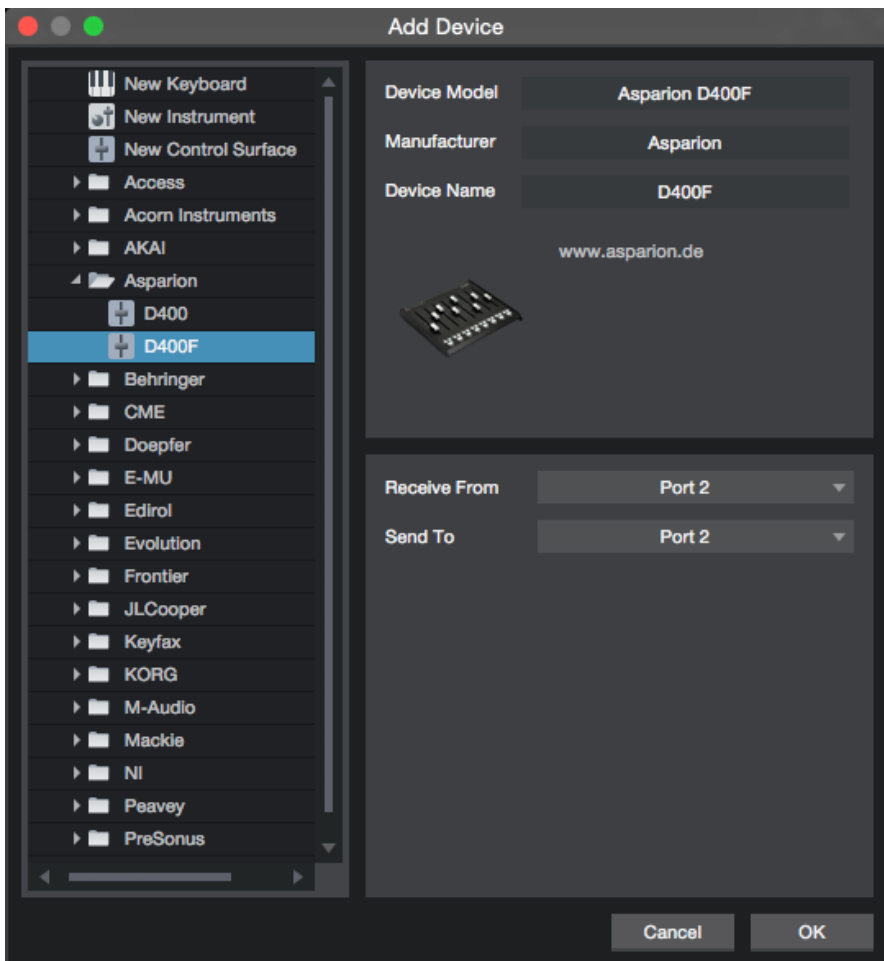
Step 6:

- Select **Asparion D400** from the list
- Select **D400 Port 1 (resp. D400)** as shown below
- Click **OK**



Step 7: (optional)

- If you want to connect more than one extension, you should redo step 5 and 6 but select **D400 Port 2 (resp. D400(2))** and **Asparion D400F**
If there is only one D400 showing up, you need to enable the extensions first. How you can do that is described in the main manual.



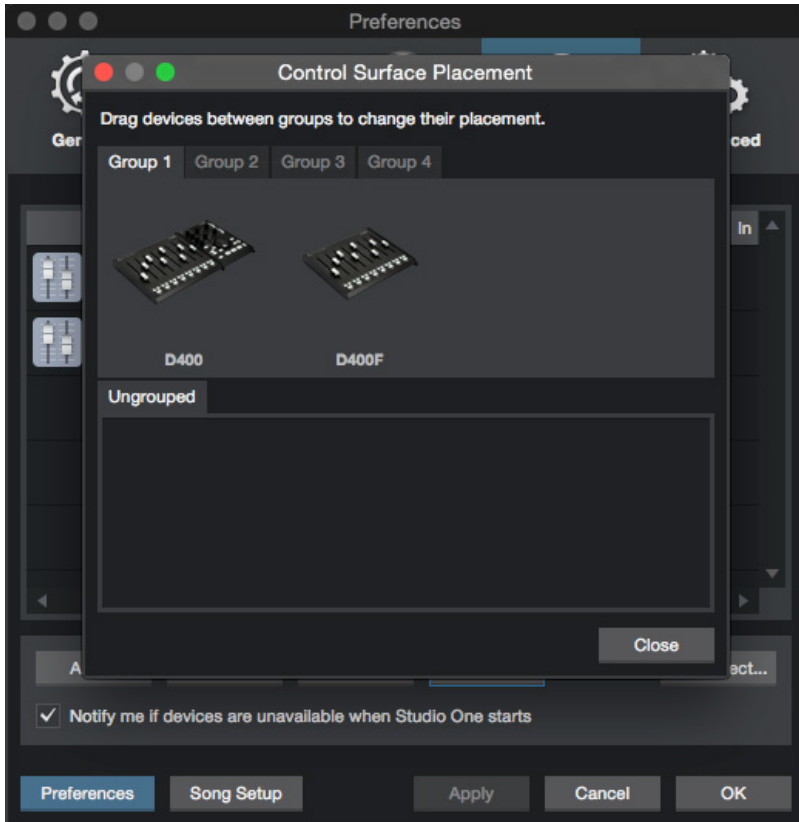
Step 8: (optional)

- Go to **Placement...**



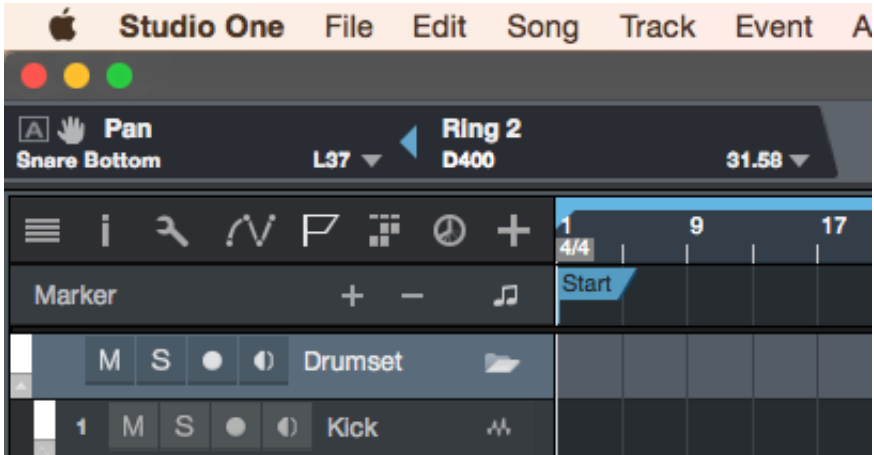
Step 9: (optional)

- Group all devices in the desired order



Step 10: (optional)

- If you want to use all keys, you need to assign them first. To do that, rotate an encoder on the D400 and afterwards one in Studio One. With the blue arrow you can connect them



10

- A yellow arrow connects in an active window



- In addition to that it is possible to connect elements in the **External Devices** window via right click and **Assign Command...**



If you are having trouble with this, you should have a look at the manual of your DAW.



For more information
visit www.asparion.de