



Premiere Pro

D400

D400^T

D400^F

Premiere Pro

This guide shows you how to set up the D400 in Premiere Pro. All pictures provided were taken with Premiere Pro CC 2014 but it is also applicable to most other Premiere Pro versions.

All files mentioned in this guide can be found on the USB drive, in the Asparion Configurator installation folder or on our website.

If you are having trouble with anything in this guide, please contact us via our website www.asparion.de/contact and we'll immediately help you.

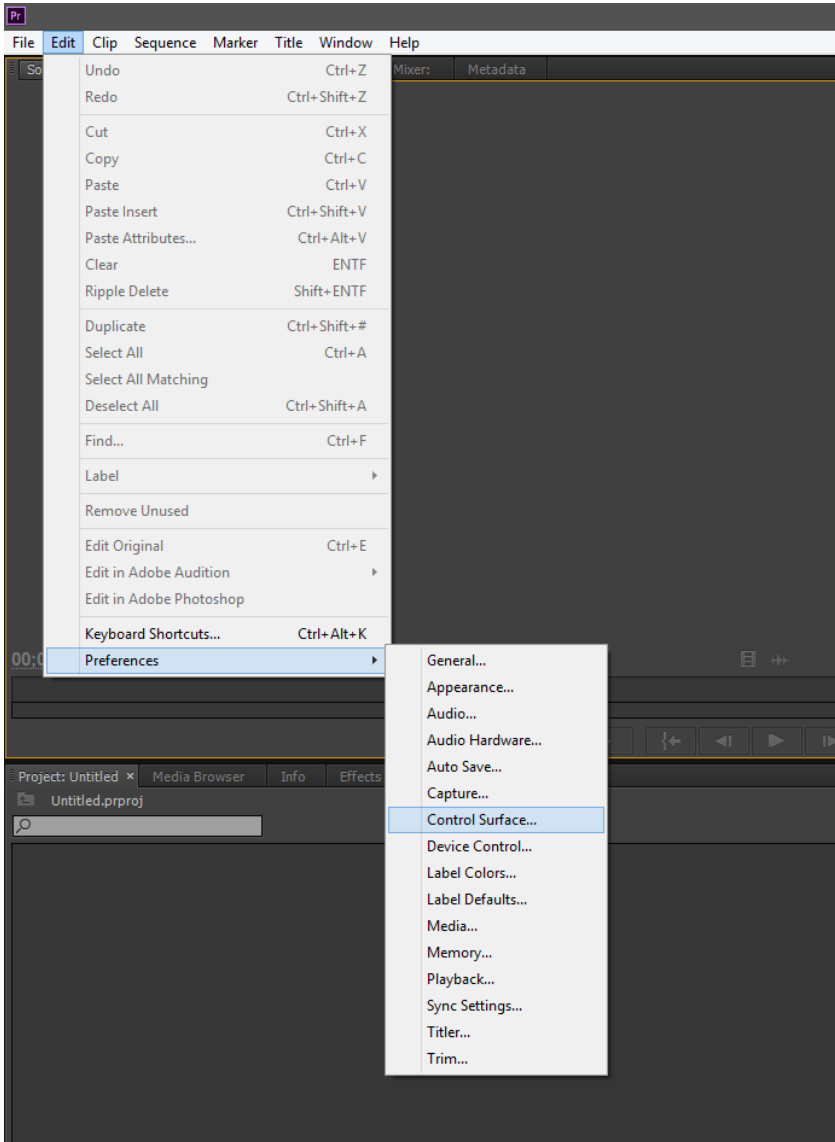
Step 1:

- **Select the Premiere Pro preset**

How to select a preset is described in the main manual.

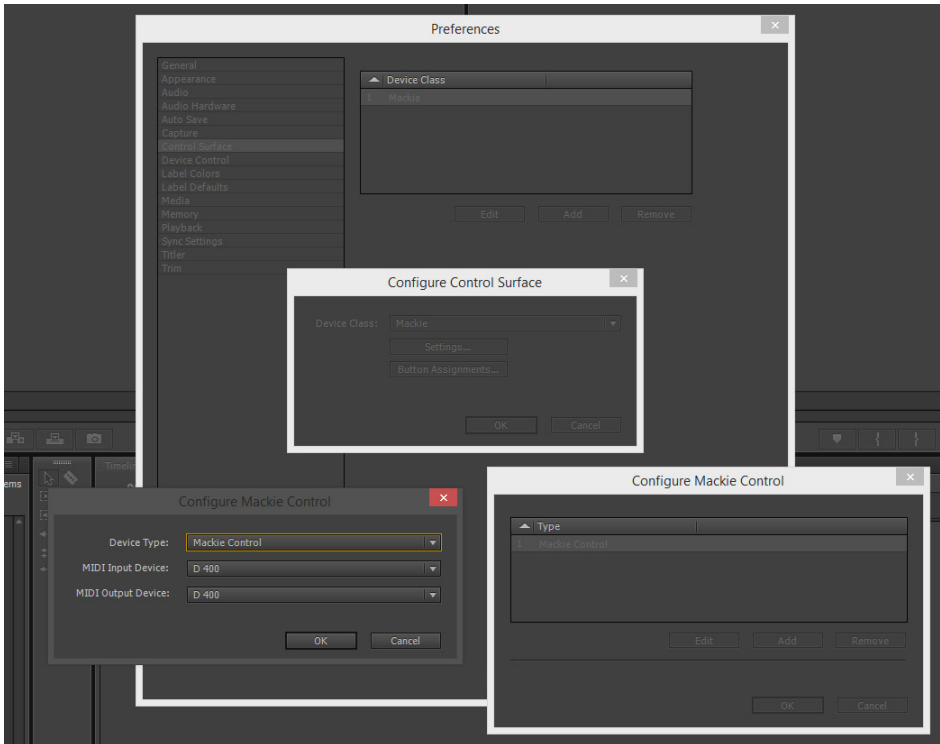
Step 2:

- Open Premiere Pro
- Click on **Edit->Preferences->Control Surface...**



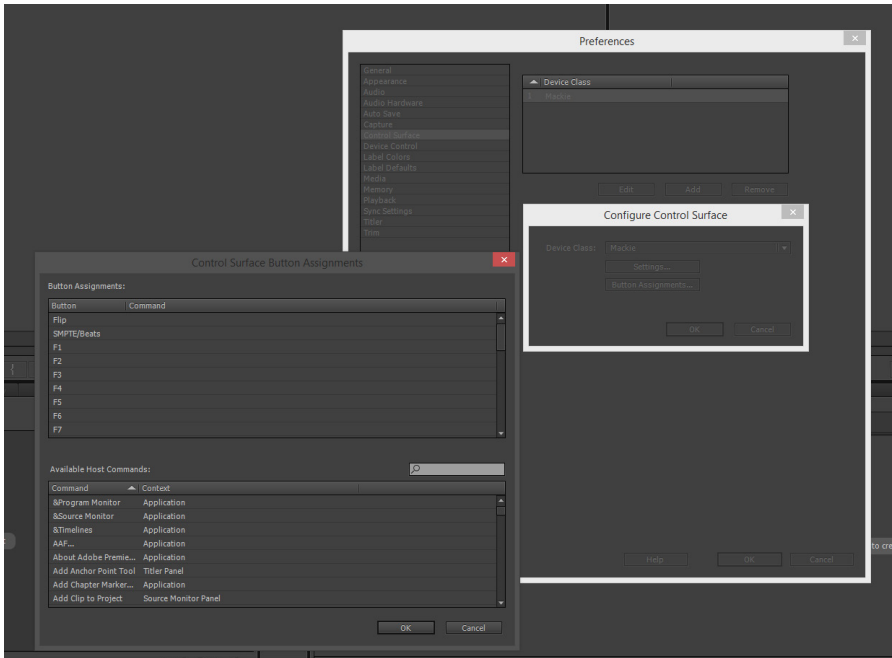
Step 3:

- Press **Add** and select **Mackie**
- Press **Settings** and **Add** and select **Mackie Control** and **D400**



Step 4: (optional)

- In the **Button Assignments** window you can select what your buttons should do



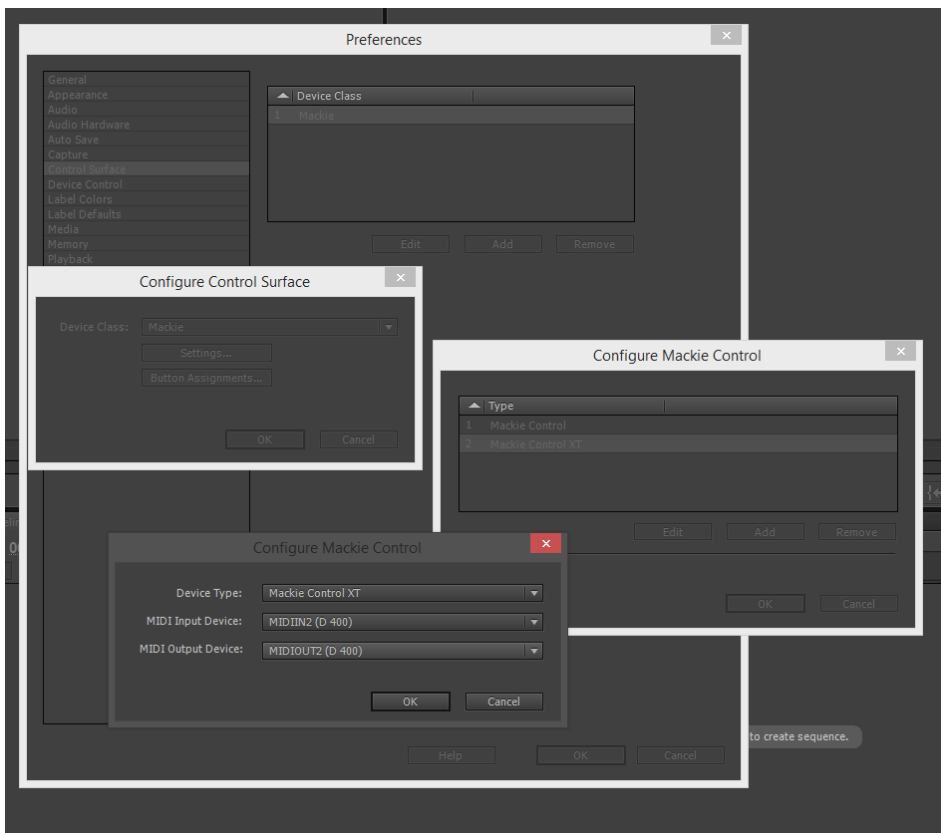
- In the factory preset these are the corresponding keys:

D400	Audition
1-8 (Double click)	F1-F8
Shift	Shift
Metronome	Click
Loop	Loop
assignable 1	Marker
assignable 2	Nudge
*	Save

Step 5: (optional)

- If you want to connect more than one extension, you should redo step 2 and 3 but select **D400 (2)** as MIDI Input and as MIDI Output and **Mackie Control XT**

If there is only one D400 showing up, you need to enable the extensions first. How you can do that is described in the main manual.





For more information
visit www.asparion.de