



Logic

D400

D400^T

D400^F

Logic

This guide shows you how to set up the D400 in Logic. All pictures provided were taken with Logic Pro X but it is also applicable to most other Logic versions.

All files mentioned in this guide can be found on the USB drive, in the Asparion Configurator installation folder or on our website.

If you are having trouble with anything in this guide, please contact us via our website www.asparion.de/contact and we'll immediately help you.

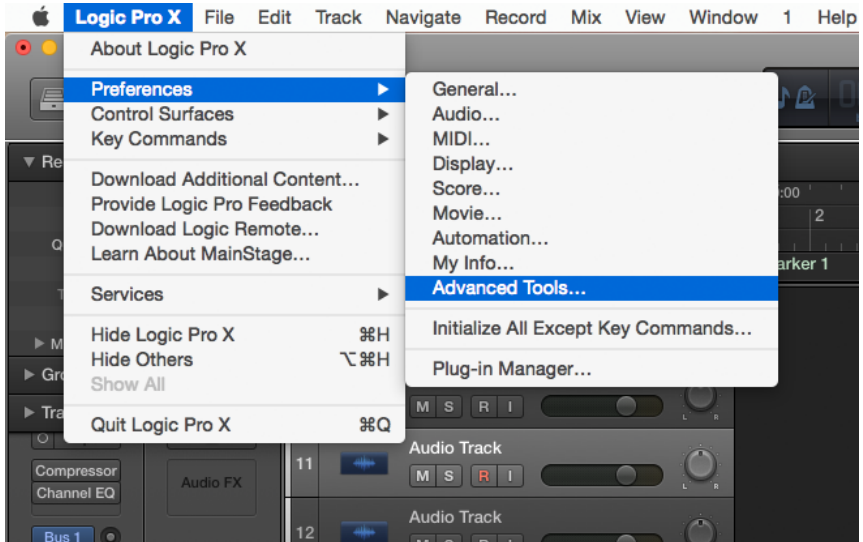
Step 1:

- Select the Logic preset

How to select a preset is described in the main manual.

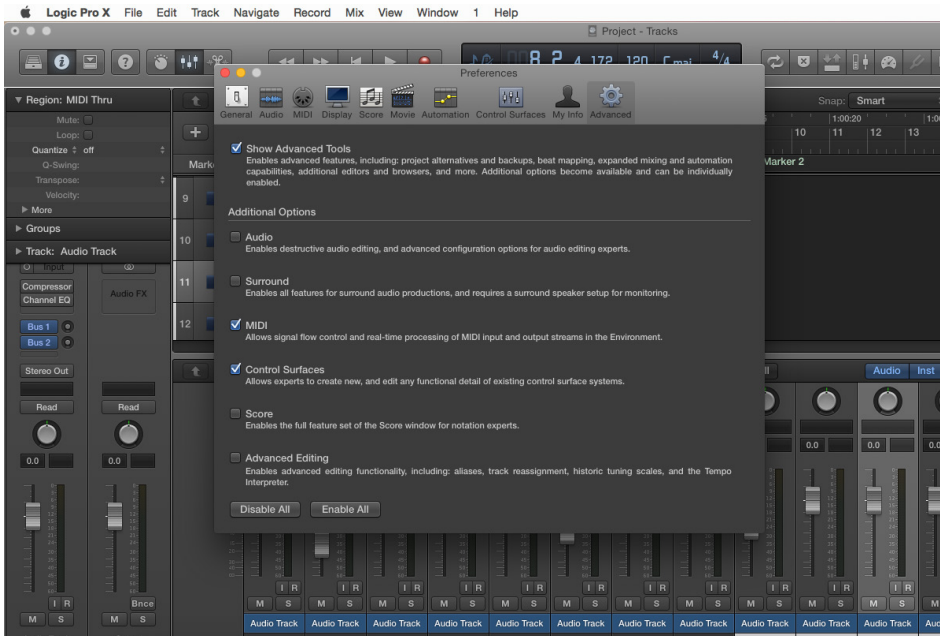
Step 2:

- Open Logic
- Click on **Logic->Preferences->Advanced Tools...**



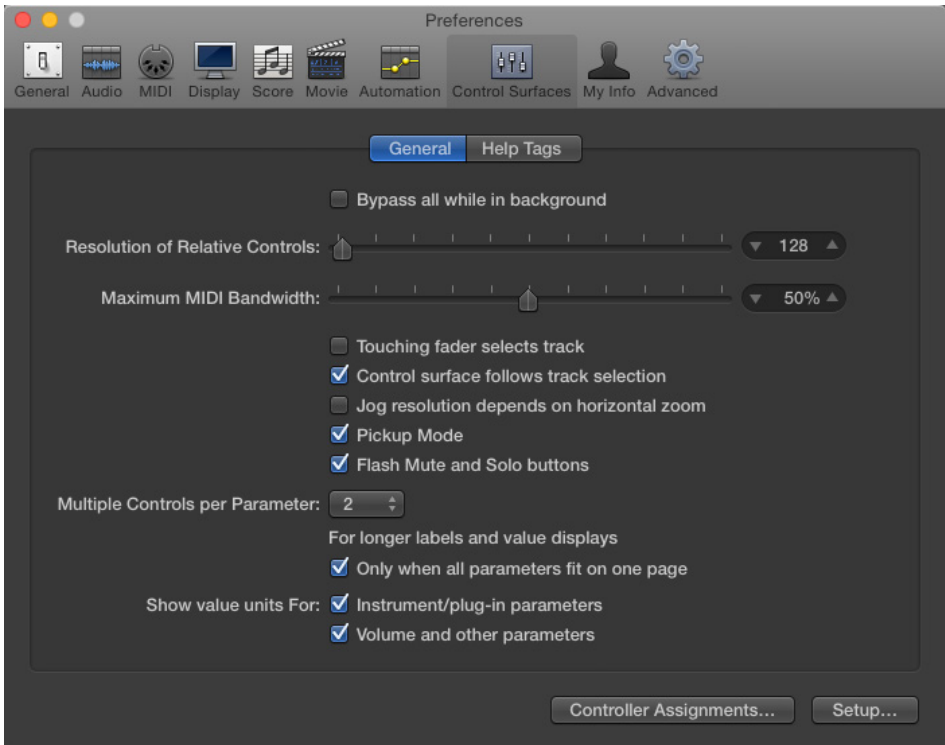
Step 3:

- Check **MIDI and Control Surfaces**



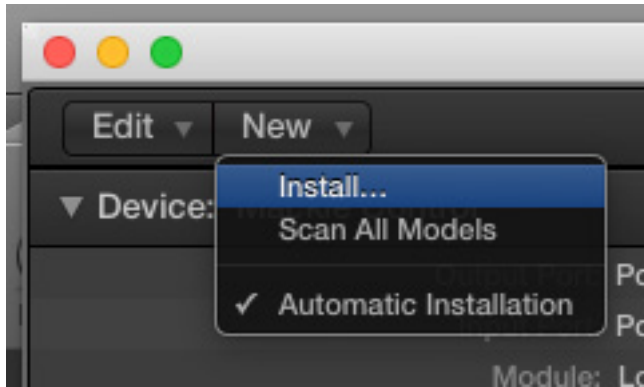
Step 4:

- Select tab **Control Surfaces**
- Click on **Setup...**

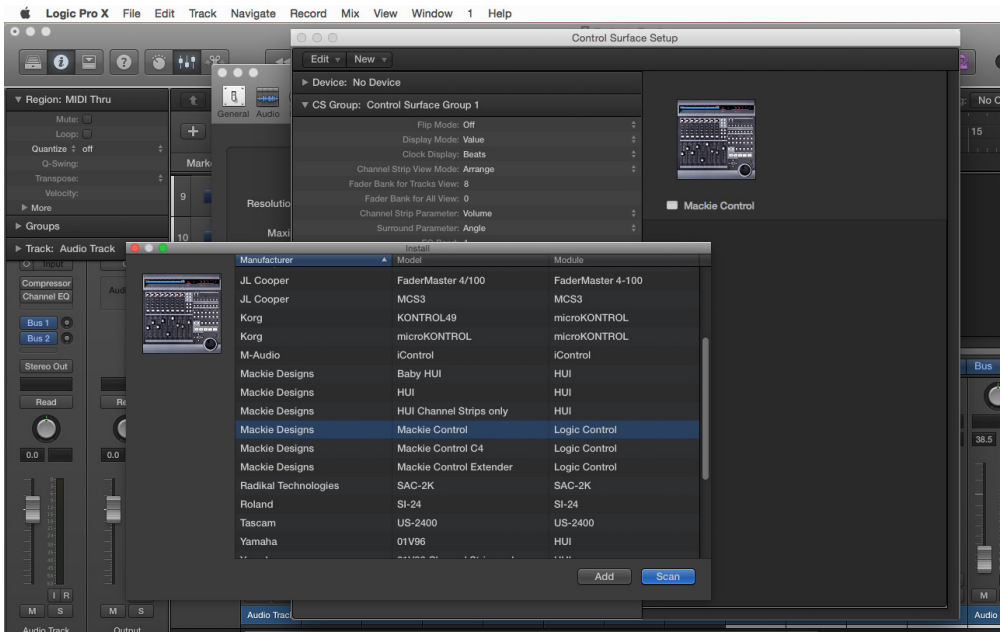


Step 5:

- Press **New->Install...**

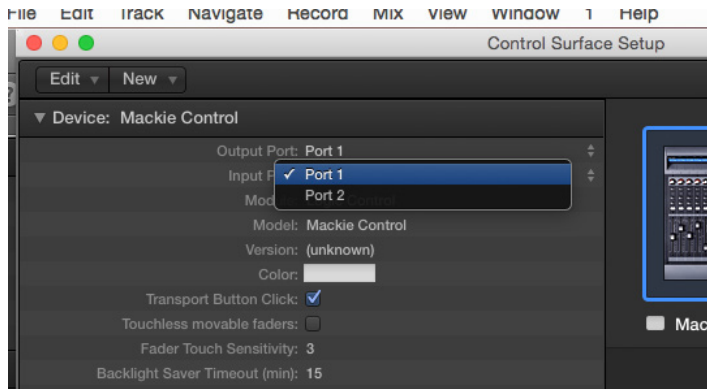


- Select **Mackie** as shown below and click **Add**



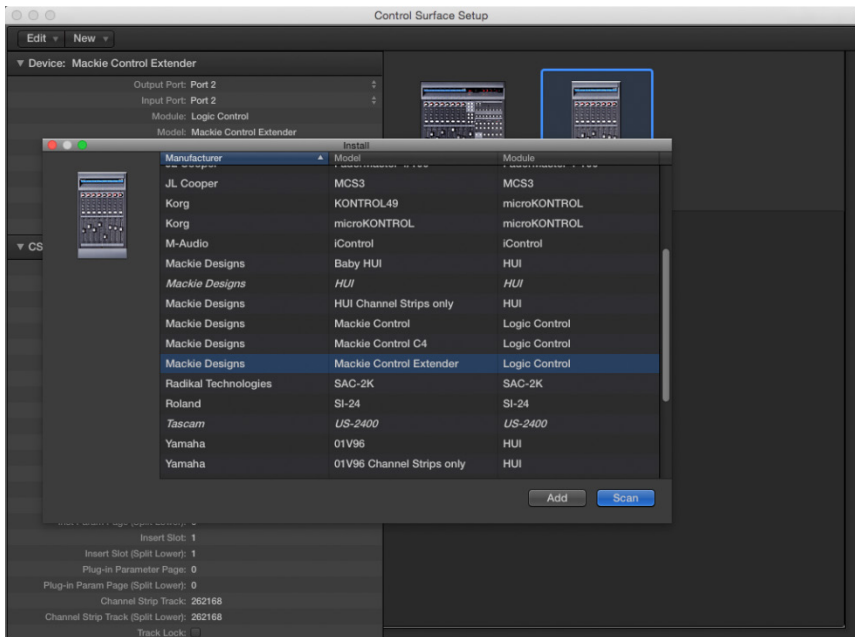
Step 6:

- Choose **Port 1** as **Input** and **Output**



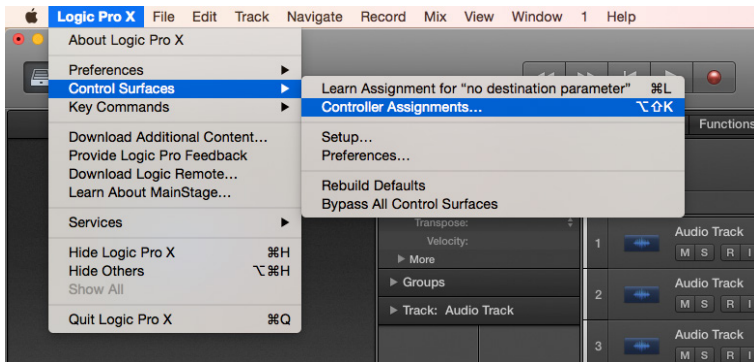
Step 7: (optional)

- If you want to connect more than one extension, you should redo step 5 and 6 but select **Port 2** and **Mackie Control Extender**
If there is only one D400 showing up, you need to enable the extensions first. How you can do that is described in the main manual.

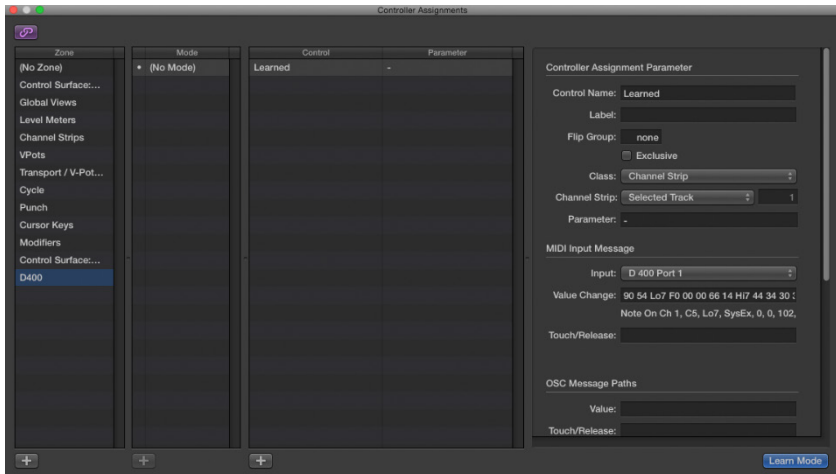


Step 8: (optional)

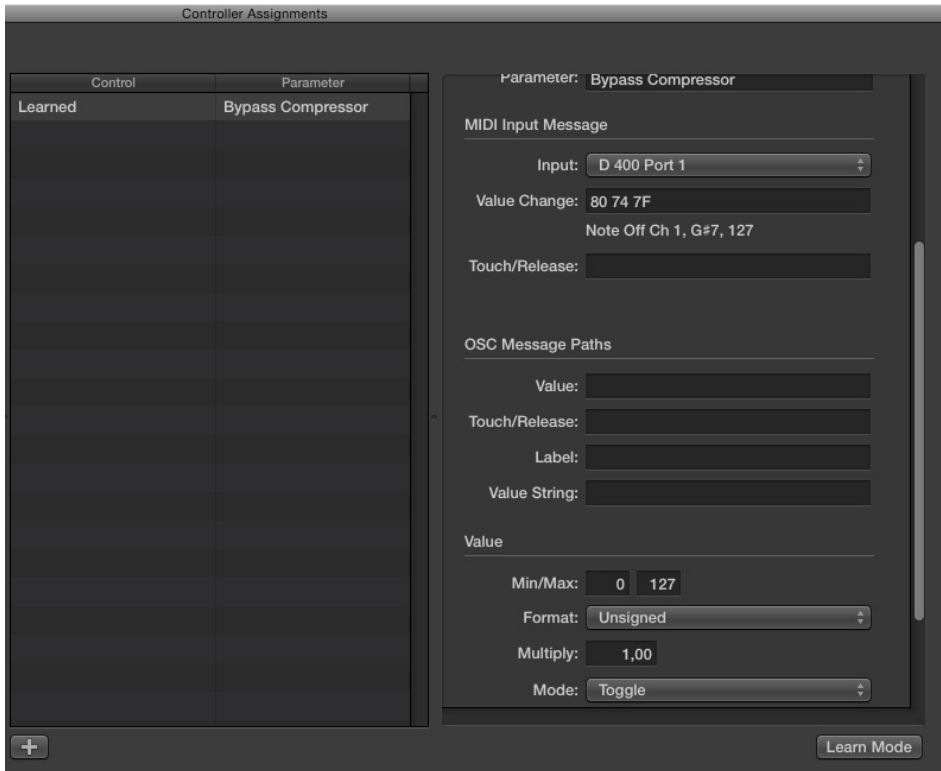
- If you want to use all keys, you need to assign them first. To do that go to **Logic->Control Surfaces->Controller Assignments...**



- In the new window you can assign all other buttons



*Attention! Make sure to select the mode **Toggle** for buttons and that the field **Value Change** ends with **7F** (not **Lo7**).*

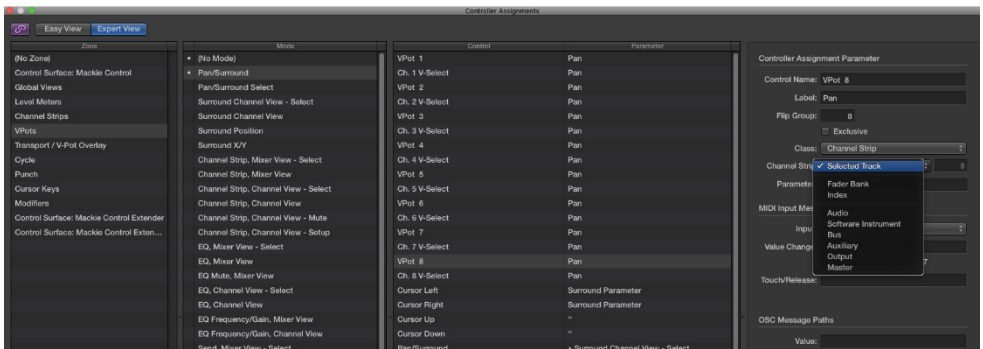


If you are having trouble with this, you should have a look at the manual of your DAW.

Step 9: (optional)

- To use the pan encoder for the selected track, go to **Logic->Control Surfaces->Controller Assignments... ->VPot 8** and change the selection to **Selected Track**

Given that the Mackie protocol has no dedicated pan control the control VPot 8 is used for that. This also means that the LED Ring 8 will not show any feedback.



Attention! *Given that the resolution of a LED ring in the Mackie/HUI protocol is only 11 it might seem like the LED ring jumps.*



For more information
visit www.asparion.de