



Digital Performer

D400

D400^T

D400^F

Digital Performer

This guide shows you how to set up the D400 in Digital Performer. All pictures provided were taken with Digital Performer 8.0 but it is also applicable to most other Digital Performer versions.

All files mentioned in this guide can be found on the USB drive, in the Asparion Configurator installation folder or on our website.

If you are having trouble with anything in this guide, please contact us via our website www.asparion.de/contact and we'll immediately help you.

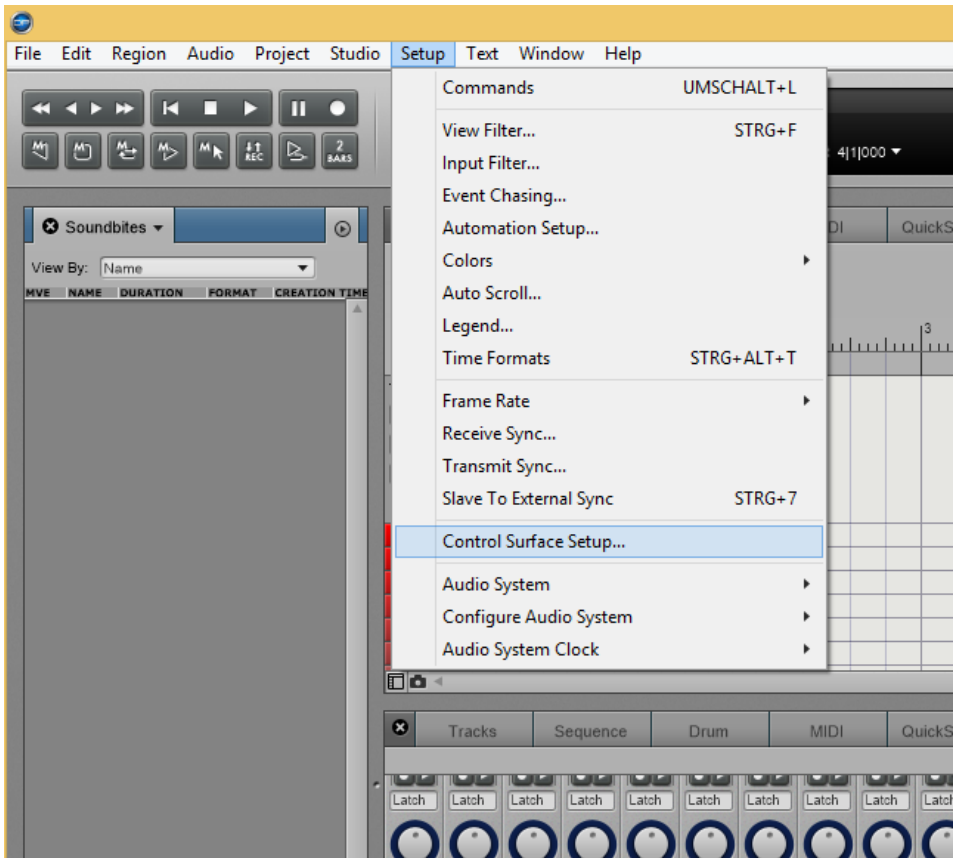
Step 1:

- Select the Digital Performer preset

How to select a preset is described in the main manual.

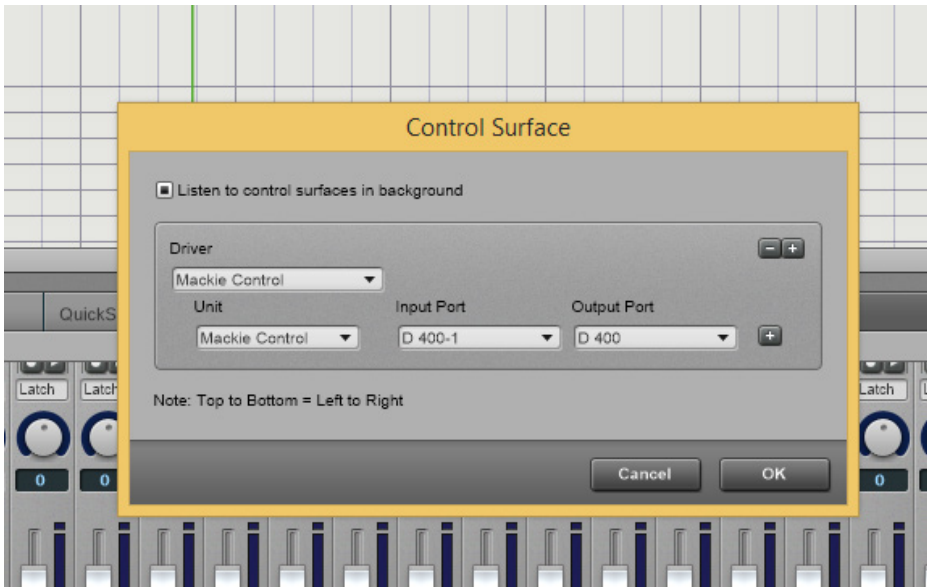
Step 2:

- Open Digital Performer
- Click on **Setup->Control Surface Setup...**



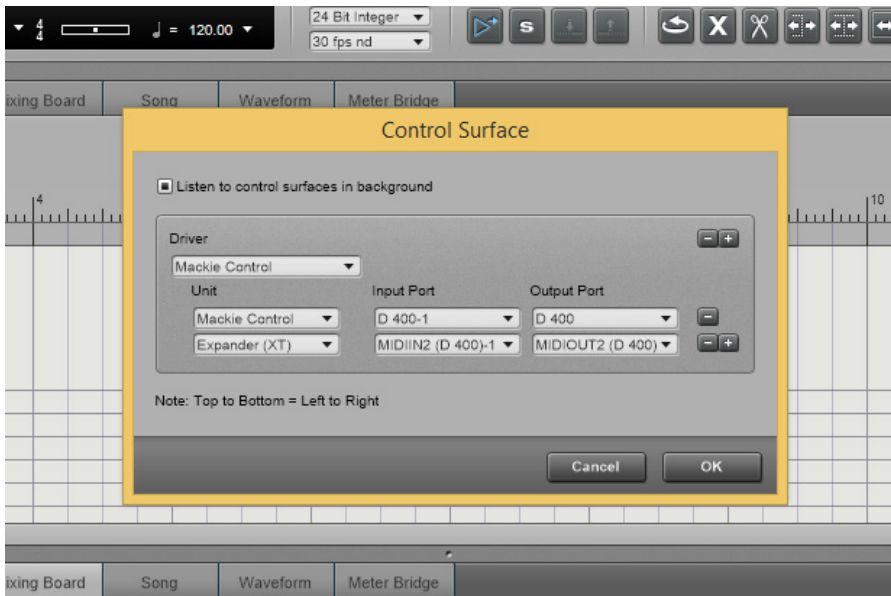
Step 3:

- Press the **+** sign and add **Mackie Control**
- Select everything as shown here:



Step 4: (optional)

- If you want to connect more than one extension, you should redo step 3 but select **D400 (2)** and **Expander (XT)**
If there is only one D400 showing up, you need to enable the extensions first. How you can do that is described in the main manual.





For more information
visit www.asparion.de