



**ACID Pro**

**D400**

D400<sup>T</sup>

D400<sup>F</sup>

# ACID Pro

This guide shows you how to set up the D400 in ACID Pro. All pictures provided were taken with ACID Pro 7.0 but it is also applicable to most other ACID Pro versions.

All files mentioned in this guide can be found on the USB drive, in the Asparion Configurator installation folder or on our website.

If you are having trouble with anything in this guide, please contact us via our website [www.asparion.de/contact](http://www.asparion.de/contact) and we'll immediately help you.

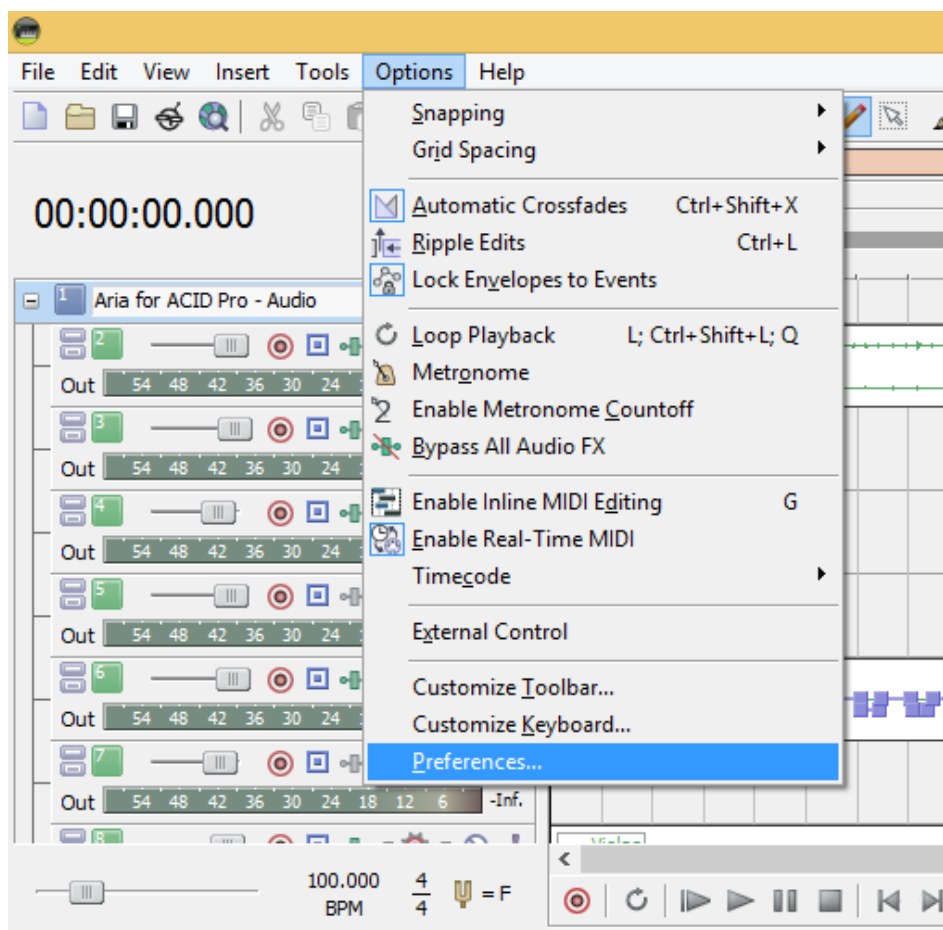
## Step 1:

- Select the ACID Pro preset

*How to select a preset is described in the main manual.*

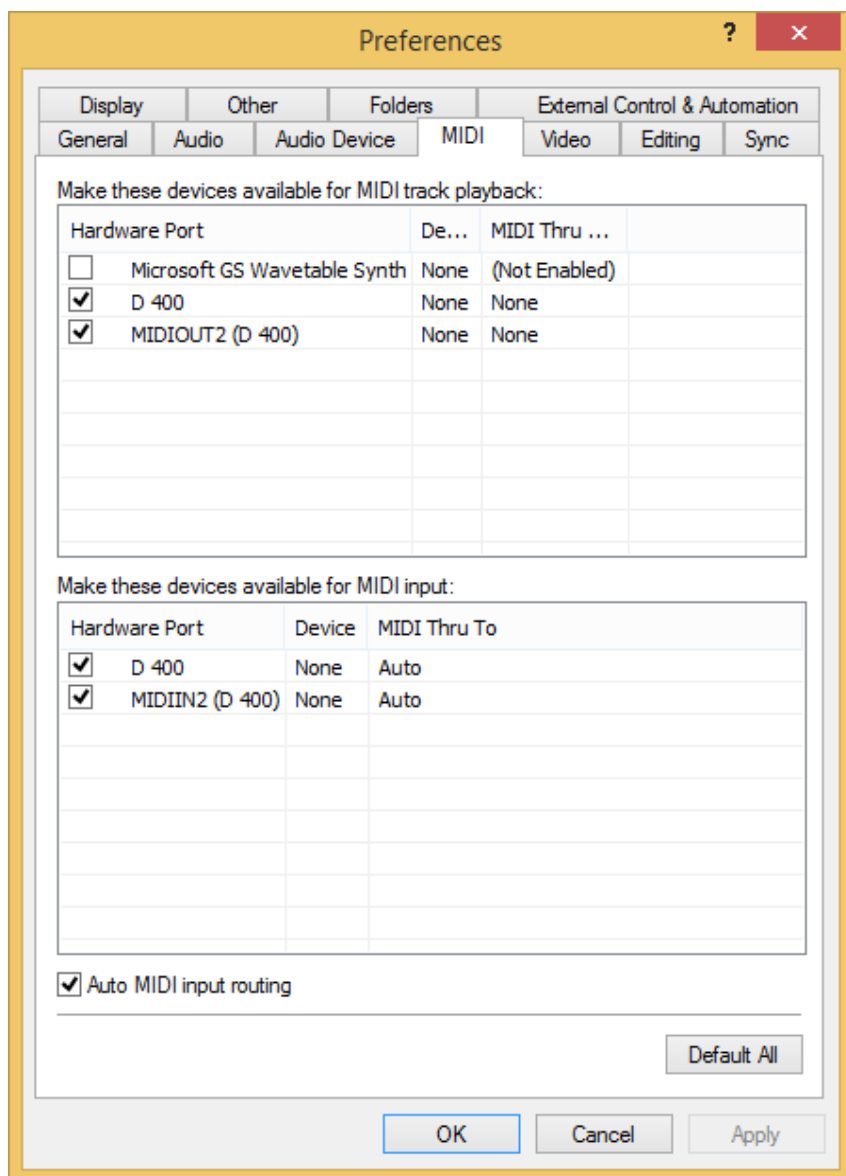
## Step 2:

- Open ACID Pro
- Click on **Options->Preferences...**



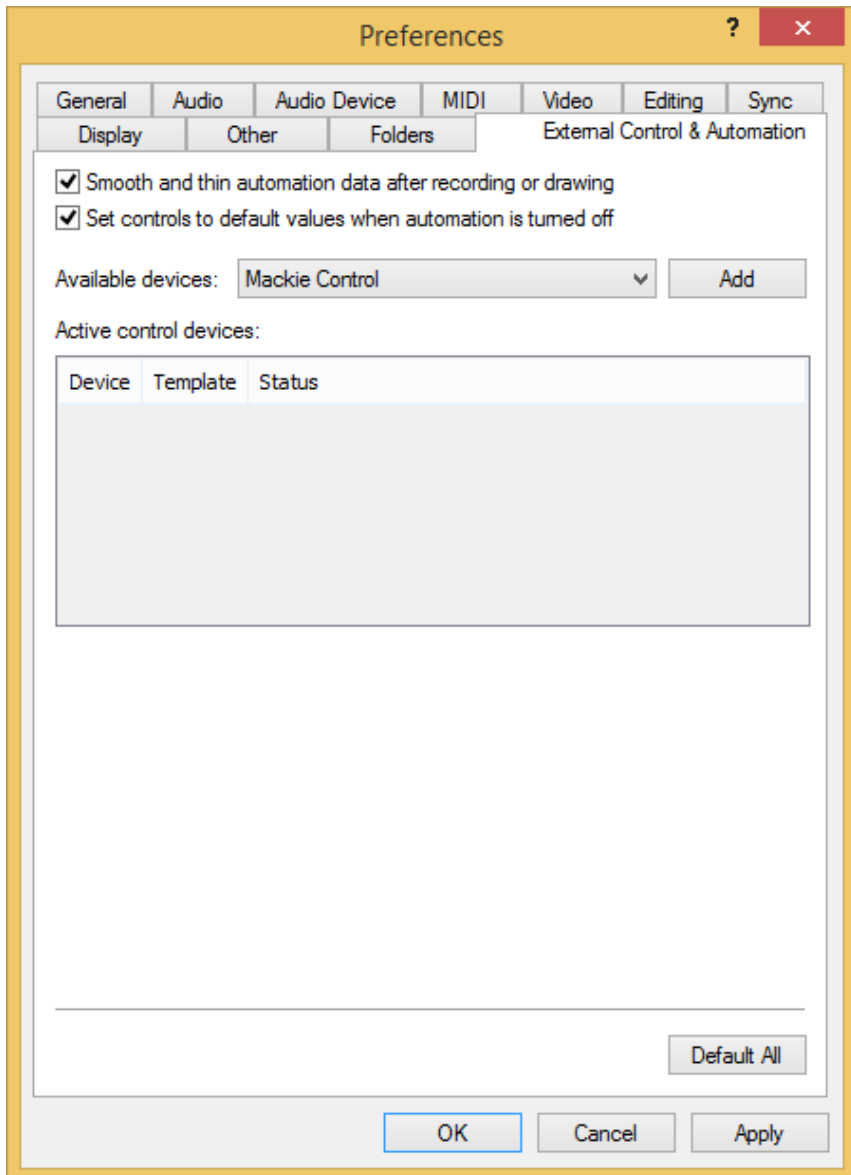
## Step 3:

- Go to **MIDI**
- Check all devices containing **D400**



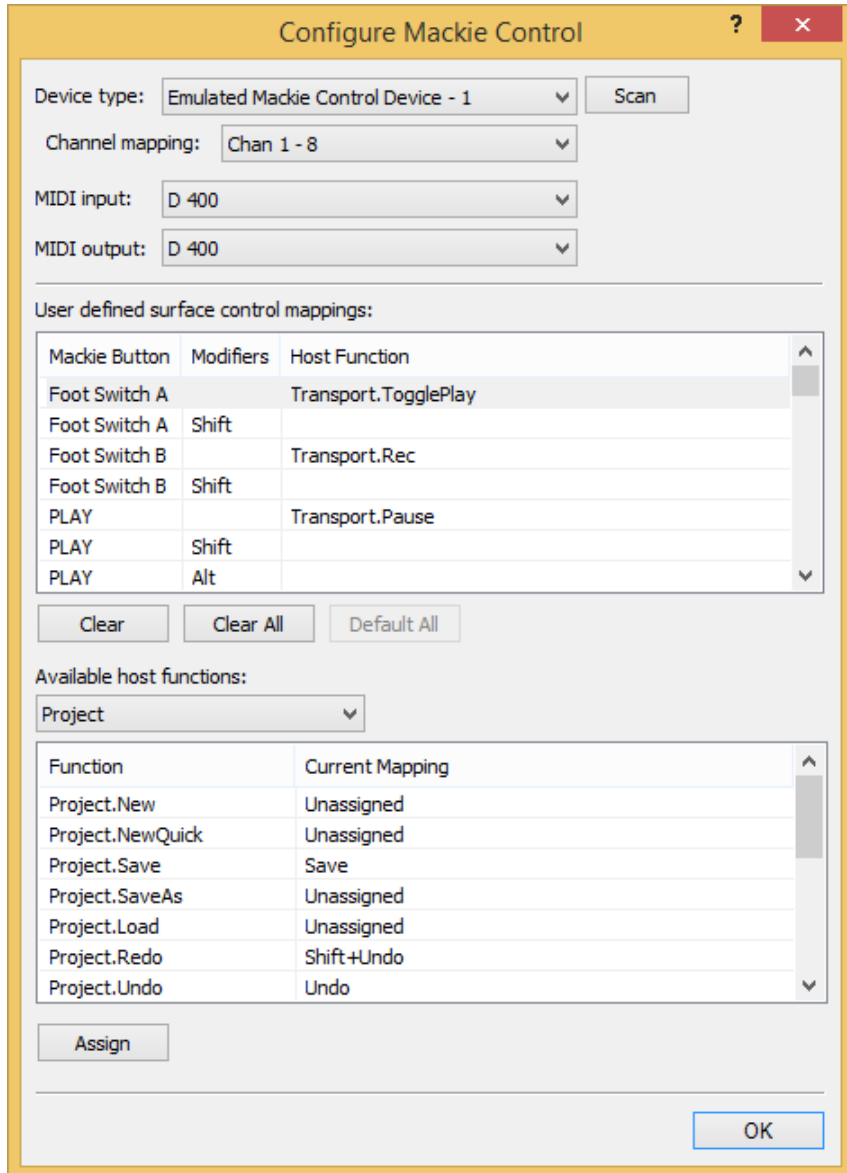
## Step 4:

- Go to **External Control & Automation**
- Press **Add**



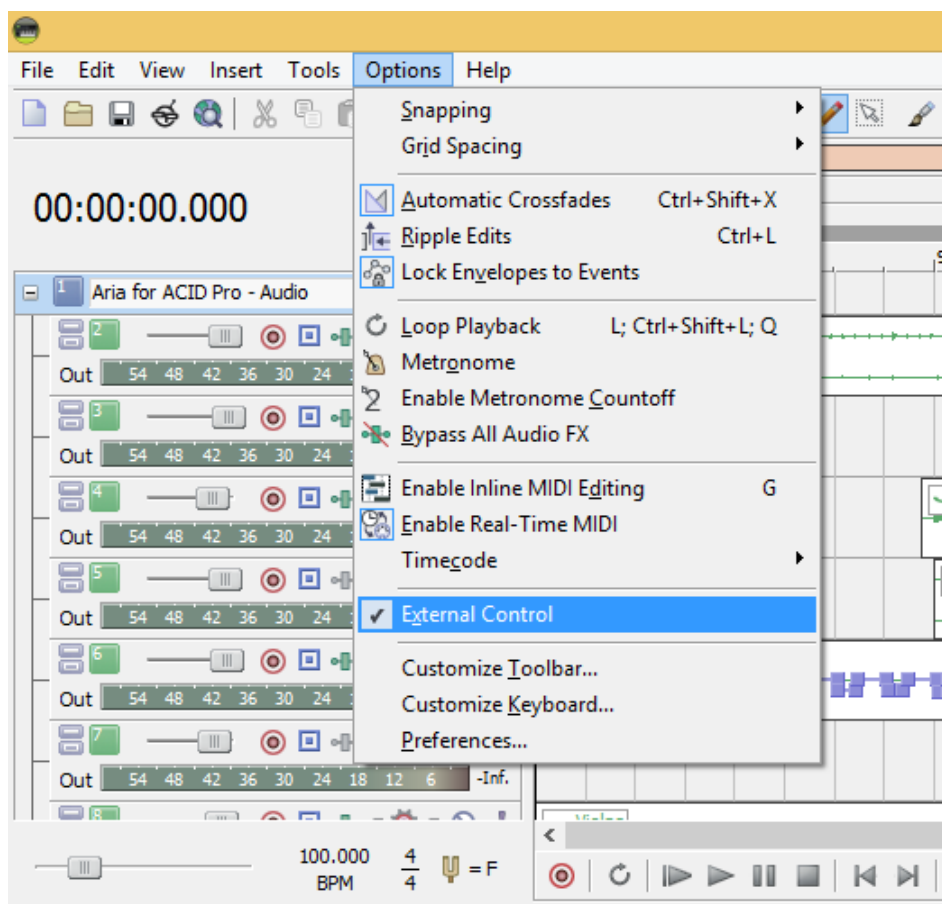
## Step 5:

- Click **Add Emulated Mackie Control Device** in the list
- Select **Emulated Mackie Control Device**
- Select **D400** as input and output



## Step 6:

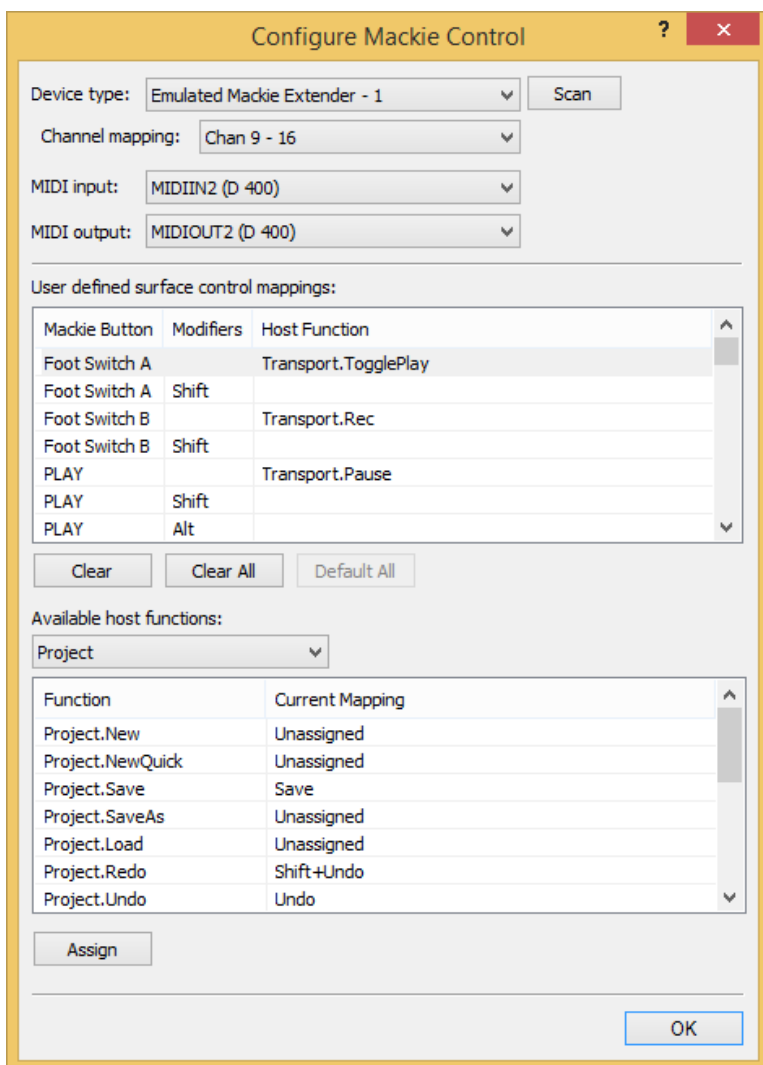
- Check **External Control** as shown below



## Step 7: (optional)

- If you want to connect more than one extension, you should redo step 3 and 5 but select **D400 (2)** and **Emulated Mackie Extender**

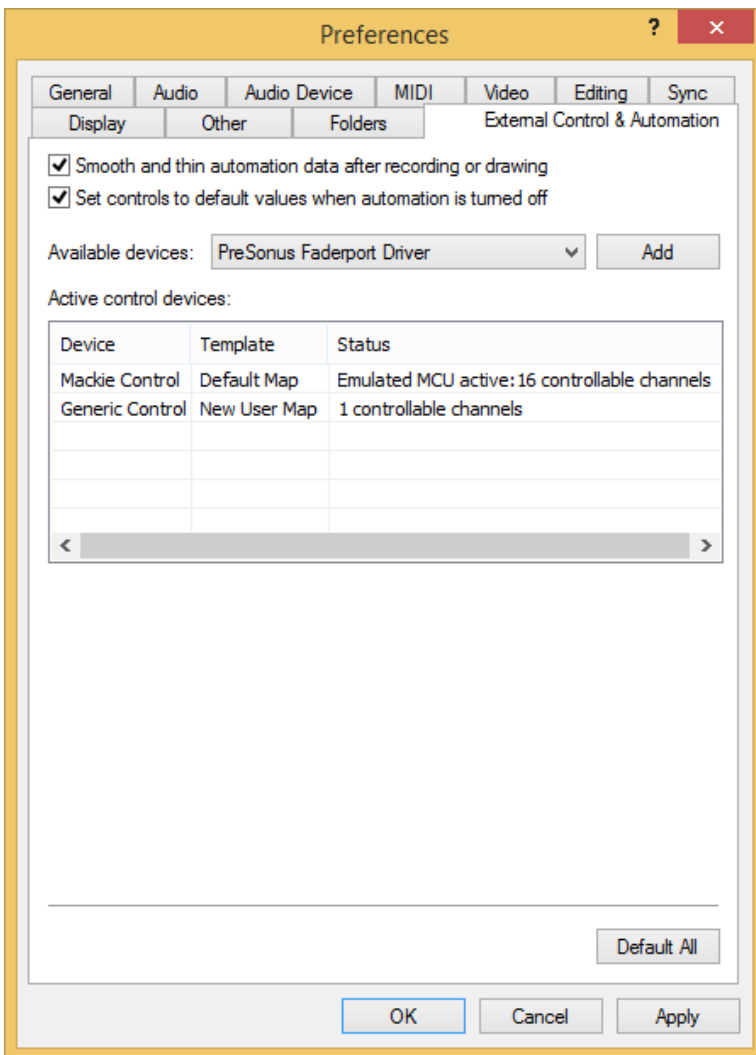
*If there is only one D400 showing up, you need to enable the extensions first. How you can do that is described in the main manual.*





## Step 8: (optional)

- If you want to use all keys, you also need to add a **Generic Control**
- Click on an action you want to assign, press **Edit...**, check **Learn**, press a button





For more information  
visit [www.asparion.de](http://www.asparion.de)