



Reaper OSC

**D700**

# Reaper OSC

This guide shows you how to set up the D700 in Reaper. All pictures provided were taken with Reaper 6.73 but it is also applicable to most other Reaper versions.

All files mentioned in this guide can be found on the USB drive, in the Asparion Configurator installation folder or on our website.

If you are having trouble with anything in this guide, please contact us via our website [www.asparion.de/contact](http://www.asparion.de/contact) and we'll immediately help you.

## Step 1:

- Instead of connecting the D700 via Midi you can also connect it via OSC. This requires the use of the separate app Asparion Connector

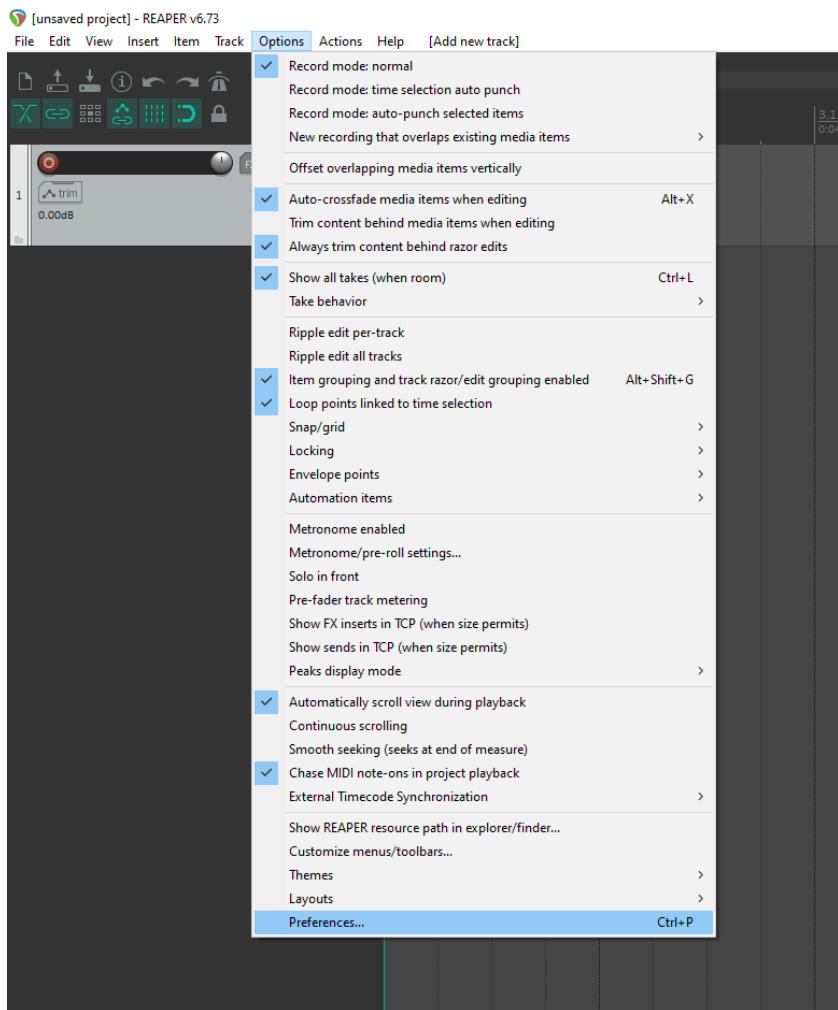
*How to set up the Asparion Connector is described in the main manual.*

- Make sure the Asparion Connector is running
- Select the Reaper OSC preset

*How to select a preset is described in the main manual.*

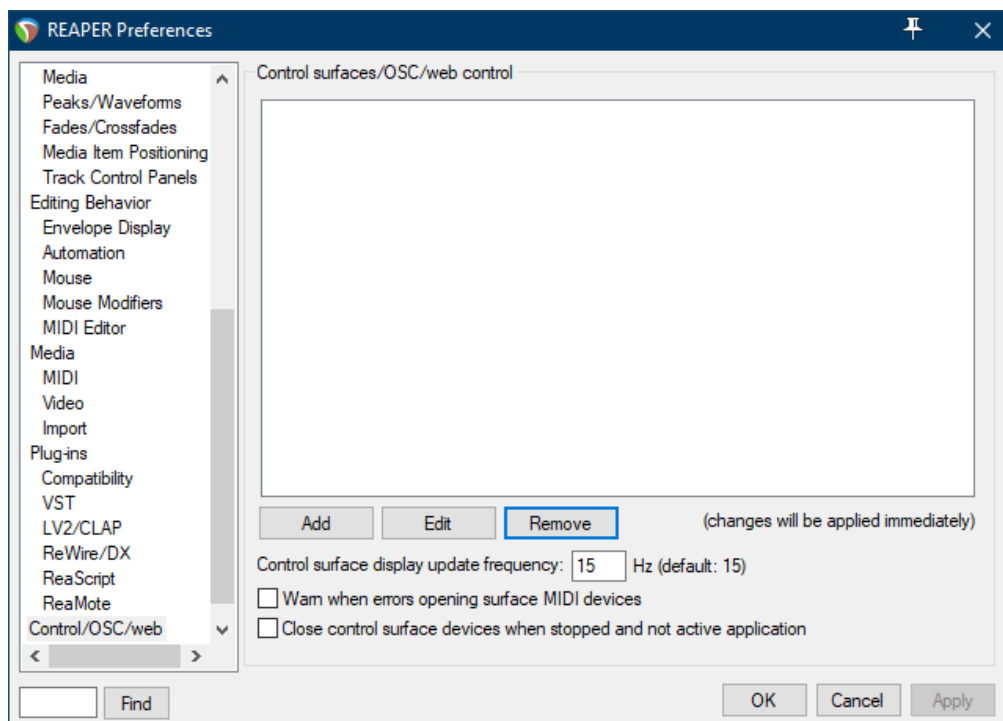
## Step 2:

- Open Reaper
- Click on **Options->Preferences...**



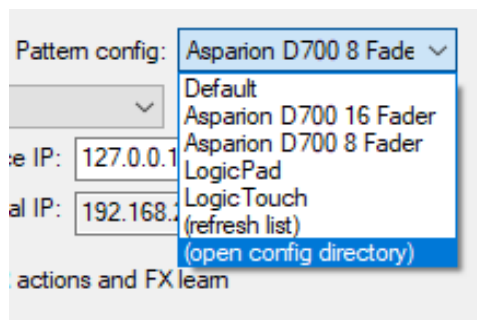
## Step 3:

- Go to **OSC**
- Click **Add**



## Step 4:

- Select **OSC** from the list
- Click on **(open config directory)** from the list
- Copy all the Reaper files (e.g. **Asparion D700 8 Fader.ReaperOSC**) in that directory
- Select **(refresh list)**



## Step 5:

- Configure as shown below

*Make sure the ports match the ports selected in the Asparion Connector.*

Control Surface Settings

Control surface mode: OSC (Open Sound Control) ▾

Device name: D700 OSC Pattern config: Asparion D700 8 Fade ▾

Mode: Configure device IP+local port ▾

Device port: 7000 Device IP: 127.0.0.1

Local listen port: 8000 Local IP: 192.168.2.49 Listen...

☒ Allow binding messages to REAPER actions and FX learn

If outgoing packets are dropped by the network, try increasing these values:

Outgoing max packet size: 1024 Wait between packets: 10 ms

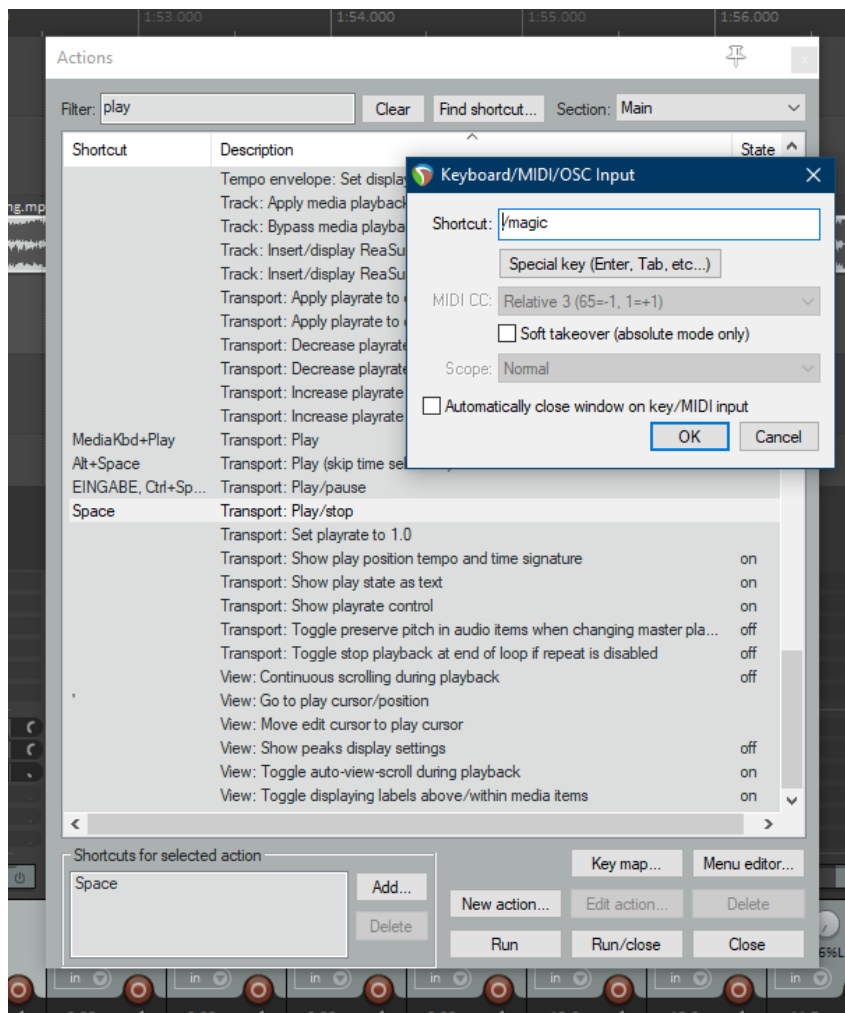
OK Cancel

- If you want to connect more than one extension, select **Asparion D700 16 Fader** (resp. 24, 32, ...) as **Pattern config**

## Step 6: (optional)

To manually assign keys (e.g. the **Magic \*** button), do the following:

- Go to **Actions->Show action list...**
- Choose an action and click **Add...** and then assign the button by clicking it



## Hints:

- With the knobs **Pan**, **EQ**, **Send** and **FX** you can assign a function to the encoders. With a click on the encoder, you can reset the parameter
- The **EQ** button will assign the **Receive** channels to the encoders. The actual EQ can be controlled via the **FX** button like all other plugins
- In **FX** mode you can control the currently selected plugin. Double click the arrow keys to change the parameter bank





For more information  
visit [www.asparion.de](http://www.asparion.de)