



FL Studio

D700

FL Studio

This guide shows you how to set up the D700 in FL Studio. All pictures provided were taken with FL Studio 20 but it is also applicable to most other FL Studio versions.

All files mentioned in this guide can be found on the USB drive, in the Asparion Configurator installation folder or on our website.

If you are having trouble with anything in this guide, please contact us via our website www.asparion.de/contact and we'll immediately help you.

Step 1:

- Select the FL Studio preset

How to select a preset is described in the main manual.

Step 2:

- Extract and copy the folder "Asparion D700" to FL Studio

Windows:

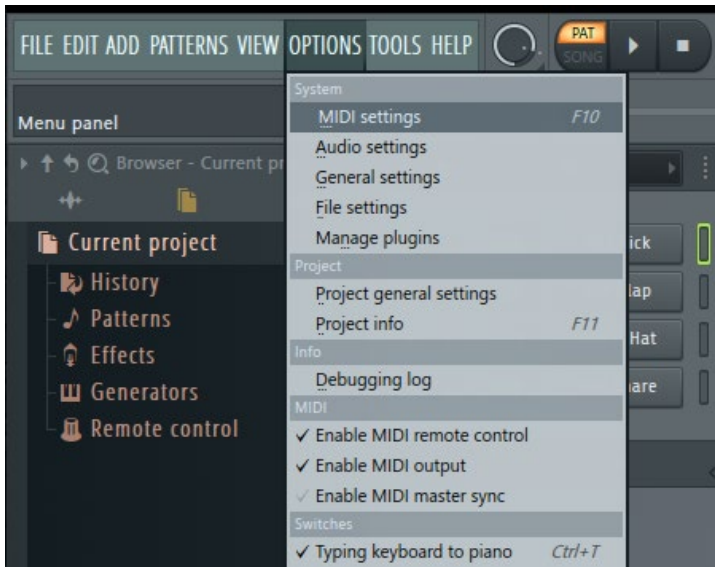
Documents\Image-Line\Data\FL Studio\Settings\Hardware\

Mac:

Documents/Image-Line/Data/FL Studio/Settings/Hardware/

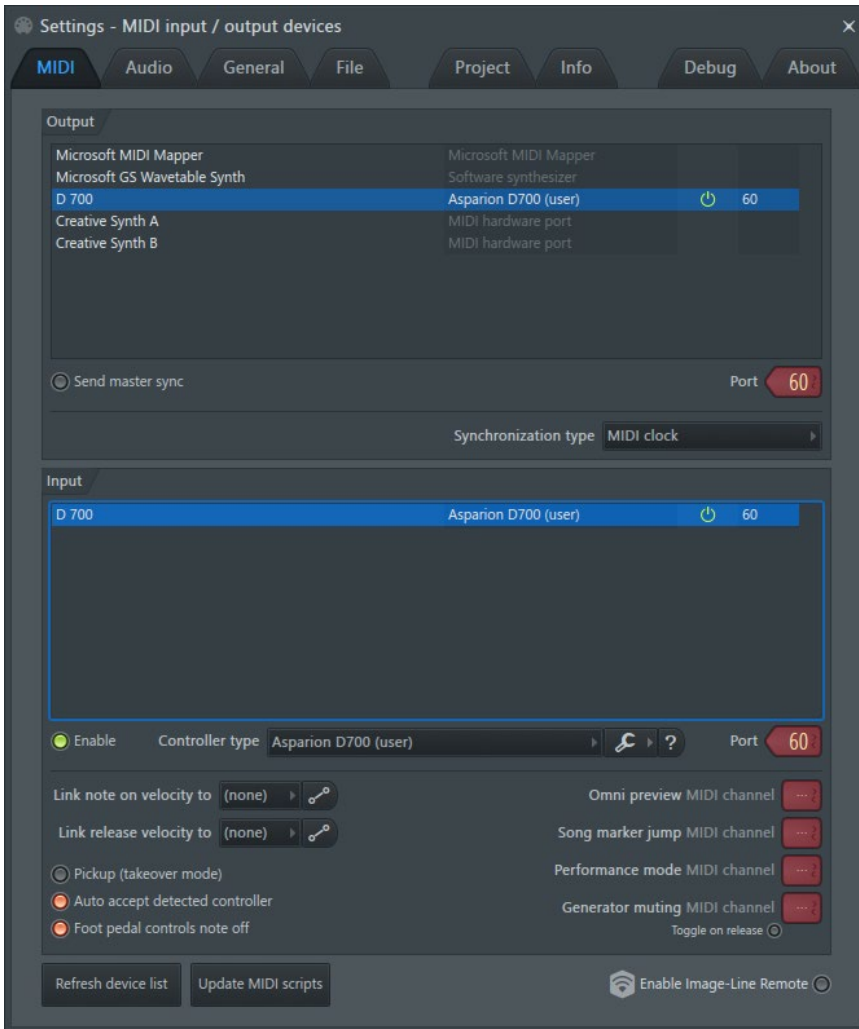
Step 3:

- Open FL Studio
- Click on **OPTIONS->MIDI settings**



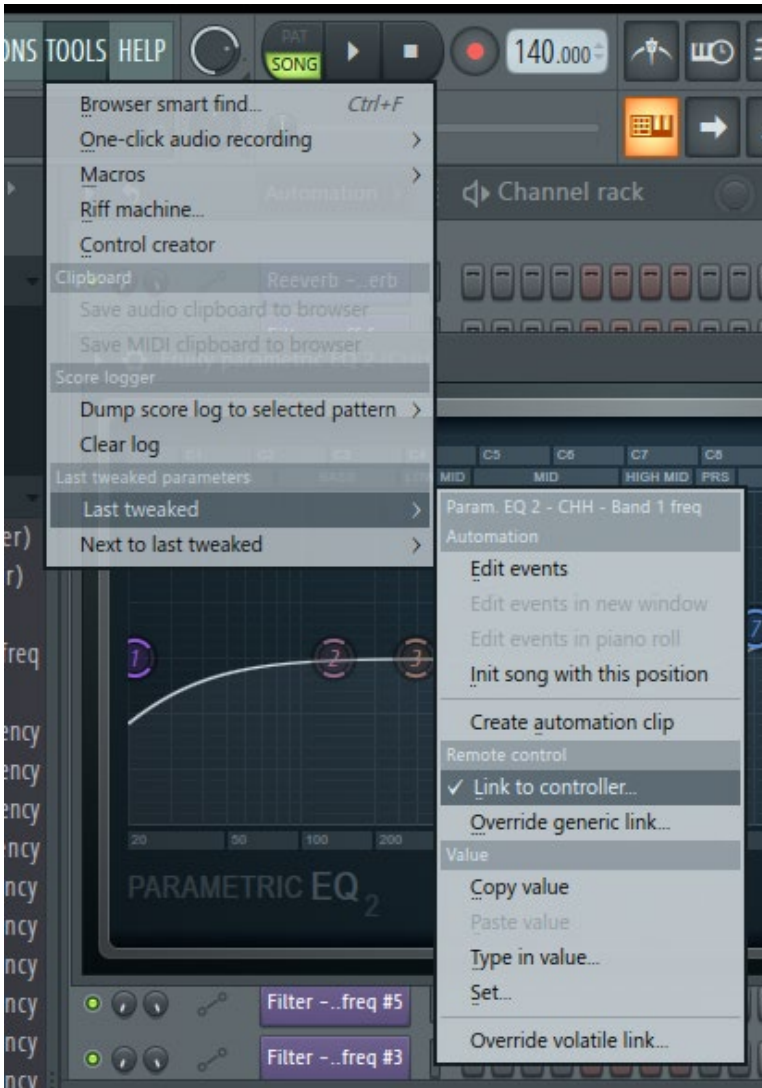
Step 4:

- Go to **D700**
- Select **Asparion D700** as **Controller type**
- Restart FL Studio

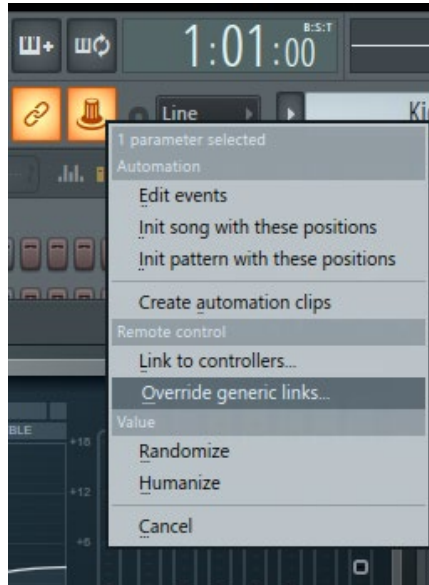


Step 5: (optional)

- You can freely assign controllers by adjusting the element in FL Studio and then click **Link to controller...** This can be found in the main menu or by right clicking the element. These settings are linked to the project

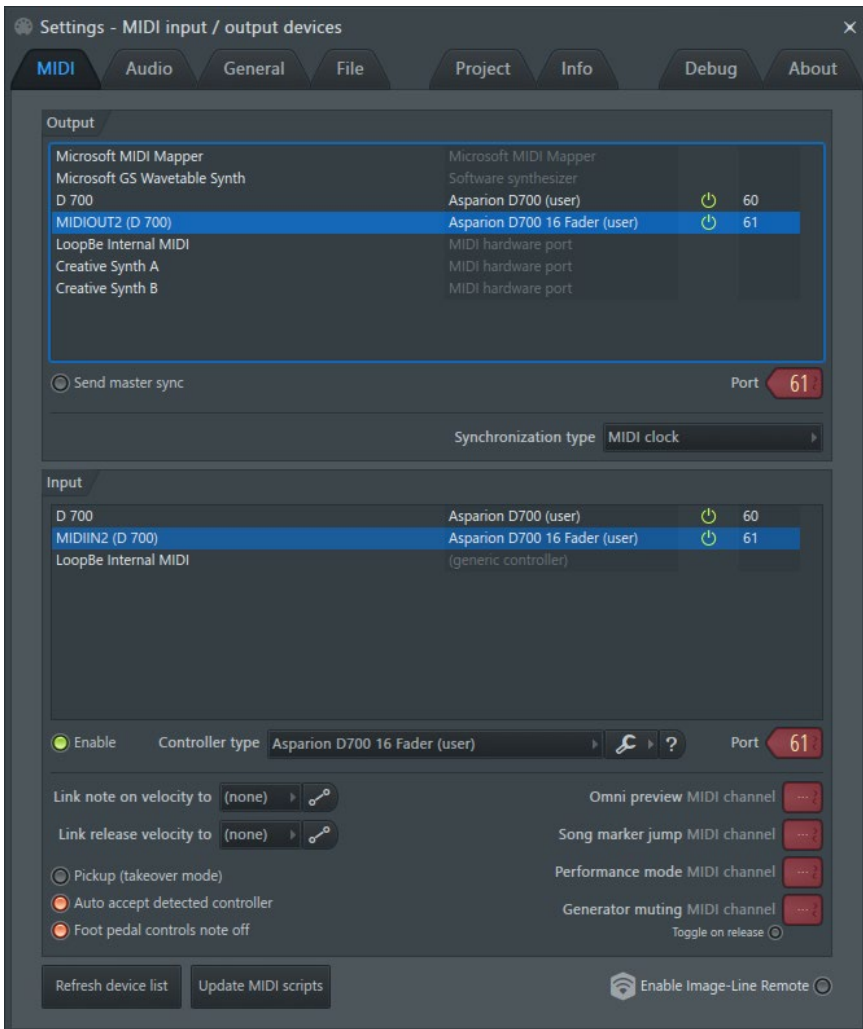


- To create project independent links choose **Override generic links...**



Step 6: (optional)

- If you want to connect more than one extension, you should redo step 4 but select **Controller type Asparion D700F 16 Fader** etc. for the other D700 devices
If there is only one D700 showing up, you need to enable the extensions first. How you can do that is described in the main manual.



Hints:

- With the knob **EQ**, you can assign the EQ of the currently selected track to the encoders. Press **EQ** again to switch pages or use 16 faders to see all EQ parameters at the same time. To reset a parameter, click the encoder
- With the knob **FX**, you can assign the plugin volume levels of your currently selected track to the encoders. Press **FX** again to toggle through all parameters or use 16 faders. To reset a parameter, click the encoder
- With the knob **Send**, you can assign the send volume levels of your currently selected track to the encoders. Click encoder to enable. Press **Send** again to switch pages or use multiple Extensions
- Click the master volume encoder to mute the master track



For more information
visit www.asparion.de