



Digital Performer

D700

Digital Performer

This guide shows you how to set up the D700 in Digital Performer. All pictures provided were taken with Digital Performer 11 but it is also applicable to most other Digital Performer versions.

All files mentioned in this guide can be found on the USB drive, in the Asparion Configurator installation folder or on our website.

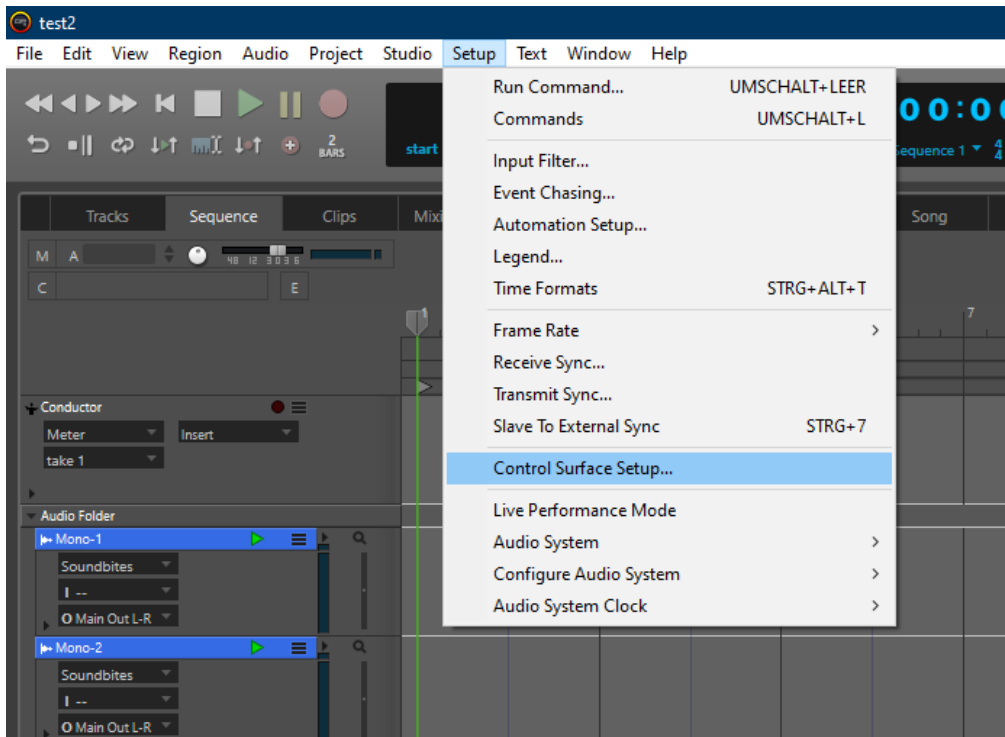
If you are having trouble with anything in this guide, please contact us via our website www.asparion.de/contact and we'll immediately help you.

Step 1:

- **Select the Digital Performer preset**
How to select a preset is described in the main manual.

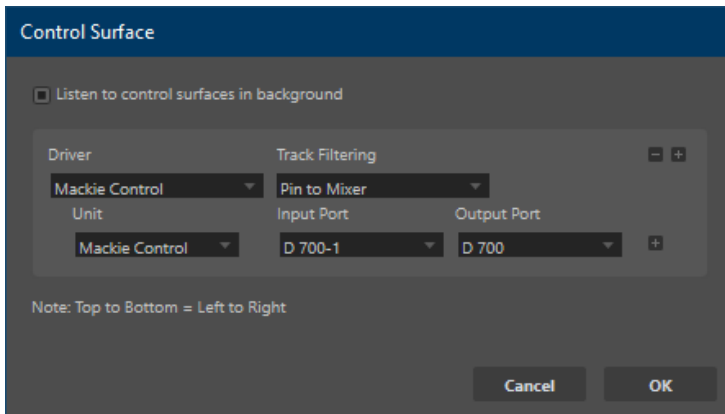
Step 2:

- Open Digital Performer
- Click on **Setup->Control Surface Setup...**



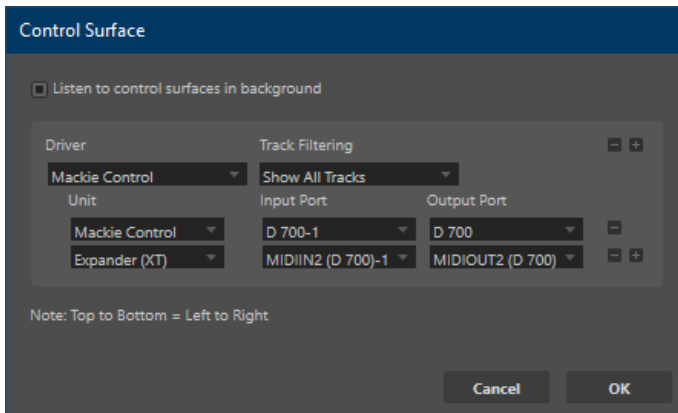
Step 3:

- Press the **+** sign and add **Mackie Control**
- Select everything as shown here:



Step 4: (optional)

- If you want to connect more than one extension, you should redo step 3 but select **D700 (2)** and **Expander (XT)**
If there is only one D700 showing up, you need to enable the extensions first. How you can do that is described in the main manual.



Hints:

- Double click an encoder to set pan to center
- You can use the Asparion Configurator to change the assignments of the buttons. E.g., of the Magic * button
- You can assign a function to the encoders with the keys **Pan**, **Send** and **FX**. Additionally, you can press the EQ key and then press one of the eight encoders to choose a function. The corresponding function is named on the display
- Additional hints can be found in the program under **Help->Control Surfaces**



For more information
visit www.asparion.de