



Cakewalk / Sonar

D700

Cakewalk / Sonar

This guide shows you how to set up the D700 in Cakewalk. All pictures provided were taken with Cakewalk 2022 but it is also applicable to most other Cakewalk and Sonar versions.

All files mentioned in this guide can be found on the USB drive, in the Asparion Configurator installation folder or on our website.

If you are having trouble with anything in this guide, please contact us via our website www.asparion.de/contact and we'll immediately help you.

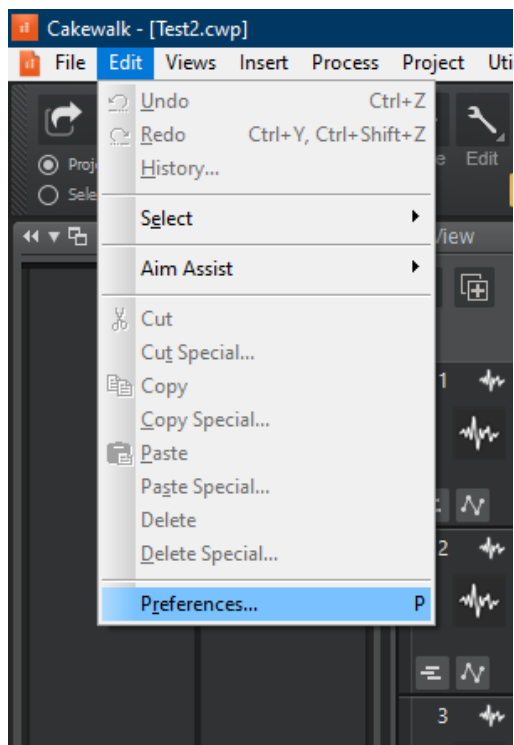
Step 1:

- Select the Cakewalk preset

How to select a preset is described in the main manual.

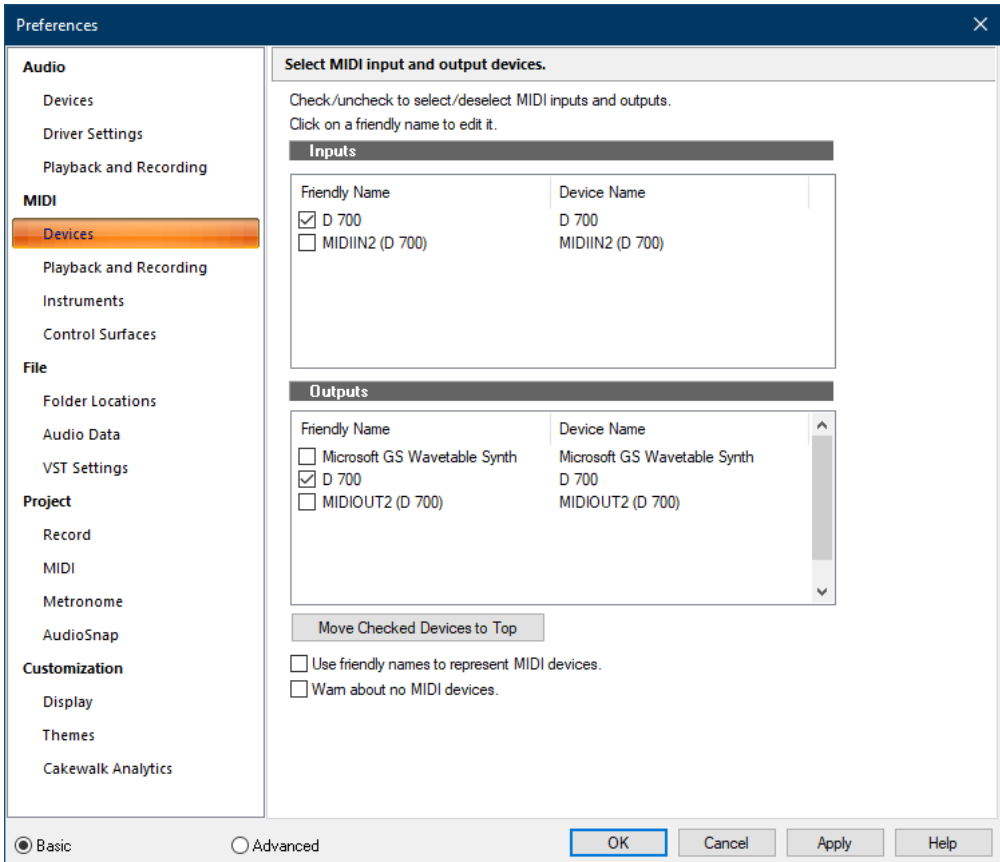
Step 2:

- Open Cakewalk
- Click on **Edit->Preferences...**



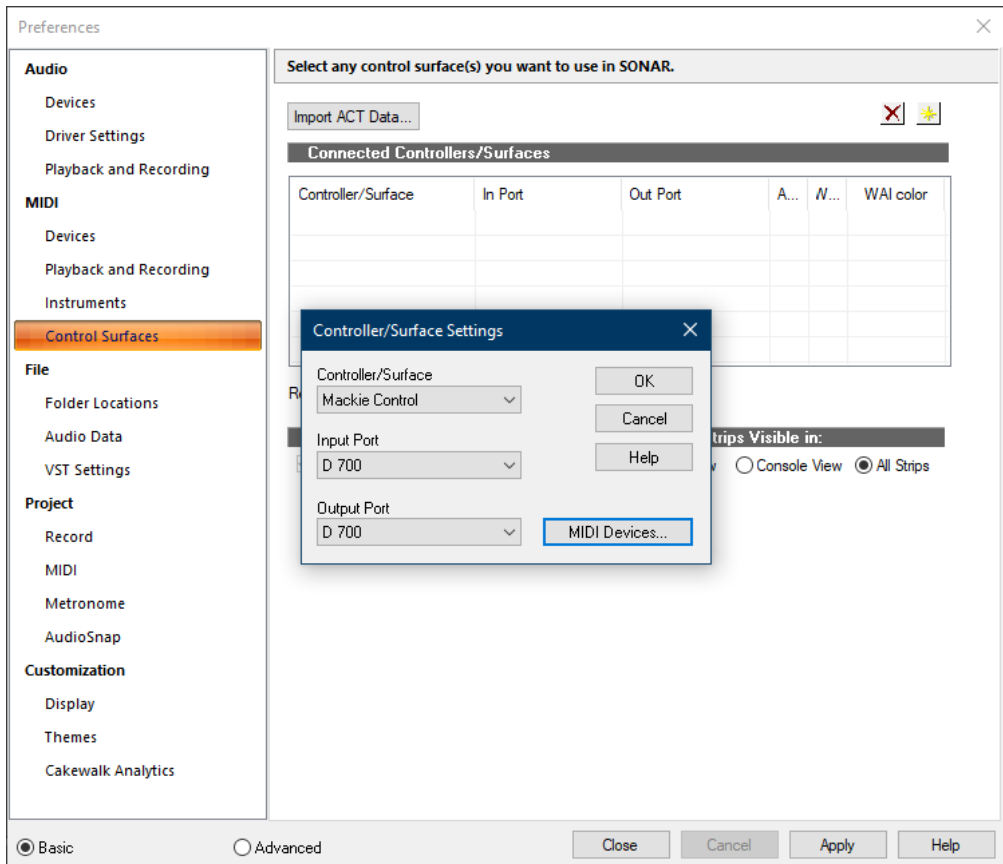
Step 3:

- Go to **MIDI->Devices**
- Check all devices containing **D700**
- Press **Apply**



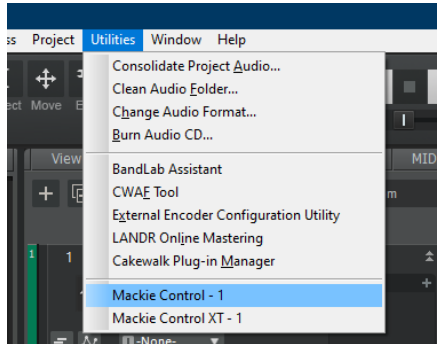
Step 4:

- Go to **Control Surfaces**
- Add **Mackie Control** as shown below
- Select **D700** as **Input and Output Port**

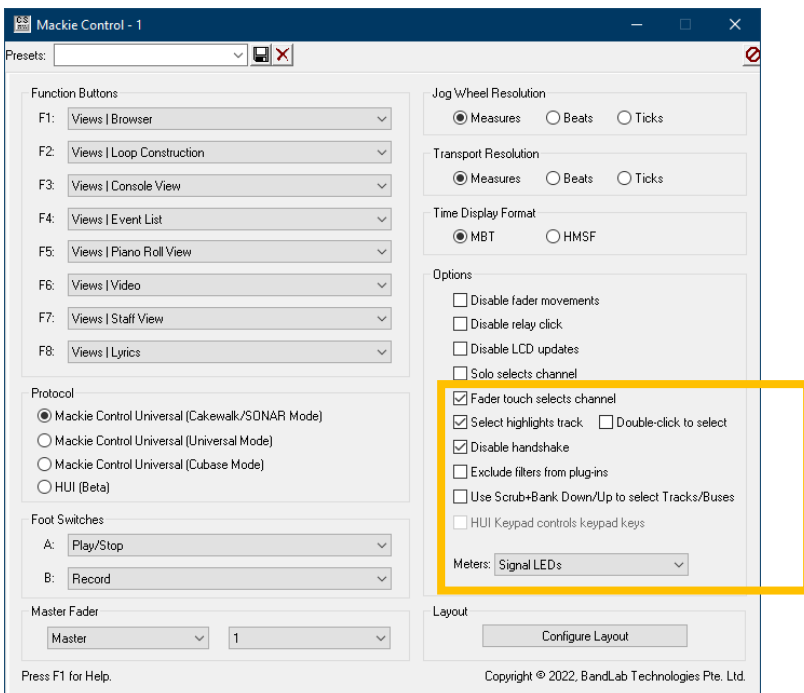


Step 5: (optional)

- Go to **Utilities->Mackie Control**

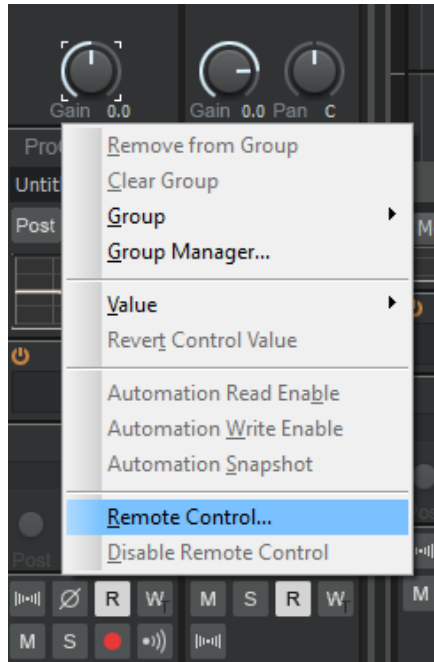


- We recommend the following settings:



Step 6: (optional)

- Cakewalk has a Midi learn function. To use that, right click on an element and choose **Remote Control...**



- Rotate an encoder on the device and press **Learn** and **OK**

The image shows a software dialog box titled "Remote Control" with a close button (X) in the top right corner. The dialog is divided into two main sections: "Channel Messages" and "SysX".

Channel Messages

- Note On: C 0
- Note On/Off: C 0
- Controller: 16
- Wheel
- RPN: 0
- NRPN: 0
- MIDI Channel: 1 (dropdown menu)

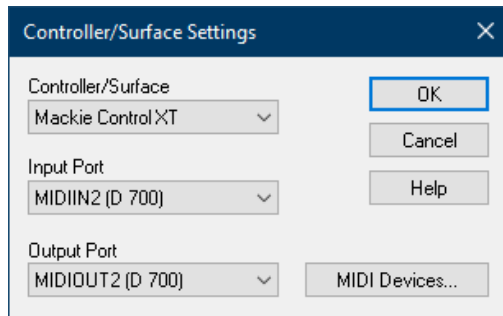
Buttons on the right side of the Channel Messages section: OK, Cancel, **Learn** (highlighted with a blue border), and Help.

SysX

- Single Byte
- High Byte First: Starts with: 00 00 00 00 00 00 ()
- Low Byte First: Ends with: 00 00 00 00 00 00 ()

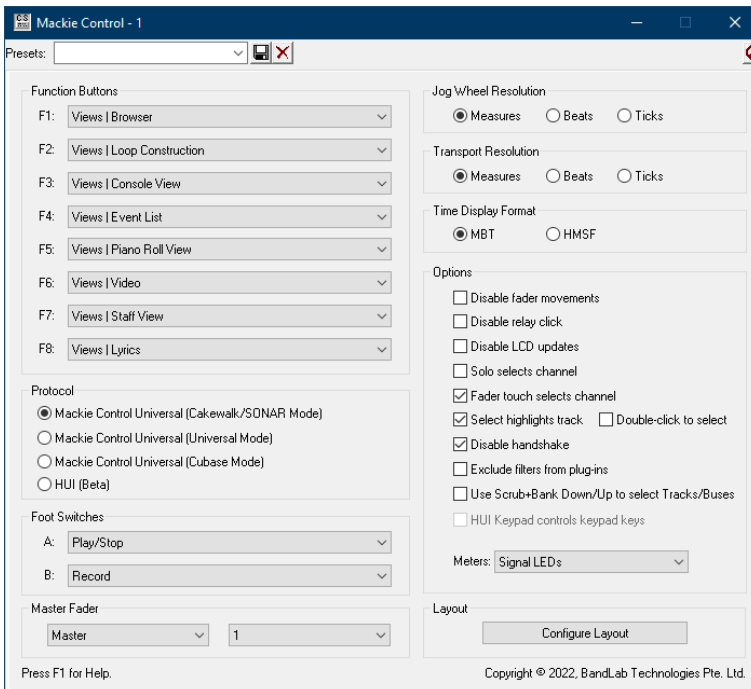
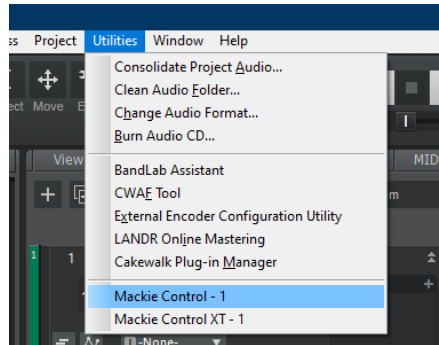
Step 7: (optional)

- If you want to connect more than one extension, you should redo step 3 and 4 but select **D700 (2)** as Input and as Output and **Mackie Control XT**
If there is only one D700 showing up, you need to enable the extensions first. How you can do that is described in the main manual.



Step 8: (optional)

- To arrange your devices, click **Utilities->Mackie Control->Configure Layout**



Step 9: (optional)

- Cakewalk now expects you to rotate an encoder on the respective extension to set the track number. Instructions are visible on the display. Set the track numbers according to your arrangement
- In case you have no display attached, rotate the first encoder of all extensions to the left for about 10 ticks. Then rotate the first encoder of the second extension to the right once. The first encoder of the third extension twice. And so on...
- Click **Press Again When Done**

Step 9: (optional)

- In the same window you can also assign buttons
- In the factory preset these are the corresponding keys:

D700	Cakewalk
Magic *	F1
Volume Click	F2



For more information
visit www.asparion.de