



Bitwig

D700

Bitwig

This guide shows you how to set up the D700 in Bitwig. All pictures provided were taken with Bitwig 4.4 but it is also applicable to most other Bitwig versions.

All files mentioned in this guide can be found on the USB drive, in the Asparion Configurator installation folder or on our website.

If you are having trouble with anything in this guide, please contact us via our website www.asparion.de/contact and we'll immediately help you.

Step 1:

- Select the Bitwig preset

How to select a preset is described in the main manual.

1

Step 2:

- Extract and copy the folder "Asparion" to Bitwig

Windows:

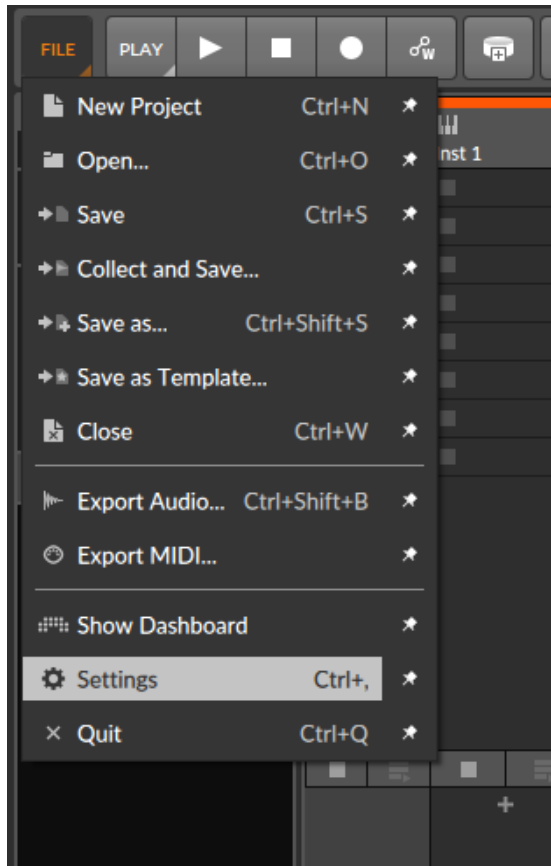
C:\Users\~yourName-\Documents\Bitwig Studio\Controller Scripts\

Mac:

/Users/~yourName~/Documents/Bitwig Studio/Controller Scripts

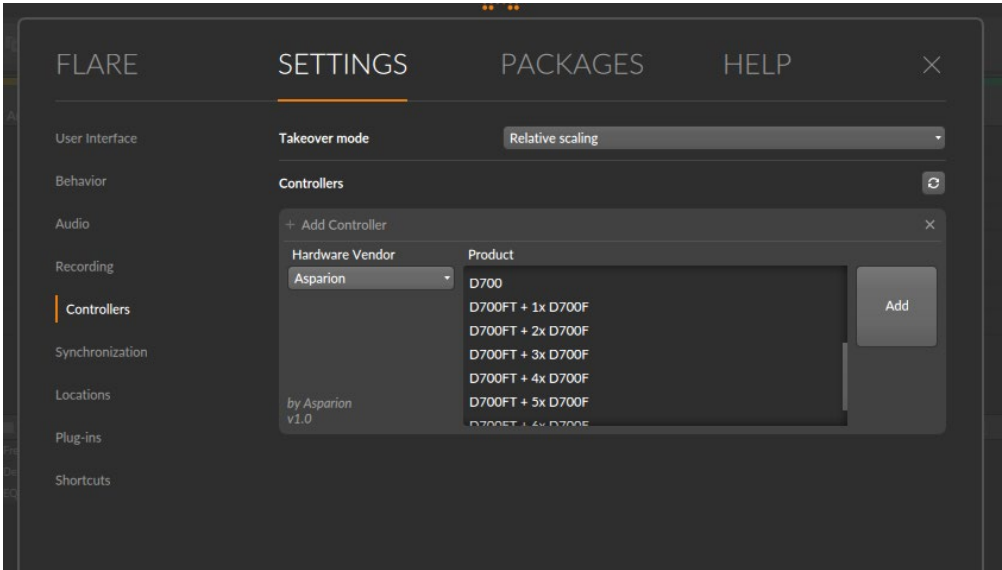
Step 3:

- Open Bitwig
- Click on **File->Settings**



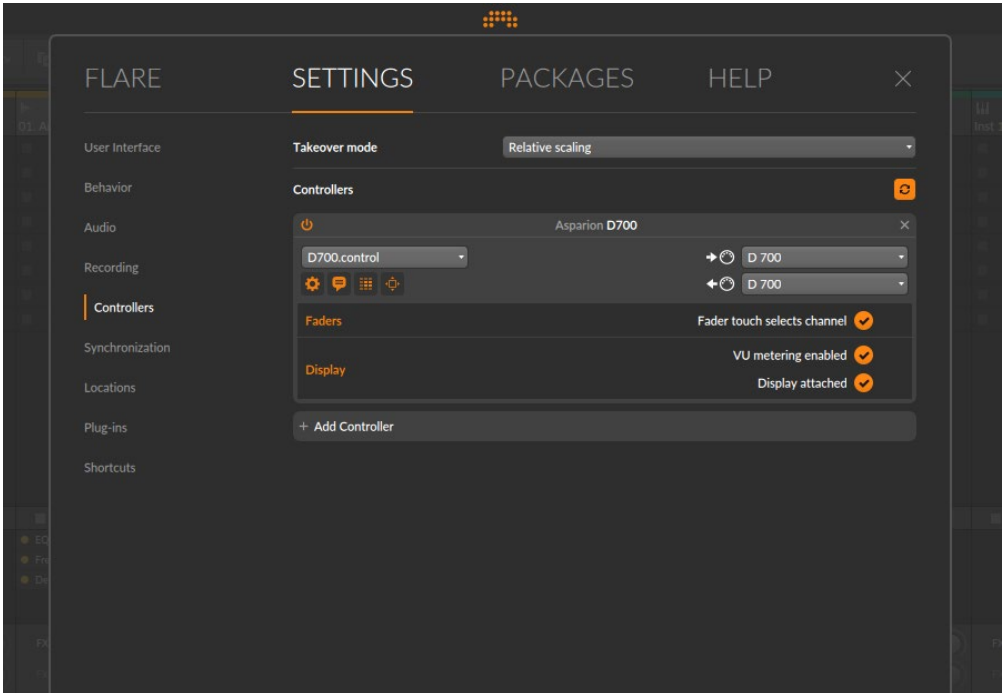
Step 4:

- Go to **Controllers**
- Click **Add Controller**
- Select **Asparion** from the list



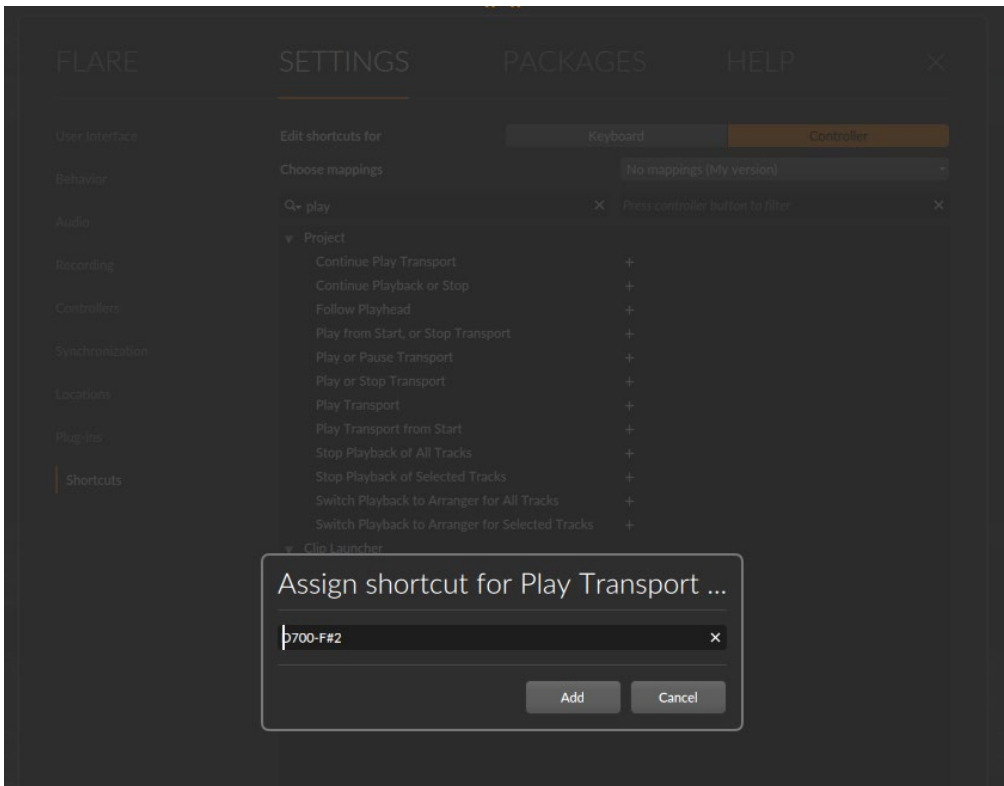
Step 5:

- Select **D700** as shown below



Step 6: (optional)

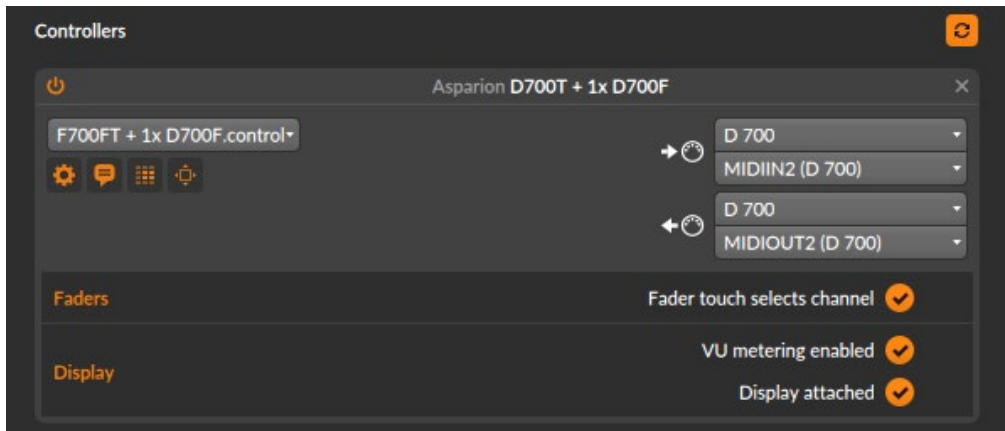
- To assign the button **Magic *** got to **File->Settings->Shortcuts**
- Click **Controller**, select the desired shortcut and click **+**
- Press the button to assign on the device



Step 7: (optional)

- If you want to connect more than one extension, you should redo step 4 and 5 but select the product with the correct number of extensions as shown below

If there is only one D700 showing up, you need to enable the extensions first. How you can do that is described in the main manual.



Hints:

- The small arrows on the top left show which parameters can currently be controlled by the D700
- With the knob **EQ**, you can assign the EQ of the currently selected track to the encoders. Make sure your track actually has an EQ. Press **EQ** again to switch pages
- With the knob **FX**, you can assign the devices of your currently selected track to the encoders. Press **FX** again to toggle through all parameters. This mode will skip the EQ
- To reset a parameter, click the encoder
- Click on the six dot symbol to view the functions that are mapped to the encoders as shown below. You can also change which parameters are controlled there





For more information
visit www.asparion.de