



Mixbus 32C

**D400**

D400<sup>T</sup>

D400<sup>F</sup>

# Mixbus 32C

This guide shows you how to set up the D400 in Mixbus 32C. All pictures provided were taken with Mixbus 32C v7 but it is also applicable to most other Mixbus 32C versions.

All files mentioned in this guide can be found on the USB drive, in the Asparion Configurator installation folder or on our website.

If you are having trouble with anything in this guide, please contact us via our website [www.asparion.de/contact](http://www.asparion.de/contact) and we'll immediately help you.

## Step 1:

- Select the Mixbus 32C preset

*How to select a preset is described in the main manual.*

1

## Step 2:

- Copy the file "Asparion Asparion\_D400.map" to Mixbus 32C

Windows:

C:\Users\~yourUsername\AppData\Local\Mixbus7\midi\_maps

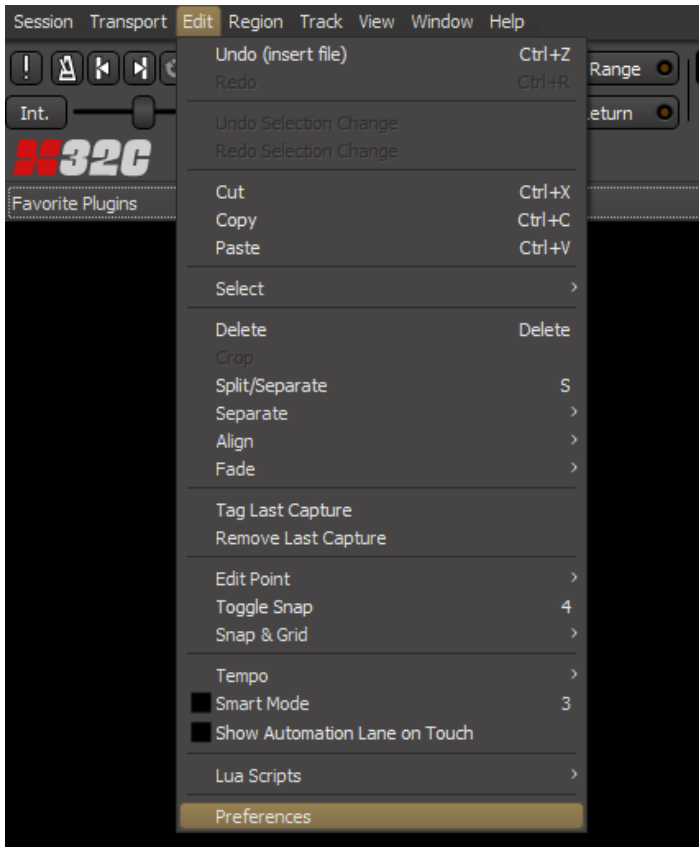
*If the directory "midi\_maps" doesn't exist, create it*

Mac:

/Applications/Mixbus32C.app/Contents/Resources/midi\_maps

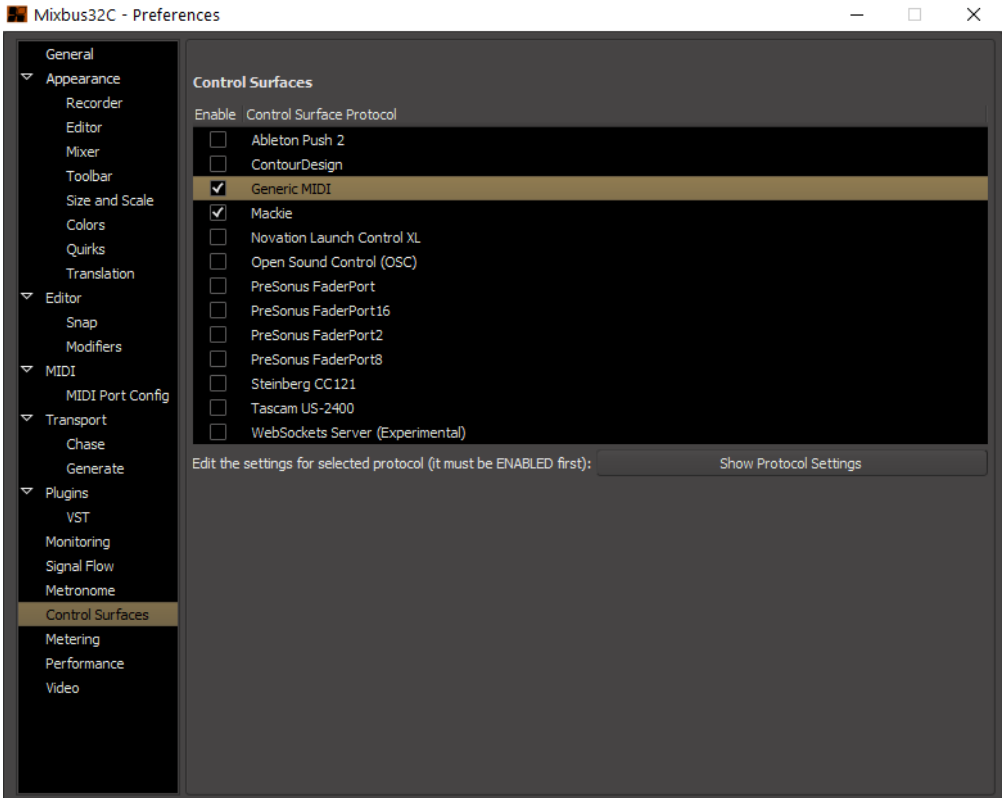
## Step 3:

- Open Mixbus 32C
- Click on **Edit->Preferences**



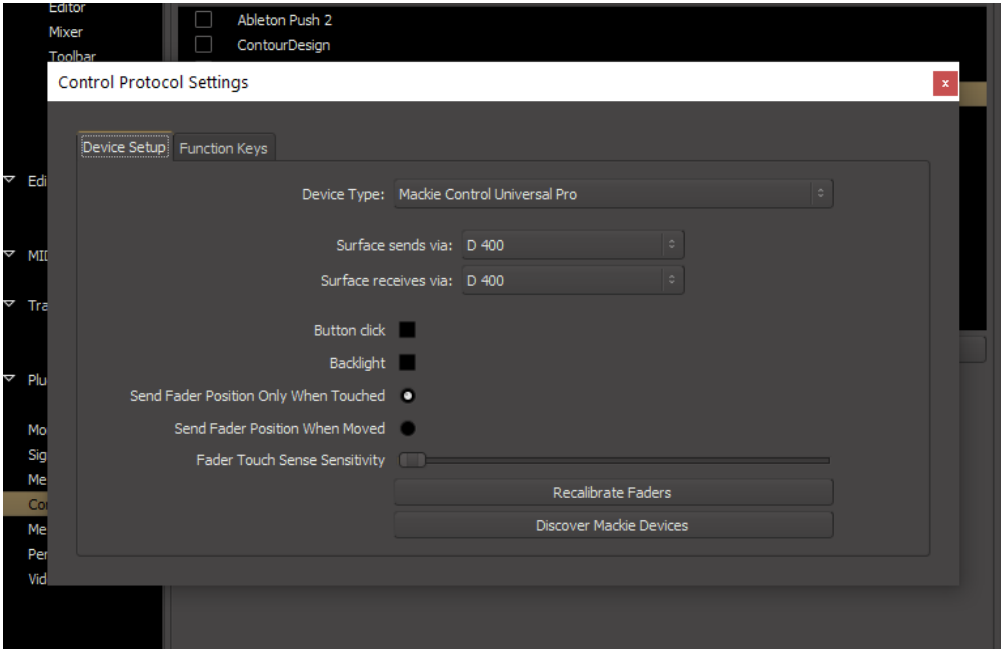
## Step 4:

- Go to **Control Surfaces**
- Check **Generic MIDI** and **Mackie**



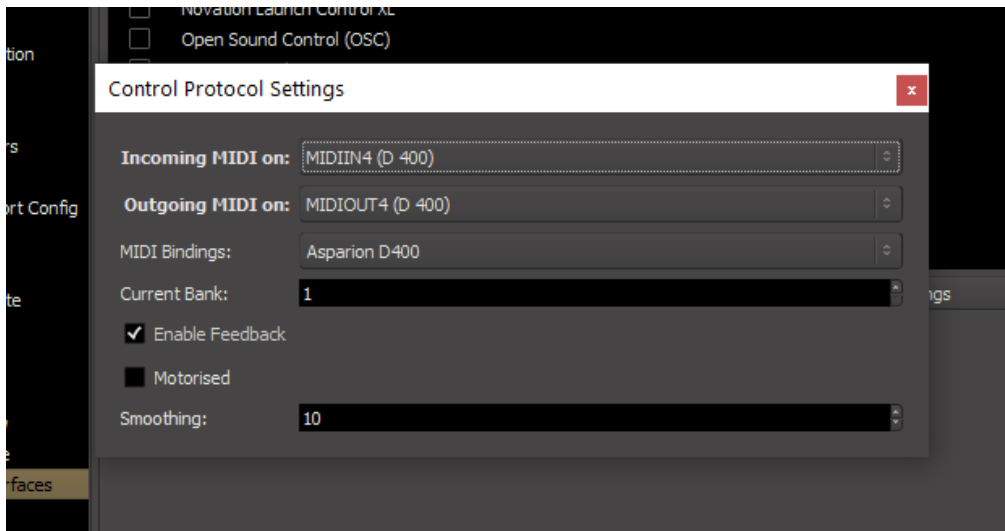
## Step 5:

- Click **Show Protocol Settings on Mackie**
- Select **D400** as shown below



## Step 6:

- Activate one more Extension than you actually want to use  
*How you can do that is described in the main manual.*
- Click **Show Protocol Settings** on **Generic MIDI**
- Choose the device with the name **D400** and the highest number as shown below
- Select **MIDI Bindings: Asparion D400**
- Check **Enable Feedback**



## Step 7: (optional)

Factory mapping:

Ring 1 to 8	Mixbus Gain 1 to 8
Assignable 1	Show Editor
Assignable 2	Show Mixer
Shift	Add Track
Magic *	Save

- To change the mapping, you can edit the "Asparion\_D400.map" file with your favorite text editor. A list of all available commands is attached inside the file  
*To activate changes, restart Mixbus 32C.*

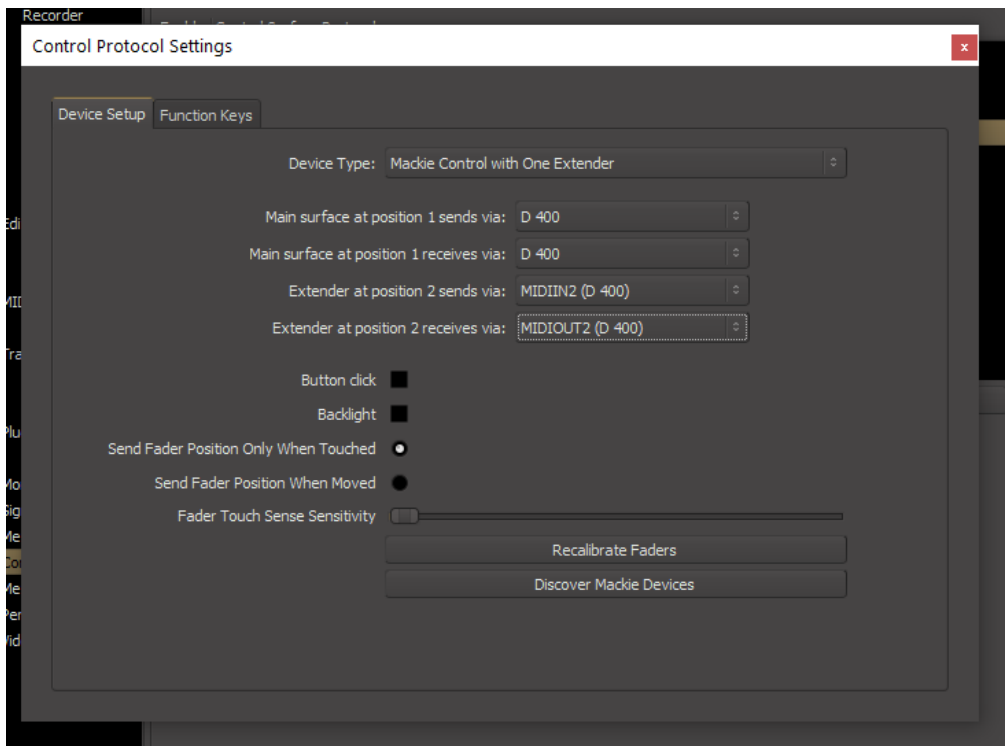
## Step 8: (optional)

- Mixbus 32C also contains a Midi-Learn-Function. To use it move the mouse over a control and press Ctrl + Middle mouse button and then operate the control element on the device

## Step 9: (optional)

- If you want to connect more than one extension, go to step 5 and select **Mackie Control with One Extender** (resp. Two Extenders) and select the appropriate Midi inputs as shown below

*If there is only one D400 showing up, you need to enable the extensions first. How you can do that is described in the main manual.*







For more information  
visit [www.asparion.de](http://www.asparion.de)