



LV1

D400

D400^T

D400^F

LV1

This guide shows you how to set up the D400 in LV1. All pictures provided were taken with LV1 10 but it is also applicable to most other LV1 versions.

All files mentioned in this guide can be found on the USB drive, in the Asparion Configurator installation folder or on our website.

If you are having trouble with anything in this guide, please contact us via our website www.asparion.de/contact and we'll immediately help you.

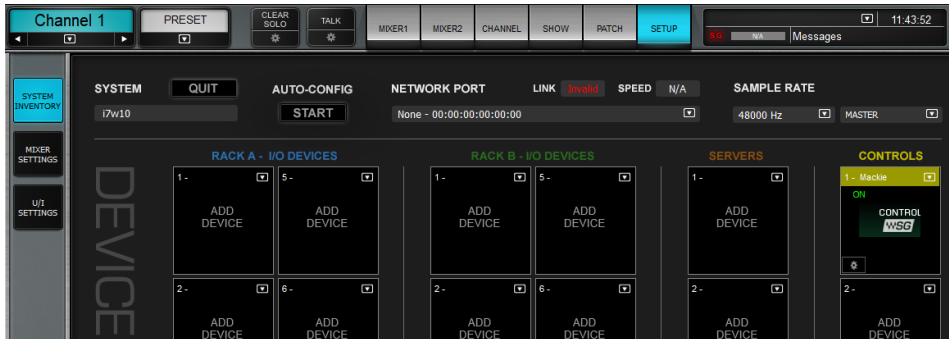
Step 1:

- **Select the LV1 preset**

How to select a preset is described in the main manual.

Step 2:

- Open LV1
- Click on **SETUP->SYSTEM INVENTORY**
- Add a **Mackie** to **CONTROLS**



Step 3:

- Go to **Settings** and select **D400**

The screenshot shows the 'MACKIE CONTROL SURFACE OPTIONS' menu. It is divided into several sections:

- MIDI Ports:** A table with columns for 'Main', 'Input Port', and 'Output Port'.

MIDI Ports	Main	Input Port	Output Port
Device 1	<input checked="" type="checkbox"/>	D 400	D 400
Device 2	<input type="checkbox"/>	None	None
- Faders:** A dropdown menu set to 'Mixer 1' and a checkbox for 'Follow Aux-Sends Flip'.
- Master 1:** A dropdown menu set to 'LR' and a checkbox for 'Follow Aux-Master Flip'.
- GLOBAL:** Three checkboxes: 'Mute Groups to Function Select 1-8' (checked), 'User Assignable Keys to Global View Controls' (checked), and 'Jog Wheel Adjust Selected Controls' (checked).

Step 4: (optional)

- If you want to connect more than one extension, select **D400** also as **Device 2**
If there is only one D400 showing up, you need to enable the extensions first. How you can do that is described in the main manual.

MACKIE CONTROL SURFACE OPTIONS

MIDI Ports	Main	Input Port	Output Port	
Device 1	<input checked="" type="checkbox"/>	D 400	D 400	
Device 2	<input type="checkbox"/>	MIDIIN2 (D 400)	MIDIOUT2 (D 400)	

Faders

Mixer 1

Follow Aux-Sends Flip

Master 1

LR

Follow Aux-Master Flip

GLOBAL

Mute Groups to Function Select 1-8

User Assignable Keys to Global View Controls

Jog Wheel Adjust Selected Controls



For more information
visit www.asparion.de