



Cubase

D400

D400^T

D400^F

Cubase

This guide shows you how to set up the D400 in Cubase. All pictures provided were taken with Cubase 7 but it is also applicable to most other Cubase versions.

All files mentioned in this guide can be found on the USB drive, in the Asparion Configurator installation folder or on our website.

If you are having trouble with anything in this guide, please contact us via our website www.asparion.de/contact and we'll immediately help you.

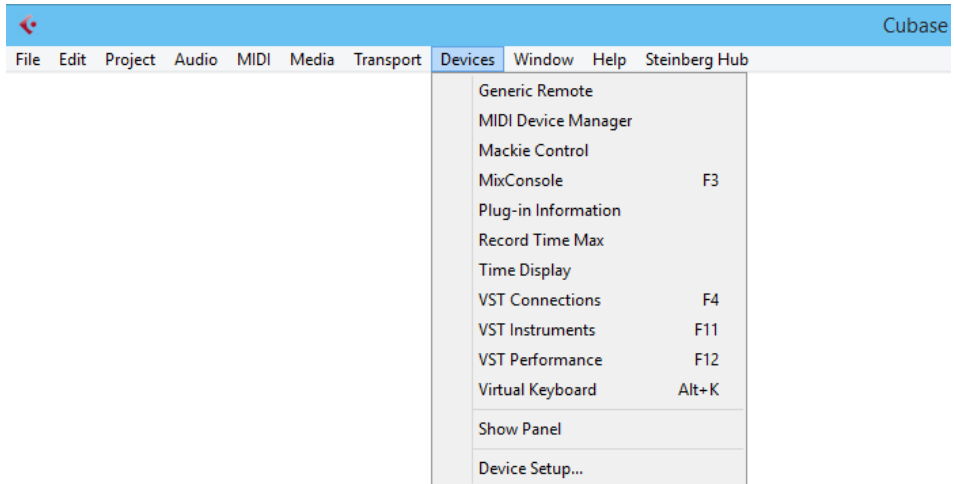
Step 1:

- **Select the Cubase preset**

How to select a preset is described in the main manual.

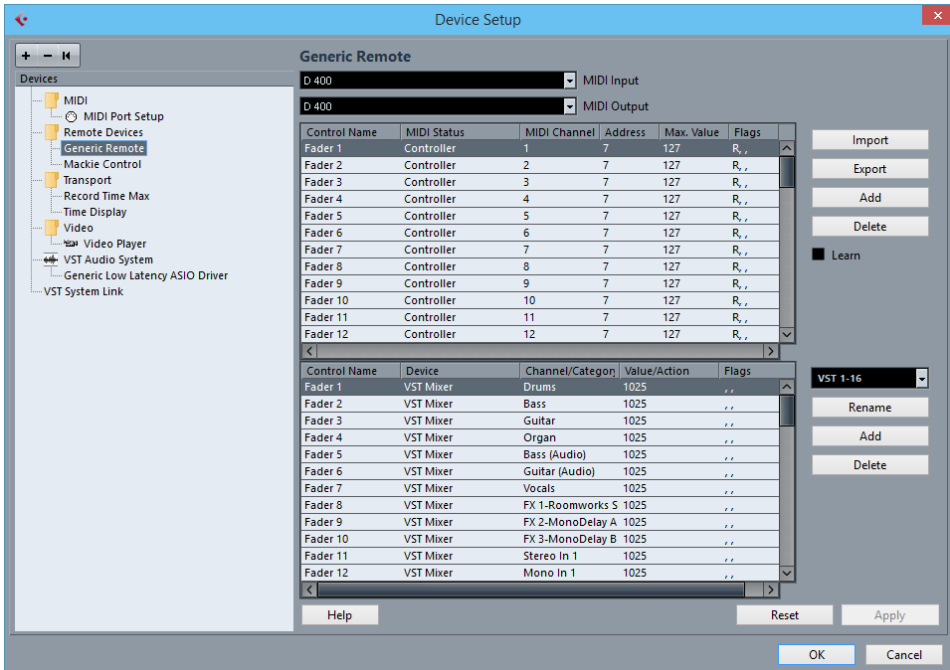
Step 2:

- Open Cubase
- Click on **Devices->Device Setup...**



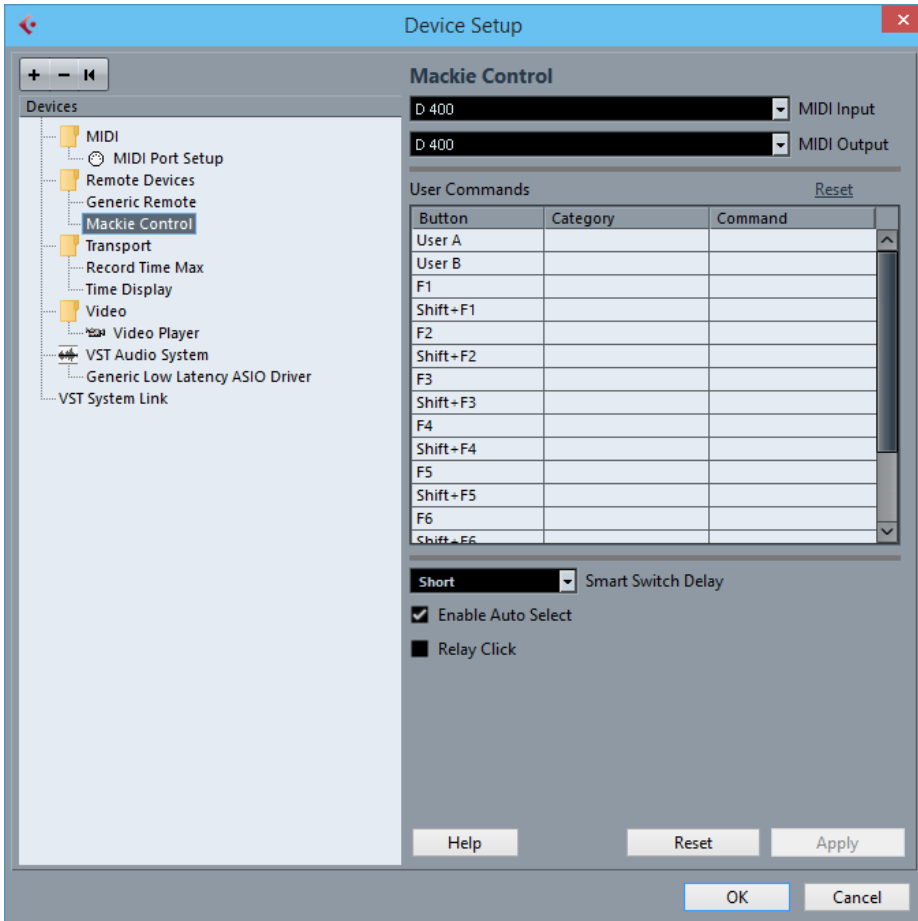
Step 3:

- Press the **+** sign and add **Generic Remote**
- Select **D400** as **MIDI Input** and as **MIDI Output**
- Press **Import** and select the file **CubaseGenericPresetD400.xml**



Step 4:

- Press the **+** sign and add **Mackie Control**
- Select **D400** as MIDI Input and as MIDI Output



Step 5: (optional)

- If you want to connect more than one extension, you should redo step 4 but select **D400 (2)** as **MIDI Input** and as **MIDI Output**
If there is only one D400 showing up, you need to enable the extensions first. How you can do that is described in the main manual.



For more information
visit www.asparion.de