



Cubase - Advanced Preset

D400

D400^T

D400^F

Cubase - Advanced Preset

This guide shows you how to set up the D400 in Cubase.

This preset is optimized for a current version of **Cubase** with **activated Control Room**. The volume encoder doesn't control the fader of the main stereo track, but the volume of the control room.

It provides the following key assignments for the **Aspation D400T transport unit**:

Control element	Configuration
EQ X „click“	EQ band X on
EQ X „rotate“	Change frequency of EQ band X
EQ X „click + rotate“	Change gain of EQ band X
EQ X „shift + rotate“	Change EQ type
Volume „rotate“	Control the Control Room volume
Volume „click“	Mute the Control Room
Volume „click + rotate“	Control the headphone volume
Volume „double click“	Mute the headphone
Pan „rotate“	Set the panorama of the selected track
North/South Encoder „rotate“	Quick Controls 1-8
Assignable 1 „click“	Open Drum Editor
Assignable 1 „double click“	Mixer: expand sends
Assignable 2 „click“	Open midi context editor
Assignable 2 „double click“	Mixer: expand inserts
Magic * „click“	Open Mixer 1
Magic * „double click“	Open Mixer 2
Cycle „click“	Cycle on/off
Metronome „click“	Metronome on/off
Back „click“	Rewind
Back „double click“	Go to the previous marker
Forward „click“	Forward
Forward „double click“	Go to the next marker
Bank Up „click“	Fader bank back
Bank Up „double click“	Fader bank back by one track
Bank Down „click“	Fader bank forward
Bank Down „double click“	Fader bank forward by one track
Sustain Pedal	Start record

All pictures provided were taken with Cubase 8.5 but it is also applicable to most other Cubase versions.

All files mentioned in this guide can be found on the USB drive, in the Asparion Configurator installation folder or on our website.

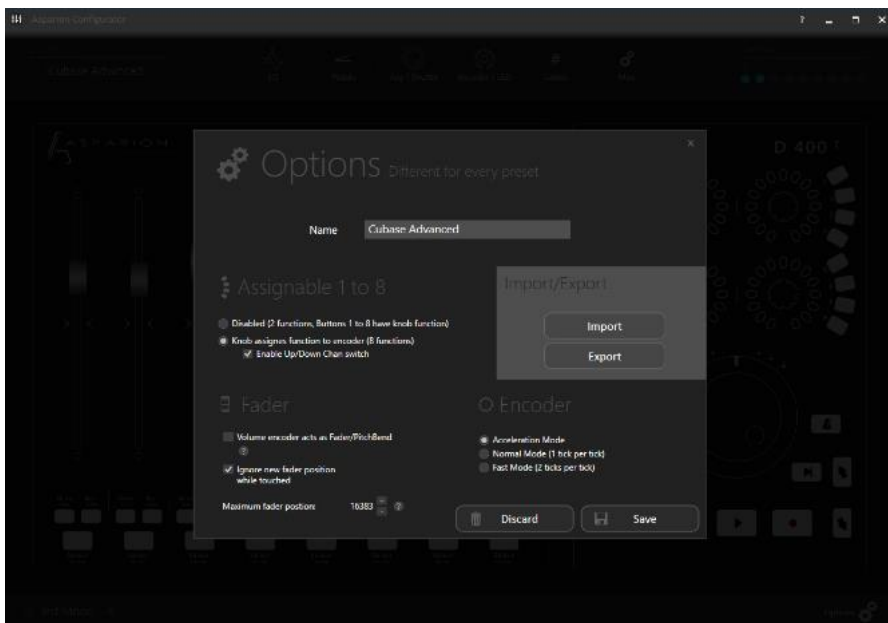
If you are having trouble with anything in this guide, please contact us via our website www.asparion.de/contact and we'll immediately help you.

Step 1:

- Open **Asparion Configurator**
- Select a preset as "active preset" which you want to overwrite
- Click on **Misc->Import** and import the preset file **Cubase Advanced.aPres**

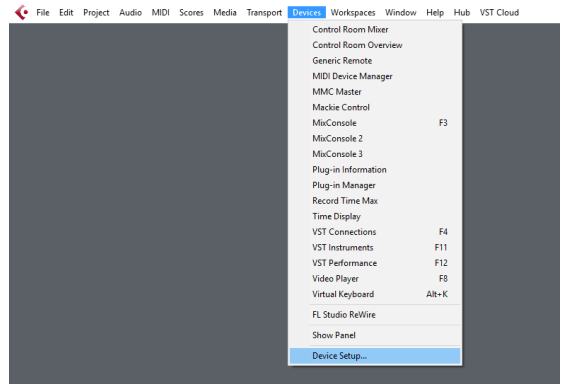
How to select a preset is described in the main manual.

This preset contains minor changes to expand the functionality of the standard Cubase preset.



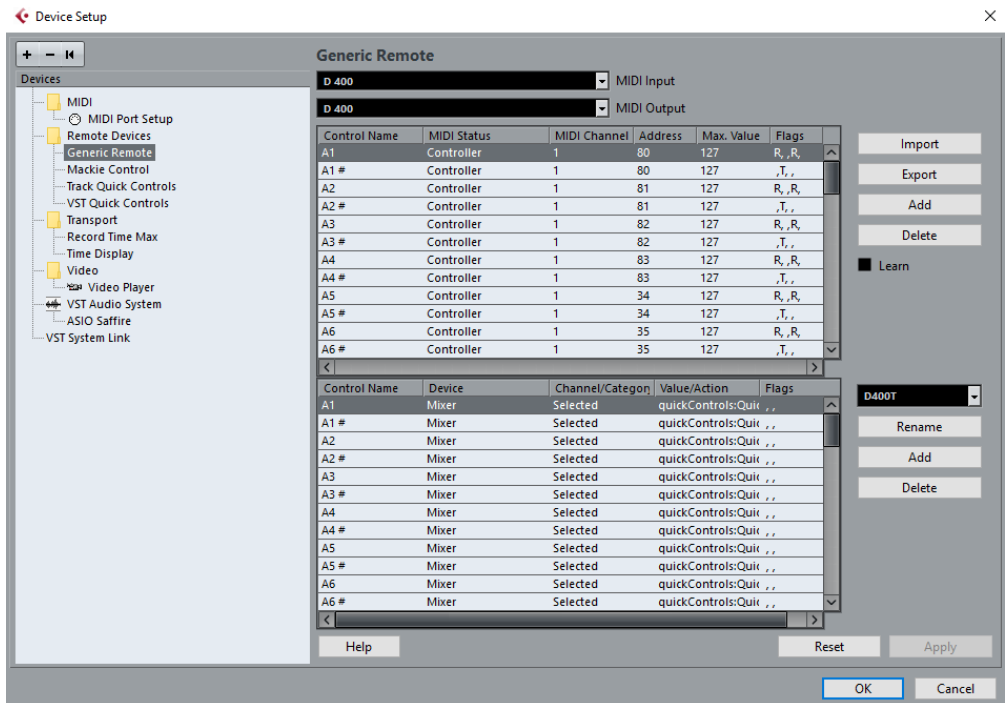
Step 2:

- Open **Cubase**
- Click on **Devices->Device Setup...**



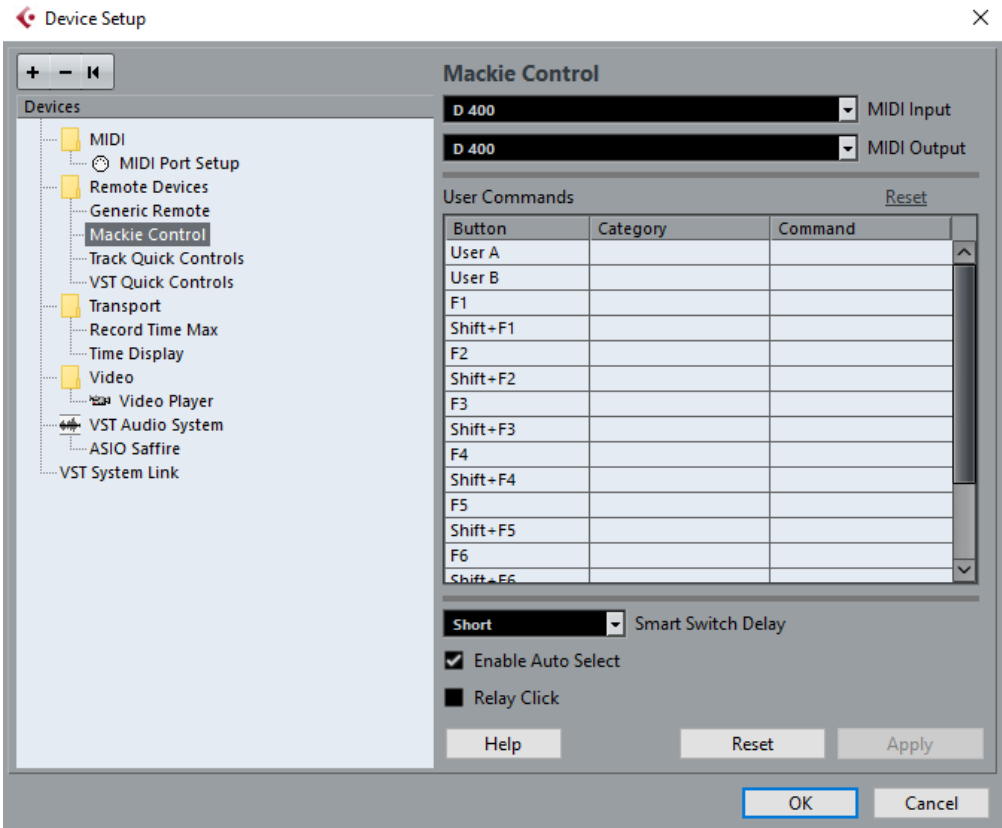
Step 3:

- Press the **+** sign and add **Generic Remote**
- Select **D400** as **MIDI Input** and as **MIDI Output**
- Press **Import** and select the file **CubaseAdvancedPreset.xml**



Step 4:

- Press the **+** sign and add **Mackie Control**
- Select **D400** as MIDI Input and as MIDI Output



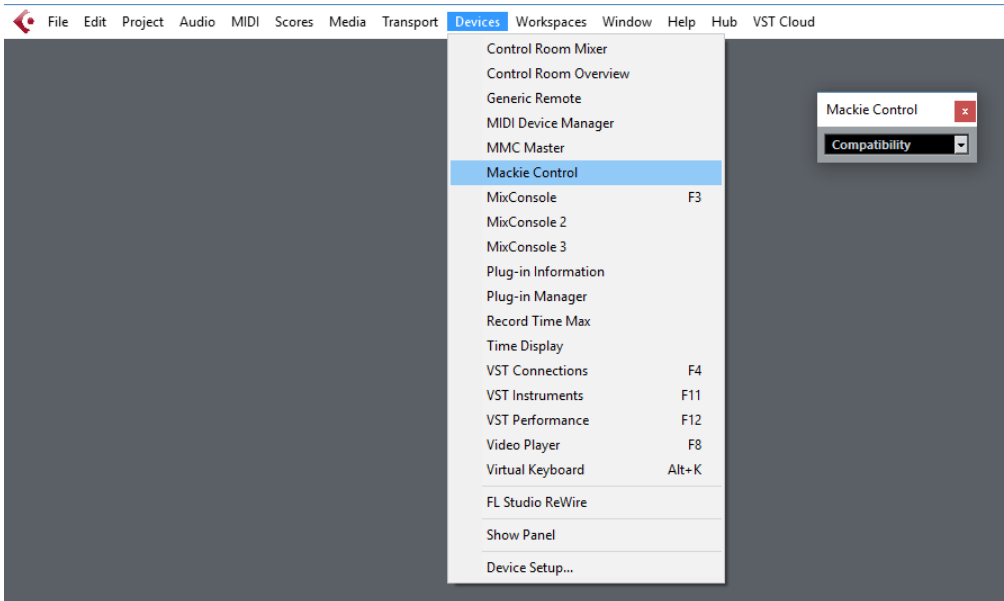
Step 5: (optional)

- If you want to connect more than one extension, you should redo step 4 but select **D400 (2)** as MIDI Input and as MIDI Output

If there is only one D400 showing up, you need to enable the extensions first. How you can do that is described in the main manual.

FAQ – increment fader bank does not work properly

- So that the buttons „fader bank up and down“ work properly with Cubase 8.5 „Devices -> Mackie Control“ „**Compatibility**“ must be selected. Otherwise the track wise switching of the controller bank with double click doesn't work.



FAQ – VST instruments play sounds unwanted

- If there are problem with midi or instrument tracks that play sounds unwanted by a VST instrument while using the Asparion Controller deactivate the “in ‘ALL MIDI’” checkbox for D400.
- Alternatively the midi inputs on all instruments/midi tracks have to be set specifically to, for example, your master keyboard.

Device Setup

MIDI Port Setup

Device	I/O	Port System Name	Show As	Visible	State	In 'All MIDI'
DirectMusic	In	Pro40 MIDI	Pro40 MIDI	<input checked="" type="checkbox"/>	Active	<input checked="" type="checkbox"/>
DirectMusic	Out	Pro40 MIDI	Pro40 MIDI	<input checked="" type="checkbox"/>	Inactive	
Windows MIDI	In	D 400	D 400	<input checked="" type="checkbox"/>	Active	<input type="checkbox"/>
Windows MIDI	In	MIDIIN2 (D 400)	MIDIIN2 (D 400)	<input checked="" type="checkbox"/>	Active	<input checked="" type="checkbox"/>
Windows MIDI	In	USB Keystation 88es	USB Keystation 88es	<input checked="" type="checkbox"/>	Active	<input checked="" type="checkbox"/>
Windows MIDI	Out	D 400	D 400	<input checked="" type="checkbox"/>	Active	
Windows MIDI	Out	MIDIOUT2 (D 400)	MIDIOUT2 (D 400)	<input checked="" type="checkbox"/>	Inactive	
Windows MIDI	Out	Microsoft GS Wavetable Synth	Microsoft GS Wavetable Syn	<input checked="" type="checkbox"/>	Inactive	
Windows MIDI	Out	USB Keystation 88es	USB Keystation 88es	<input checked="" type="checkbox"/>	Inactive	

Use System Timestamp for 'Windows MIDI' Inputs
 Use System Timestamp for 'DirectMusic' Inputs

Help Reset Apply
 OK Cancel



For more information visit
www.asparion.de